

Application

The EAA-1245 airfoil blade acoustical louver provides low static pressure loss and reliable noise reduction over a wide range of frequencies. The EAA-1245 is available in a wide array of finishes including custom color matching and is ideally suited for intake or exhaust application on standby generator enclosures.

Standard Construction

Material: Mill finish 6063-T5 extruded aluminum.

Frame: 12" deep × 0.081" thick (305 × 2) channel.

Blades: 45° × 0.081" (2) thick airfoil type with a 26 ga. (0.55) thick perforated backing packed with noncombustible insulating material.

Screen: 1/2" × 0.063" (12.7 × 1.6) expanded and flattened aluminum.

Mullion: Visible.

Screen Frame: Removable.

Minimum Size: 12" × 36" (305 × 914)

Maximum Size: Single section: 60" × 120" (1524 × 3048)
Multiple section: Unlimited

Options

- Factory finish:
 - High Performance Fluoropolymer - 100% resin Newlar®/ 70% resin Kynar®
 - Baked Enamel
 - Clear or Color Anodized, Class 1
 - Prime Coat
- 1 1/2" (38) flange frame.
- Welded construction.
- Alternate bird or insect screens.
- Alternate removable one-piece U-channel screen frame.
- Insulated or non-insulated blank-off panels.
- Filter racks.
- Hinged frame.
- Head and/or sill flashing.

Ratings

Free Area: [48" × 48" (1219 × 1219) unit]: 4.2 ft² (0.39 m²)
26.3%

Performance @ Beginning Point of Water Penetration

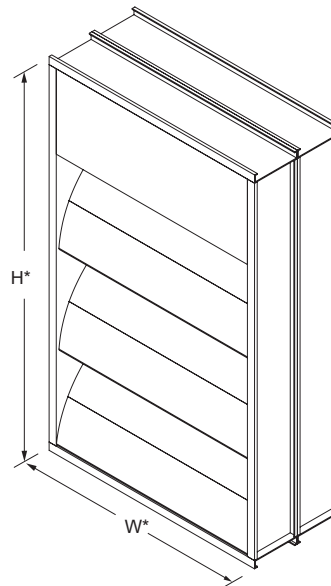
Free Area Velocity: 999 fpm (5.08 m/s)
Air Volume Delivered: 4,196 cfm (1.98 m³/s)
Pressure Loss: 0.09 in.wg. (22 Pa)

Velocity @ 0.15 in.wg. Pressure Loss: 1,300 fpm (6.60 m/s)

Design Load: 30 psf

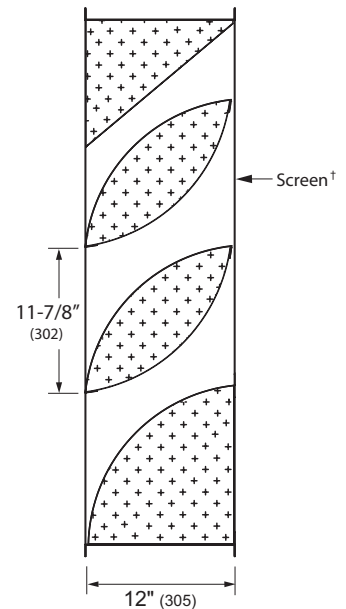
Acoustical Performance:

Octave Band	2	3	4	5	6	7
Center Freq. (hz)	125	250	500	1000	2000	4000
Transmission Loss	7	8	11	13	12	11
Noise Reduction	13	14	17	19	18	17



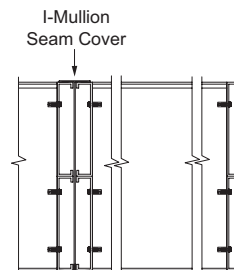
Model **EAA-1245**
(standard)

*Louvers dimensions furnished approximately 1/2" (13) undersize.

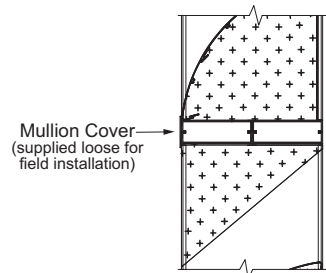


Vertical Section

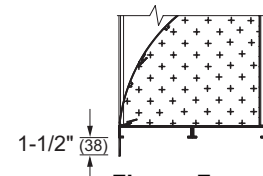
†Screen adds approximately 3/16" (5) to louver depth.



Vertical Mullion
(standard)



Horizontal Mullion
(standard)



Flange Frame
(optional)

