

Application

The Continuous grille is ideally suited for architectural accents, facades, screening, and security barriers and is designed for both interior and external installations. The Continuous grille is available in a wide array of finishes including custom color matching.

Standard Construction

Material: 6063-T5 extruded aluminum.

Frame: 0.125" (3.175) thick.

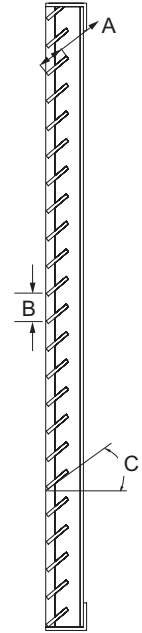
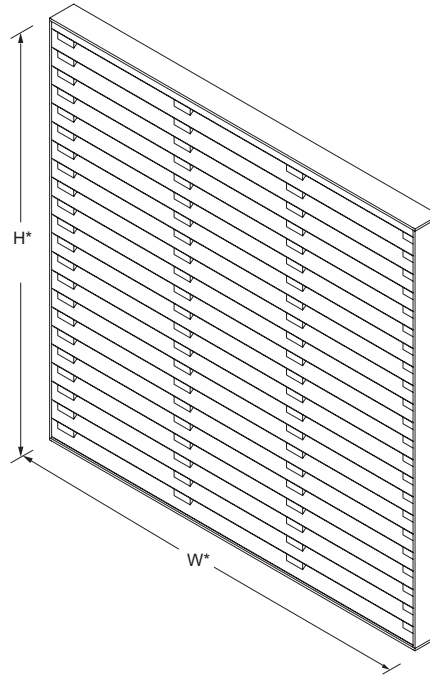
Stiffener: 0.125" (3.175) thick.

Minimum Size: 12" × 12" (305 × 305).

Maximum Size: Single section: 60" × 180" (1524 × 4572)
One Dimension must be 60" (1524) or less.

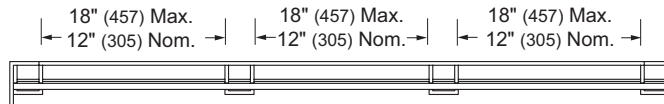
Options

- Factory finish:
 - High Performance Fluoropolymer - 100% resin Newlar®/70% resin Kynar®
 - Baked Enamel
 - Clear Anodize
 - Integral Color Anodize
 - Prime Coat
- Alternate Frame:
 - Flanged
 - Glazing

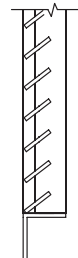


Model **CONTINUOUS**
(standard)
*Grille dimensions furnished approximately 1/2" (13) undersize.

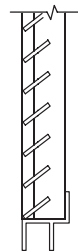
Vertical Section



Horizontal Section



Flanged Frame
(optional)



Glazing Frame
(optional)

Dimension	Description
A _____ inches	Blade Depth - Minimum 1" (25), Maximum 2 1/2" (64)
B _____ inches	Blade Spacing - Minimum 1/2" (13)
C _____ inches	Degree of Blade Slope - Maximum 45° Minimum 0°

The illustrated design for this Continuous Grille was created to a design load of 30 lbs per square foot. Changes may be required to accommodate other design loads.