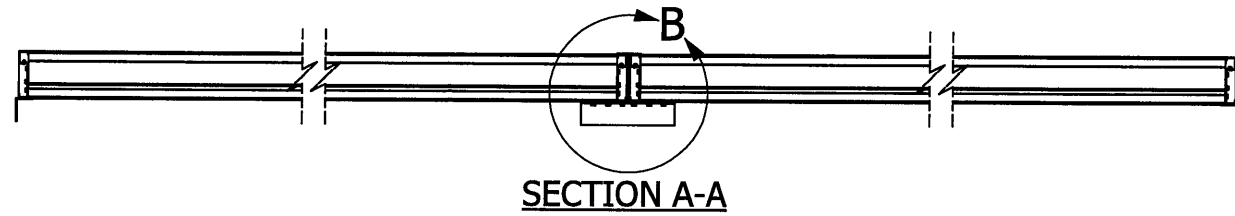
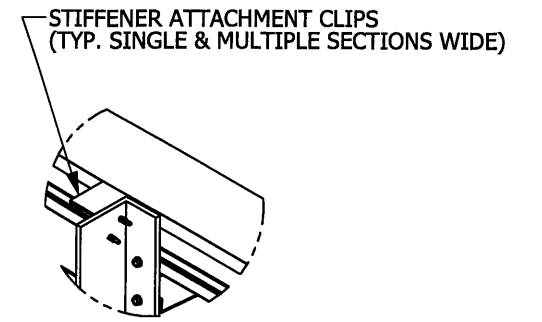
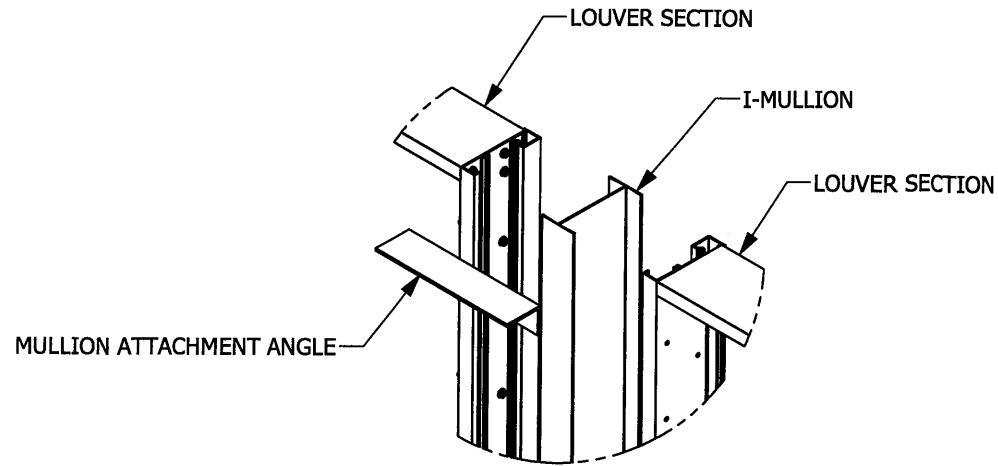
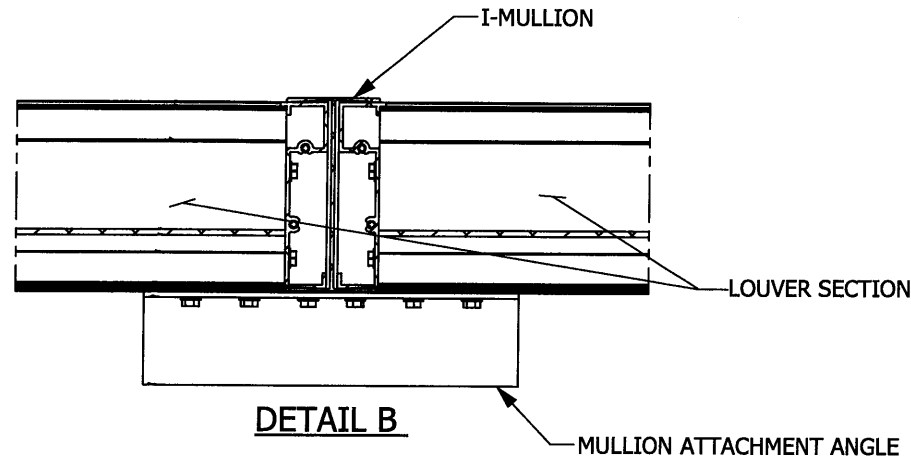


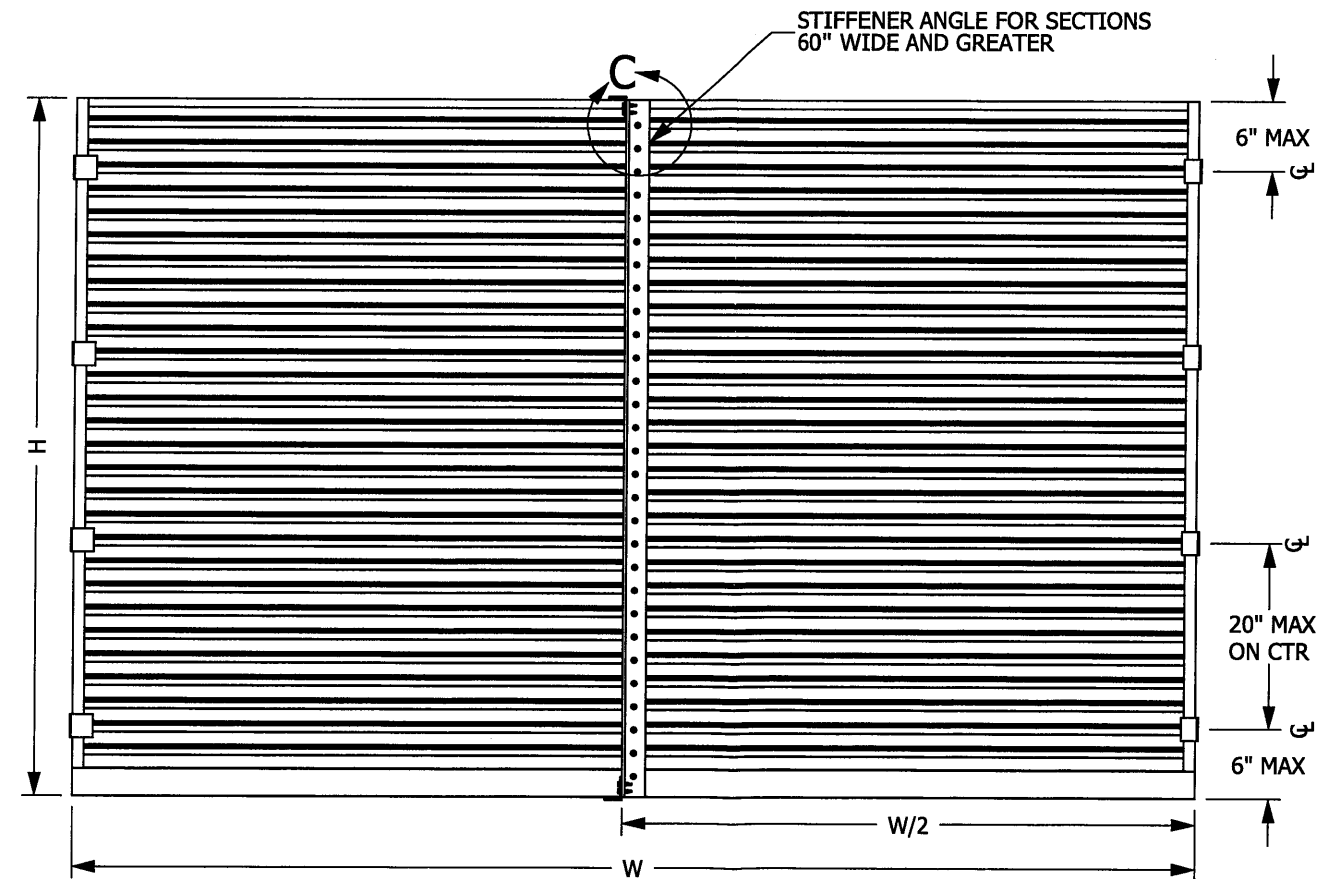
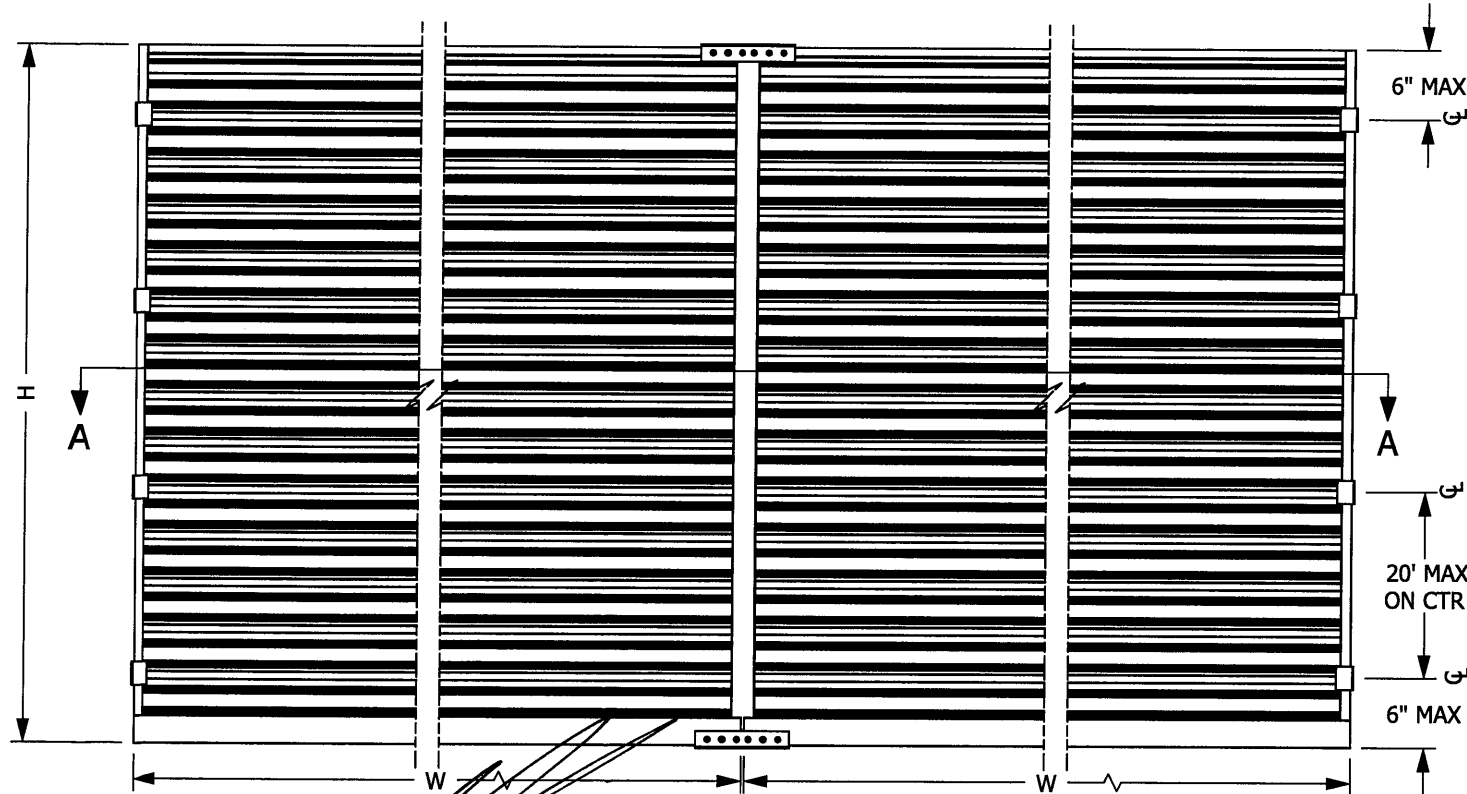
**RICE**  
**ENGINEERING**

105 School Creek Trail  
Luxemburg, WI 54217  
Phone: 920.845.1042  
Fax: 920.845.1048  
www.rice-inc.com

Florida Firm No: F-0100005061  
Certificate of Authorization: #9090  
L. David Rice  
Registration No: 50923

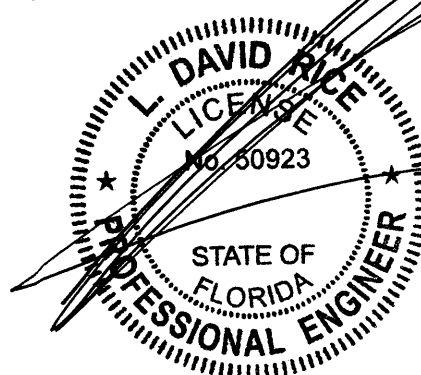


**DETAIL C**  
**STIFFENER CLIP ANGLE**



**MULTIPLE SECTION WIDE**  
**INTERIOR ELEVATION**  
**CLIP PLACEMENT**

**SINGLE SECTION WIDE, INTERIOR ELEVATION**  
**CLIP PLACEMENT**



APR 09 2010

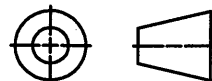
UNLESS OTHERWISE SPECIFIED  
DIMENSION ARE IN INCHES.

TOLERANCE UNLESS NOTED:  
X.X ±0.030  
X.XX ±0.015  
X.XXX ±0.010  
ANGLE ±1°  
FRACTION ±1/16

MAX HOLE BREAKOUT:  
15% OF MATERIAL THICKNESS

5101 Blue Mound Road  
Fort Worth, Texas 76106  
Phone: 817-509-2300  
Fax: 817-831-3110

THIRD ANGLE PROJECTION



**ALL-LITE**  
**ARCHITECTURAL PRODUCTS**

THIS DRAWING AND THE DESIGN REPRESENTED ARE THE CONFIDENTIAL AND PROPRIETARY PROPERTY OF PCI INDUSTRIES AND MAY NOT BE DISCLOSED, LOANED, COPIED, OR USED FOR ANY PURPOSE OTHER THAN DESIGN REVIEW AND APPROVAL WITHOUT THE EXPRESS WRITTEN CONSENT OF PCI INDUSTRIES.

DRAWING DESCR: ATTACHMENT ELEVATION & DETAILS

PROJECT: FLORIDA BUILDING CODE LOUVERS

LOCATION:

CUSTOMER:

PROJ. MGR:

DATE: 11/24/2009

SHEET: 1 of 6

CHK'D BY:

SCALE: NTS

DRAWN BY: TB

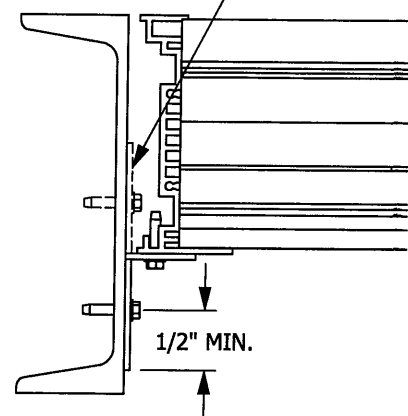
ORDER NUMBER

P.O. NUMBER

DRAWING NUMBER

ATTACHMENT

REVERSE ATTACHMENT OPTION



#10-24 x 3/4" SST TEK SCREW PROVIDED BY OTHERS

15/16" MAX

#10-24 x 3/4" SST TEK SCREW PROVIDED BY POTTORFF

2" x 1 1/2" x 1/8" x 2" L ALUMINUM ANGLE

2" x 1 1/2" x 1/8" x 2" L ALUMINUM ANGLE

1/2" MIN.

#10-24 x 3/4" SST TEK SCREW PROVIDED BY POTTORFF

#10-24 x 3/4" SST TEK SCREW PROVIDED BY OTHERS

**JAMB ATTACHMENT DETAILS  
STEEL CONDITION**

**STIFFENER ATTACHMENT DETAILS  
STEEL CONDITION**

**RICE  
ENGINEERING**

105 School Creek Trail  
Luxemburg, WI 54217  
Phone: 920.845.1042  
Fax: 920.845.1048  
www.rice-inc.com

Florida Firm No: F-01000005061  
Certificate of Authorization: #9090  
L. David Rice  
Registration No: 50923

#10-24 x 3/4" SST TEK SCREW PROVIDED BY POTTORFF

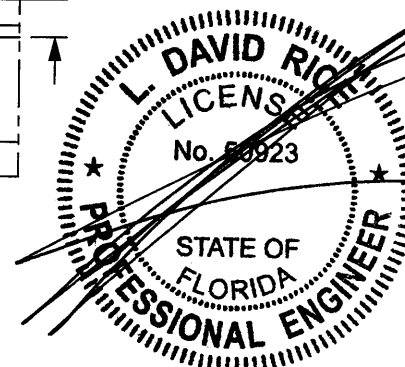
2" x 1 1/2" x 1/8" x 8" L ALUMINUM ANGLE

#10-24 x 3/4" SST TEK SCREW PROVIDED BY OTHERS

1/2" MIN.

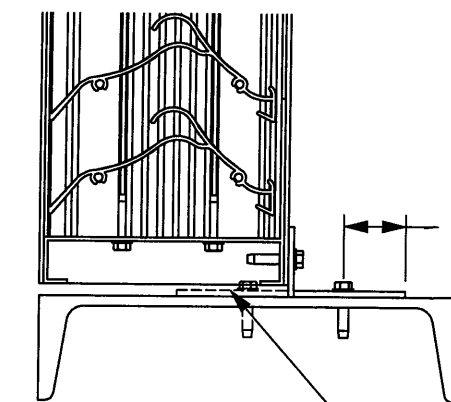
3/4" MAX

APR 09 2010



**INSTALLATION NOTES:**

- 1) DRAWING INCLUDES INSTALLATION DETAILS TO ATTAIN MAXIMUM DESIGN PRESSURES FOR LOUVER PER CHARTS ON DRAWING 6
- 2) IT IS ASSUMED THAT THE LOUVER SYSTEMS DO NOT SUPPORT ANY LOADS TRANSFERRED FROM THE BUILDING.
- 3) IT IS ASSUMED THAT THE BUILDING CONDITIONS ARE ADEQUATELY DESIGNED TO SUPPORT LOADS IMPARTED BY THE LOUVER SYSTEM.
- 4) INSTALLER TO PROVIDE GASKET MATERIAL BETWEEN DISSIMILAR MATERIALS IN ORDER TO PROTECT FROM CORROSION.
- 5) CRITICAL EQUIPMENT TO BE PROTECTED FROM MOISTURE INGRESS.
- 6) OTHER BUILDING CONDITIONS THAN THOSE DENOTED CAN BE UTILIZED IF ANALYZED AND APPROVED BY A PROFESSIONAL ENGINEER.
- 7) MULTI-SECTION WIDE AND HIGH LOUVER SYSTEMS ARE ALLOWABLE PROVIDED THE INDIVIDUAL SECTIONS ARE SUPPORTED PER THE DETAIL ON THIS DRAWING AND A SUITABLE STRUCTURE IS ANALYZED AND APPROVED BY A PROFESSIONAL ENGINEER.
- 8) ALL STEEL SUBSTRATE SHALL BE 18 GA STUD EQUIVALENT OR STRONGER.



REVERSE ATTACHMENT OPTION

**MULLION ATTACHMENT DETAILS  
STEEL CONDITION**

Tom\LOUVERS\Florida Building Code Louvers

Cadsvr1r

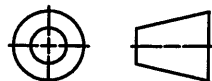
UNLESS OTHERWISE SPECIFIED DIMENSION ARE IN INCHES.

TOLERANCE UNLESS NOTED:  
X.X ±0.030  
X.XX ±0.015  
X.XXX ±0.010  
ANGLE ±1°  
FRACTION ±1/16

MAX HOLE BREAKOUT:  
15% OF MATERIAL THICKNESS

5101 Blue Mound Road  
Fort Worth, Texas 76106  
Phone: 817-509-2300  
Fax: 817-831-3110

THIRD ANGLE PROJECTION



**ALL-LITE  
ARCHITECTURAL PRODUCTS**

THIS DRAWING AND THE DESIGN REPRESENTED ARE THE CONFIDENTIAL AND PROPRIETARY PROPERTY OF PCI INDUSTRIES AND MAY NOT BE DISCLOSED, LOANED, COPIED, OR USED FOR ANY PURPOSE OTHER THAN DESIGN REVIEW AND APPROVAL WITHOUT THE EXPRESS WRITTEN CONSENT OF PCI INDUSTRIES.

DRAWING DESCR: STEEL ATTACHMENT DETAILS

PROJECT: FLORIDA BUILDING CODE LOUVERS

LOCATION:

CUSTOMER:

PROJ. MGR:

DRAWN BY: TB

DATE: 11/24/2009

CHK'D BY:

ORDER NUMBER

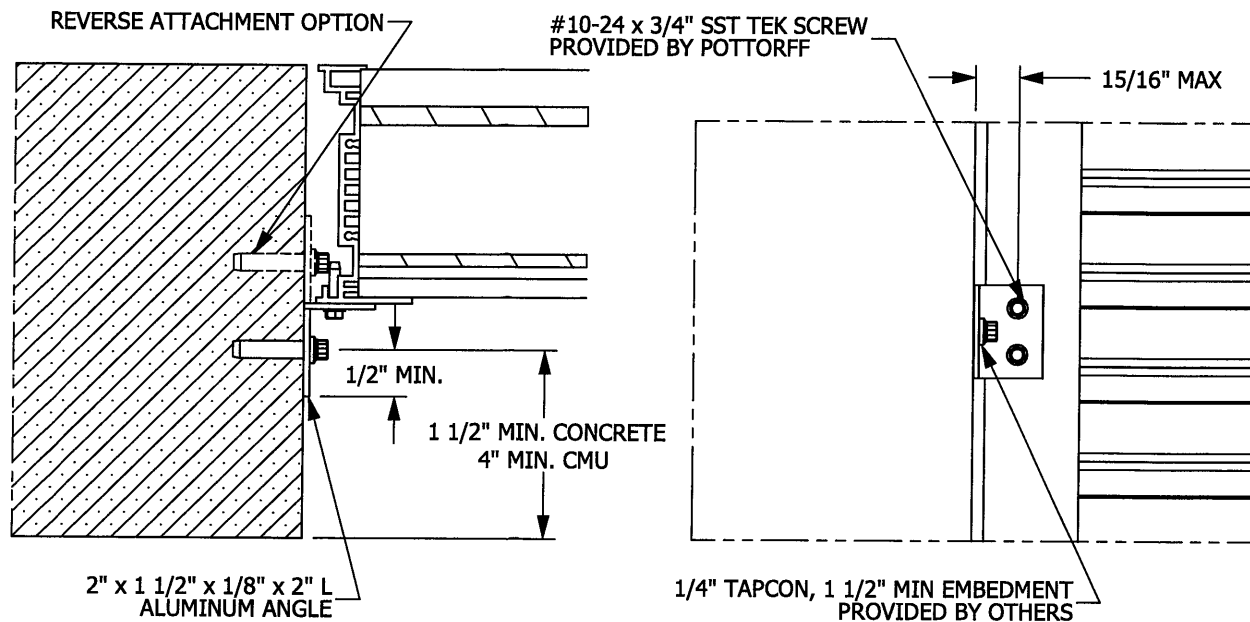
P.O. NUMBER

DRAWING NUMBER

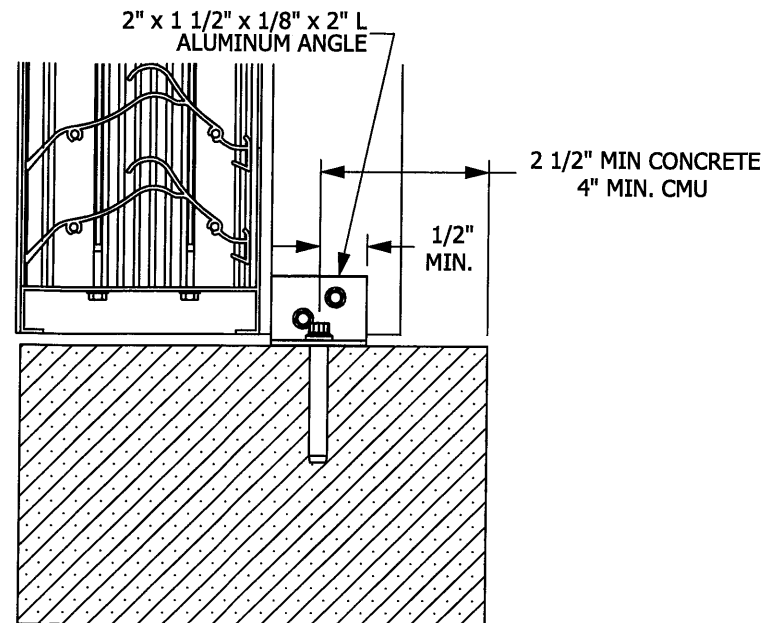
SHEET: 2 of 6

SCALE: NTS

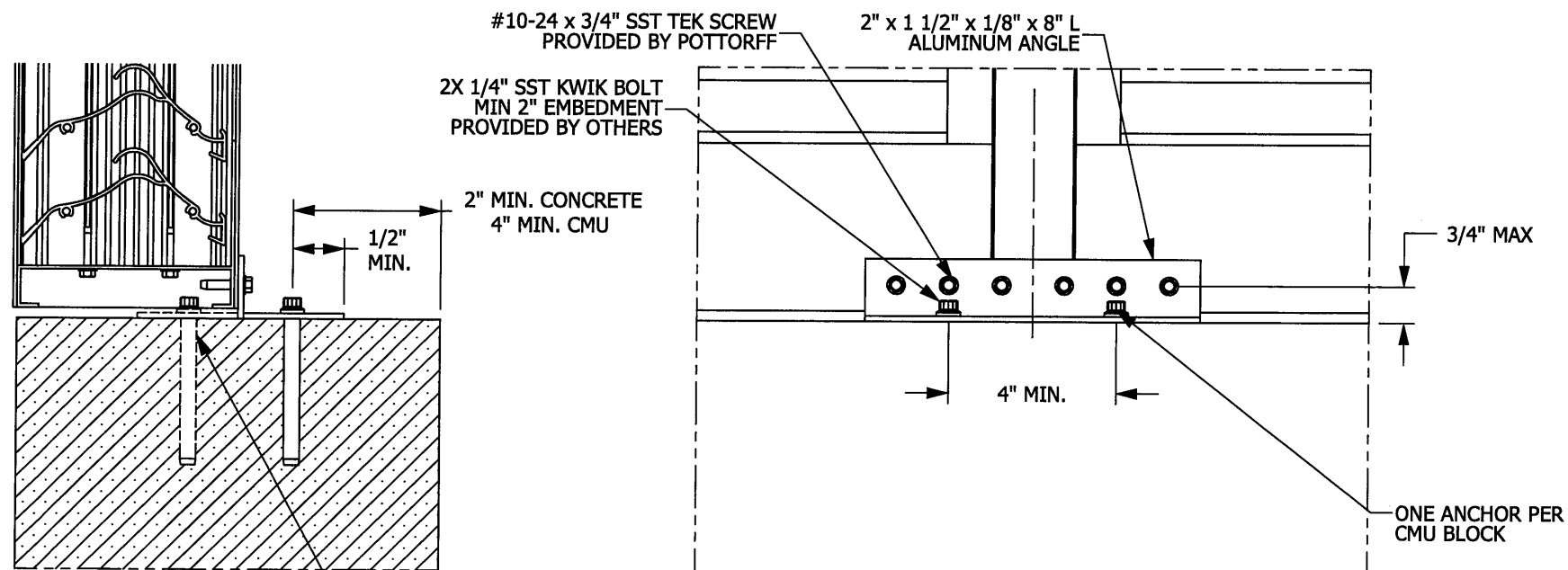
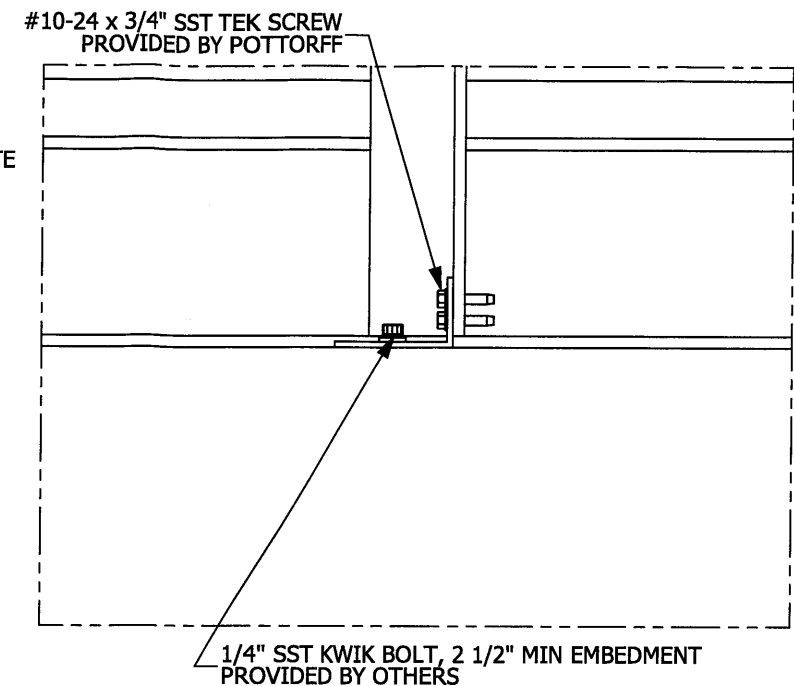
STEEL CONDITION



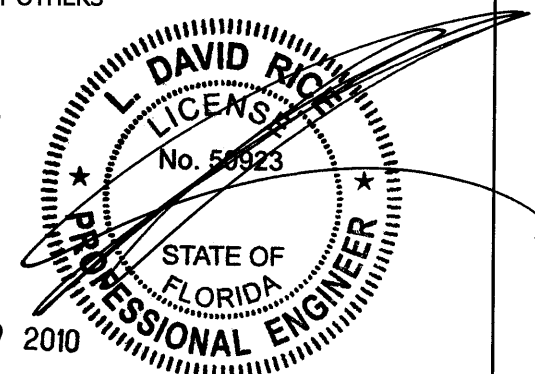
**JAMB ATTACHMENT DETAIL  
MASONRY CONDITION (SHEAR CONNECTION)**



**STIFFENER ATTACHMENT DETAIL  
MASONRY CONDITION (SHEAR CONNECTION)**



**MULLION ATTACHMENT DETAIL  
MASONRY CONDITION (SHEAR CONNECTION)**



- INSTALLATION NOTES:
- 1) DRAWING INCLUDES INSTALLATION DETAILS TO ATTAIN MAXIMUM DESIGN PRESSURES FOR LOUVER PER CHARTS ON DRAWING 6
  - 2) IT IS ASSUMED THAT THE LOUVER SYSTEMS DO NOT SUPPORT ANY LOADS TRANSFERRED FROM THE BUILDING.
  - 3) IT IS ASSUMED THAT THE BUILDING CONDITIONS ARE ADEQUATELY DESIGNED TO SUPPORT LOADS IMPARTED BY THE LOUVER SYSTEM.
  - 4) INSTALLER TO PROVIDE GASKET MATERIAL BETWEEN DISSIMILAR MATERIALS IN ORDER TO PROTECT FROM CORROSION.
  - 5) CRITICAL EQUIPMENT TO BE PROTECTED FROM MOISTURE INGRESS.
  - 6) OTHER BUILDING CONDITIONS THAN THOSE DENOTED CAN BE UTILIZED IF ANALYZED AND APPROVED BY A PROFESSIONAL ENGINEER.
  - 7) MULTI-SECTION WIDE AND HIGH LOUVER SYSTEMS ARE ALLOWABLE PROVIDED THE INDIVIDUAL SECTIONS ARE SUPPORTED PER THE DETAIL ON THIS DRAWING AND A SUITABLE STRUCTURE IS ANALYZED AND APPROVED BY A PROFESSIONAL ENGINEER.
  - 8) ALL CONCRETE SUBSTRATE SHALL BE 2000 PSI OR STRONGER.
  - 9) ALL CMU SUBSTRATE SHALL BE ASTM C90 TYPE 2 FILLED WITH  $f_m=1500$  PSI GROUT

**RICE**  
**ENGINEERING**

105 School Creek Trail  
Luxemburg, WI 54217  
Phone: 920.845.1042  
Fax: 920.845.1048  
www.rice-inc.com

Florida Firm No: F-01000005061  
Certificate of Authorization: #9090  
L. David Rice  
Registration No: 50923

UNLESS OTHERWISE SPECIFIED DIMENSION ARE IN INCHES.

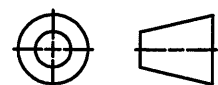
TOLERANCE UNLESS NOTED:

X.X	±0.030
X.XX	±0.015
X.XXX	±0.010
ANGLE	±1°
FRACTION	±1/16

MAX HOLE BREAKOUT:  
15% OF MATERIAL THICKNESS

5101 Blue Mound Road  
Fort Worth, Texas 76106  
Phone: 817-509-2300  
Fax: 817-831-3110

THIRD ANGLE PROJECTION



**ALL-LITE**

**ARCHITECTURAL PRODUCTS**

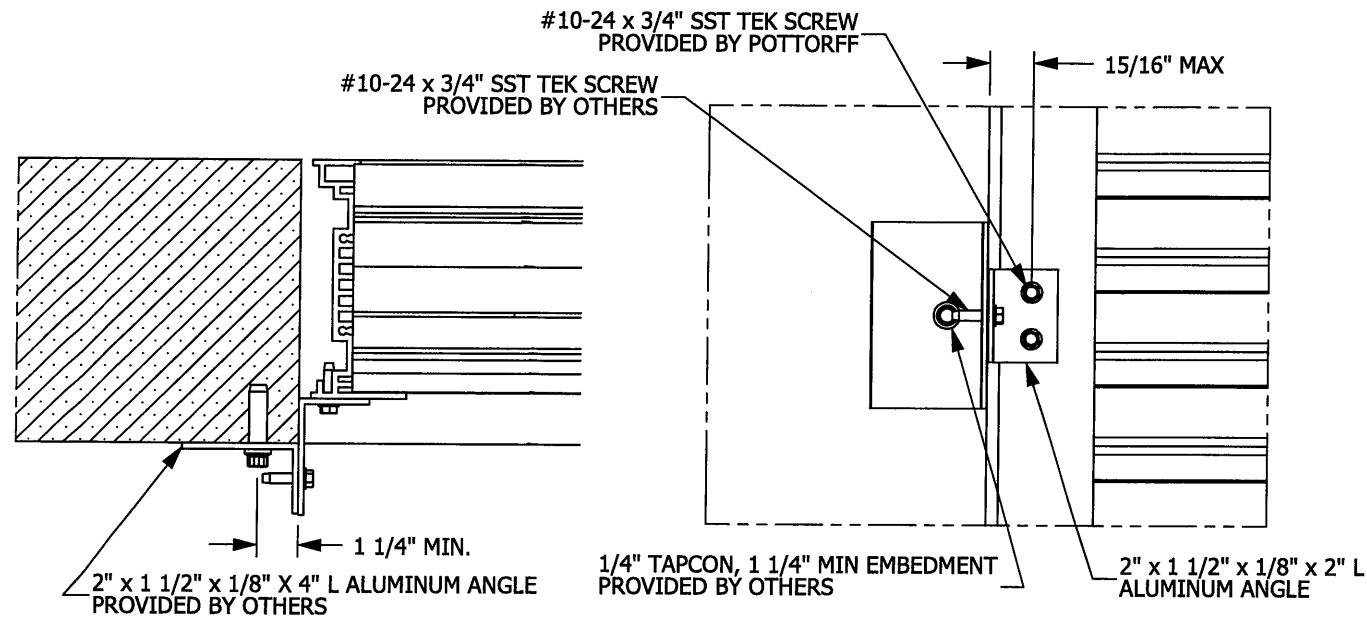
THIS DRAWING AND THE DESIGN REPRESENTED ARE THE CONFIDENTIAL AND PROPRIETARY PROPERTY OF PCI INDUSTRIES AND MAY NOT BE DISCLOSED, LOANED, COPIED, OR USED FOR ANY PURPOSE OTHER THAN DESIGN REVIEW AND APPROVAL WITHOUT THE EXPRESS WRITTEN CONSENT OF PCI INDUSTRIES.

DRAWING DESCR: MASONRY ATTACHMENT DETAILS			
PROJECT: FLORIDA BUILDING CODE LOUVERS			
LOCATION:			
CUSTOMER:			
PROJ. MGR:		DRAWN BY: TB	
DATE: 11/24/2009	CHK'D BY:	ORDER NUMBER	P.O. NUMBER
SHEET: 3 of 6	SCALE: NTS		DRAWING NUMBER MASONRY COND. (SHEAR)

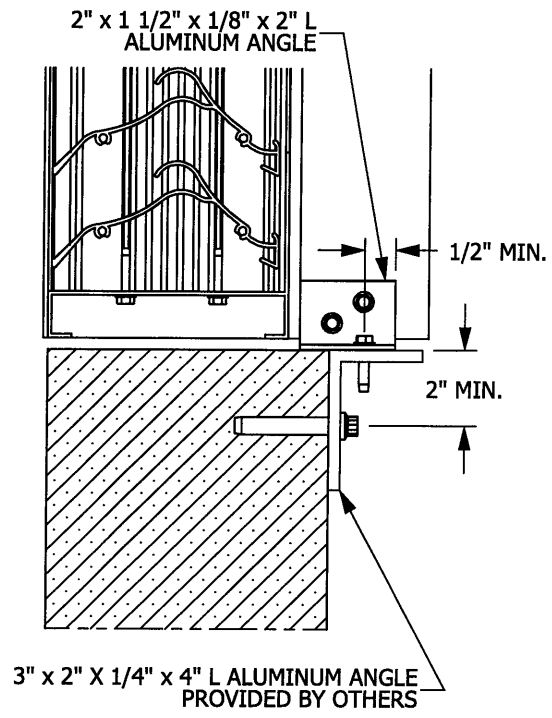
Tom\LOUVERS\Florida Building Code Louvers

Tom\LOUVERS\Florida Building Code Louvers\

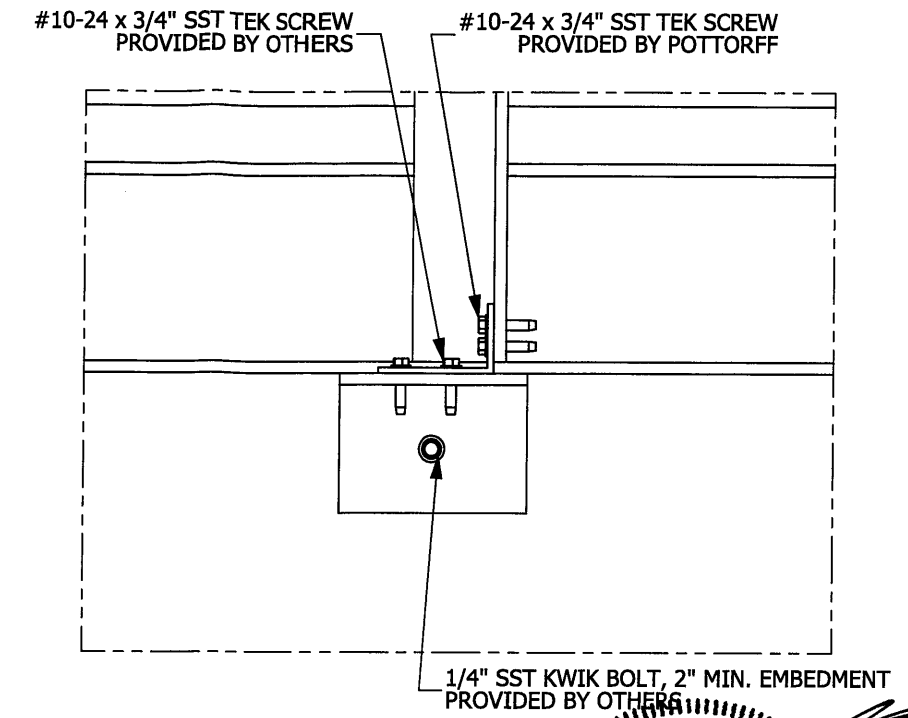
Cadsvr\tr



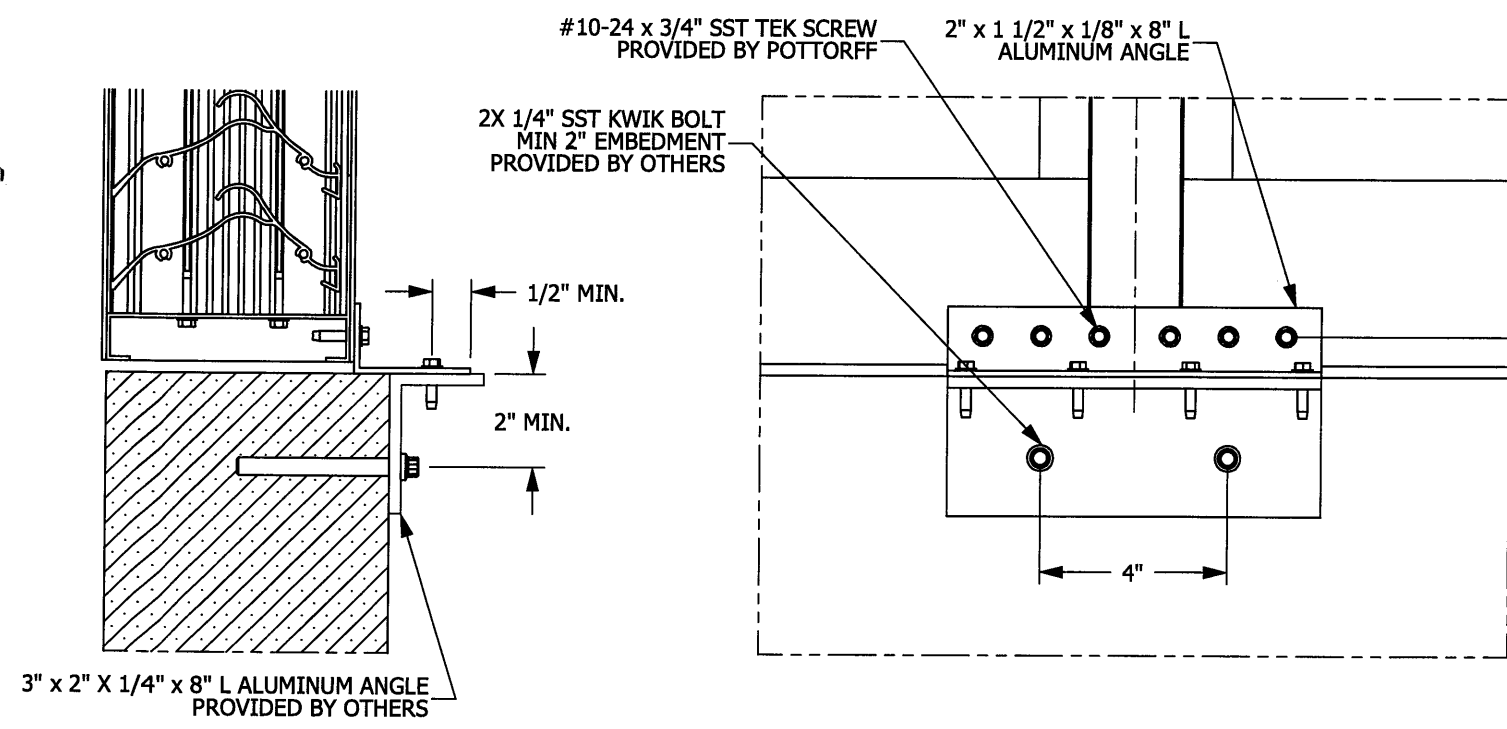
**JAMB ATTACHMENT DETAIL  
MASONRY CONDITION (TENSION CONNECTION)**



**STIFFENER ATTACHMENT DETAIL  
MASONRY CONDITION (TENSION CONNECTION)**

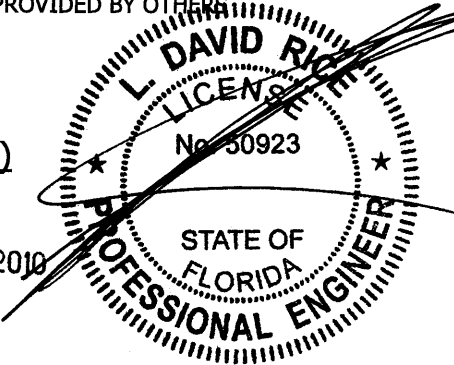


**MULLION ATTACHMENT DETAIL  
MASONRY CONDITION (TENSION CONNECTION)**



**RICE**  
ENGINEERING  
105 School Creek Trail  
Luxemburg, WI 54217  
Phone: 920.845.1042  
Fax: 920.845.1048  
www.rice-inc.com

Florida Firm No: F-01000005061  
Certificate of Authorization: #9090  
L. David Rice  
Registration No: 50923



- INSTALLATION NOTES:**
- 1) DRAWING INCLUDES INSTALLATION DETAILS TO ATTAIN MAXIMUM DESIGN PRESSURES FOR LOUVER PER CHARTS ON DRAWING 6
  - 2) IT IS ASSUMED THAT THE LOUVER SYSTEMS DO NOT SUPPORT ANY LOADS TRANSFERRED FROM THE BUILDING.
  - 3) IT IS ASSUMED THAT THE BUILDING CONDITIONS ARE ADEQUATELY DESIGNED TO SUPPORT LOADS IMPARTED BY THE LOUVER SYSTEM.
  - 4) INSTALLER TO PROVIDE GASKET MATERIAL BETWEEN DISSIMILAR MATERIALS IN ORDER TO PROTECT FROM CORROSION.
  - 5) CRITICAL EQUIPMENT TO BE PROTECTED FROM MOISTURE INGRESS.
  - 6) OTHER BUILDING CONDITIONS THAN THOSE DENOTED CAN BE UTILIZED IF ANALYZED AND APPROVED BY A PROFESSIONAL ENGINEER.
  - 7) MULTI-SECTION WIDE AND HIGH LOUVER SYSTEMS ARE ALLOWABLE PROVIDED THE INDIVIDUAL SECTIONS ARE SUPPORTED PER THE DETAIL ON THIS DRAWING AND A SUITABLE STRUCTURE IS ANALYZED AND APPROVED BY A PROFESSIONAL ENGINEER.
  - 8) ALL CONCRETE SUBSTRATE SHALL BE BE 2000 PSI OR STRONGER.

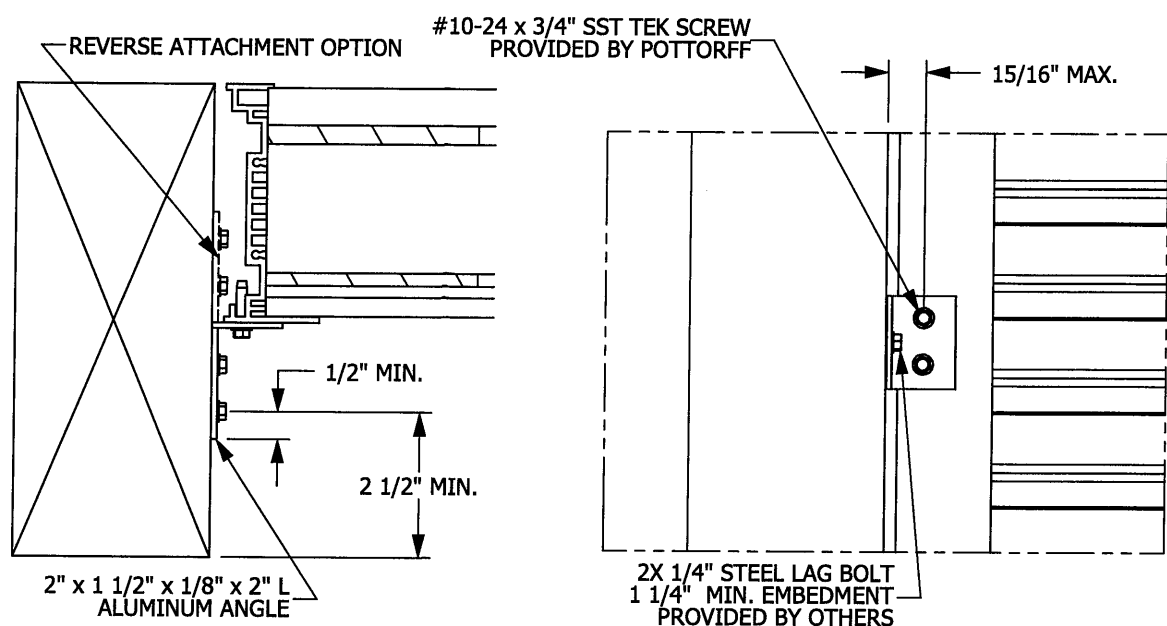
UNLESS OTHERWISE SPECIFIED DIMENSION ARE IN INCHES.	5101 Blue Mound Road Fort Worth, Texas 76106 Phone: 817-509-2300 Fax: 817-831-3110
TOLERANCE UNLESS NOTED: X.X ±0.030 X.XX ±0.015 X.XXX ±0.010 ANGLE ±1° FRACTION ±1/16	THIRD ANGLE PROJECTION
MAX HOLE BREAKOUT: 15% OF MATERIAL THICKNESS	

**ALL-LITE**  
ARCHITECTURAL PRODUCTS

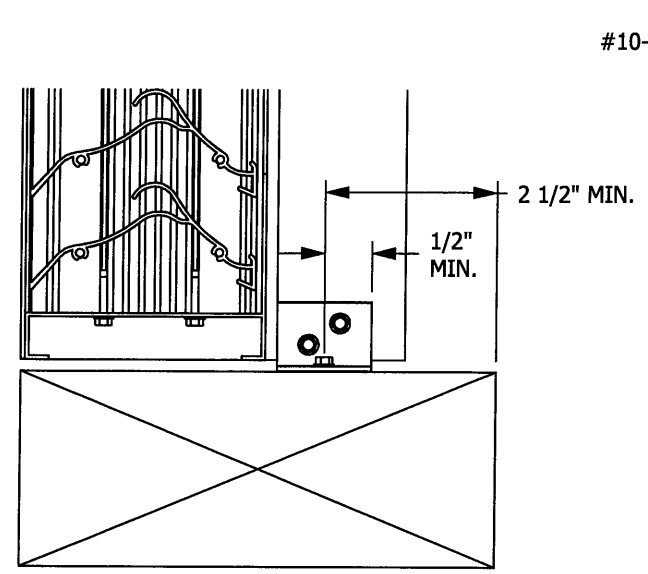
THIS DRAWING AND THE DESIGN REPRESENTED ARE THE CONFIDENTIAL AND PROPRIETARY PROPERTY OF PCI INDUSTRIES AND MAY NOT BE DISCLOSED, LOANED, COPIED, OR USED FOR ANY PURPOSE OTHER THAN DESIGN REVIEW AND APPROVAL WITHOUT THE EXPRESS WRITTEN CONSENT OF PCI INDUSTRIES.

DRAWING DESCR: MASONRY ATTACHMENT DETAILS				
PROJECT: FLORIDA BUILDING CODE LOUVERS				
LOCATION:				
CUSTOMER:				
PROJ. MGR:		DRAWN BY: TB		
DATE: 11/24/2009	CHK'D BY:	ORDER NUMBER	P.O. NUMBER	DRAWING NUMBER
SHEET: 4 of 6	SCALE: NTS			MASONRY COND. (TENSION)

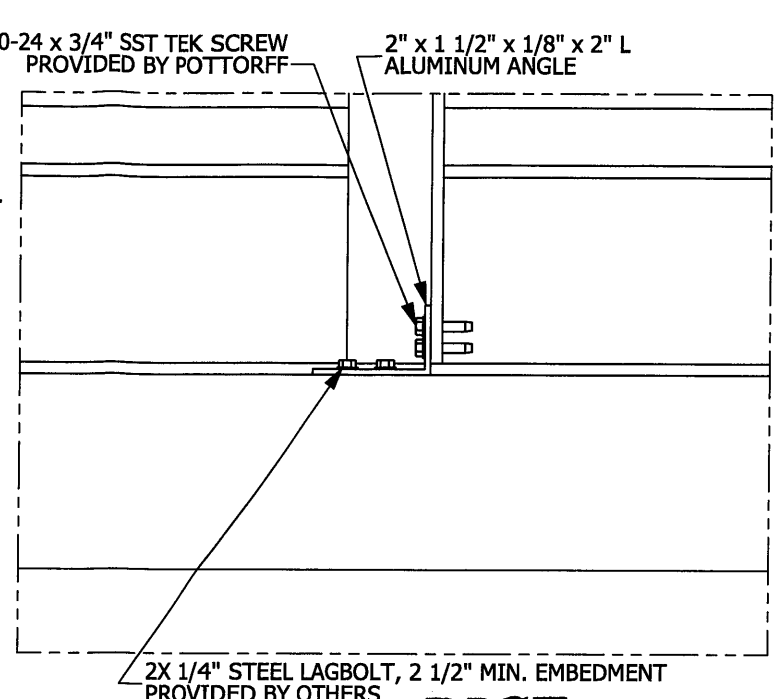
Tom\LOUVERS\Florida Building Code Louvers  
Cadsrvr



**JAMB ATTACHMENT DETAIL  
WOOD BLOCK CONDITION**



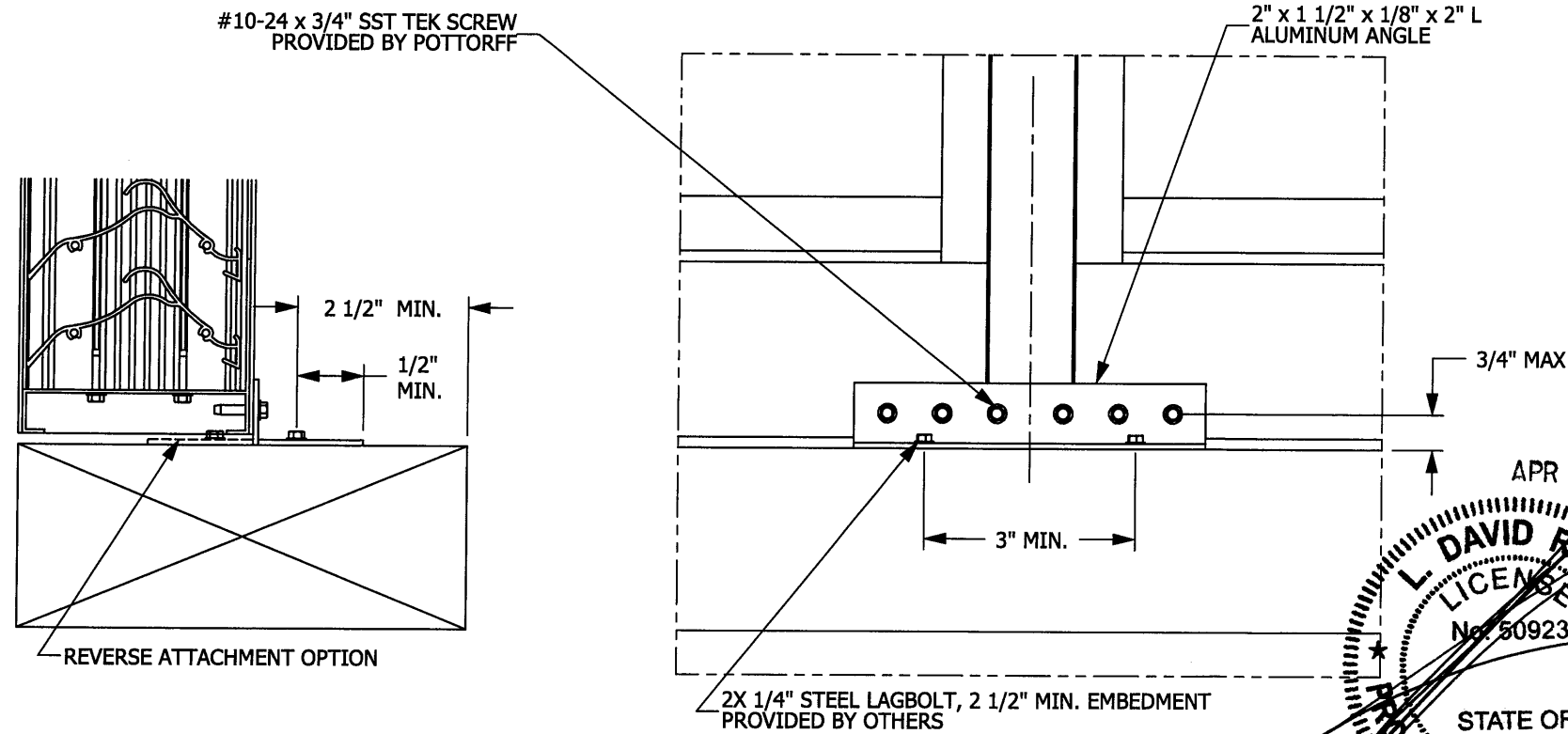
**STIFFENER ATTACHMENT DETAIL  
WOOD BLOCK CONDITION**



**RICE  
ENGINEERING**

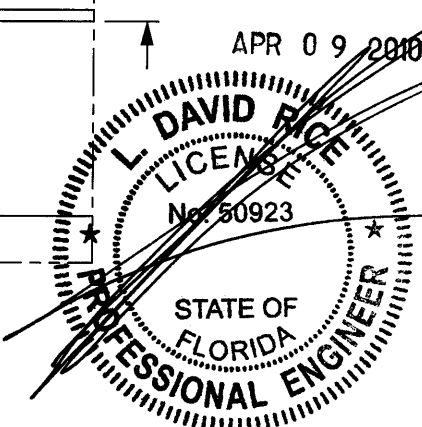
105 School Creek Trail  
Luxemburg, WI 54217  
Phone: 920.845.1042  
Fax: 920.845.1048  
www.rice-inc.com

Florida Firm No: F-0100005061  
Certificate of Authorization: #9090  
L. David Rice  
Registration No: 50923



**MULLION ATTACHMENT DETAIL  
WOOD BLOCK CONDITION**

- INSTALLATION NOTES:**
- 1) DRAWING INCLUDES INSTALLATION DETAILS TO ATTAIN MAXIMUM DESIGN PRESSURES FOR LOUVER PER CHARTS ON DRAWING 6
  - 2) IT IS ASSUMED THAT THE LOUVER SYSTEMS DO NOT SUPPORT ANY LOADS TRANSFERRED FROM THE BUILDING.
  - 3) IT IS ASSUMED THAT THE BUILDING CONDITIONS ARE ADEQUATELY DESIGNED TO SUPPORT LOADS IMPARTED BY THE LOUVER SYSTEM.
  - 4) INSTALLER TO PROVIDE GASKET MATERIAL BETWEEN DISSIMILAR MATERIALS IN ORDER TO PROTECT FROM CORROSION.
  - 5) CRITICAL EQUIPMENT TO BE PROTECTED FROM MOISTURE INGRESS.
  - 6) OTHER BUILDING CONDITIONS THAN THOSE DENOTED CAN BE UTILIZED IF ANALYZED AND APPROVED BY A PROFESSIONAL ENGINEER.
  - 7) MULTI-SECTION WIDE AND HIGH LOUVER SYSTEMS ARE ALLOWABLE PROVIDED THE INDIVIDUAL SECTIONS ARE SUPPORTED PER THE DETAIL ON THIS DRAWING AND A SUITABLE STRUCTURE IS ANALYZED AND APPROVED BY A PROFESSIONAL ENGINEER.
  - 8) ALL WOOD SUBSTRATE SHALL BE G=0.42 DENSITY OR BETTER.



UNLESS OTHERWISE SPECIFIED DIMENSION ARE IN INCHES.

TOLERANCE UNLESS NOTED:  
 X.X ±0.030  
 X.XX ±0.015  
 X.XXX ±0.010  
 ANGLE ±1°  
 FRACTION ±1/16

MAX HOLE BREAKOUT:  
 15% OF MATERIAL THICKNESS

5101 Blue Mound Road  
Fort Worth, Texas 76106  
Phone: 817-509-2300  
Fax: 817-831-3110

THIRD ANGLE PROJECTION

**ALL-LITE  
ARCHITECTURAL PRODUCTS**

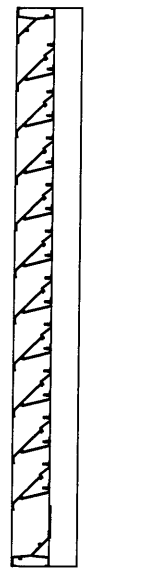
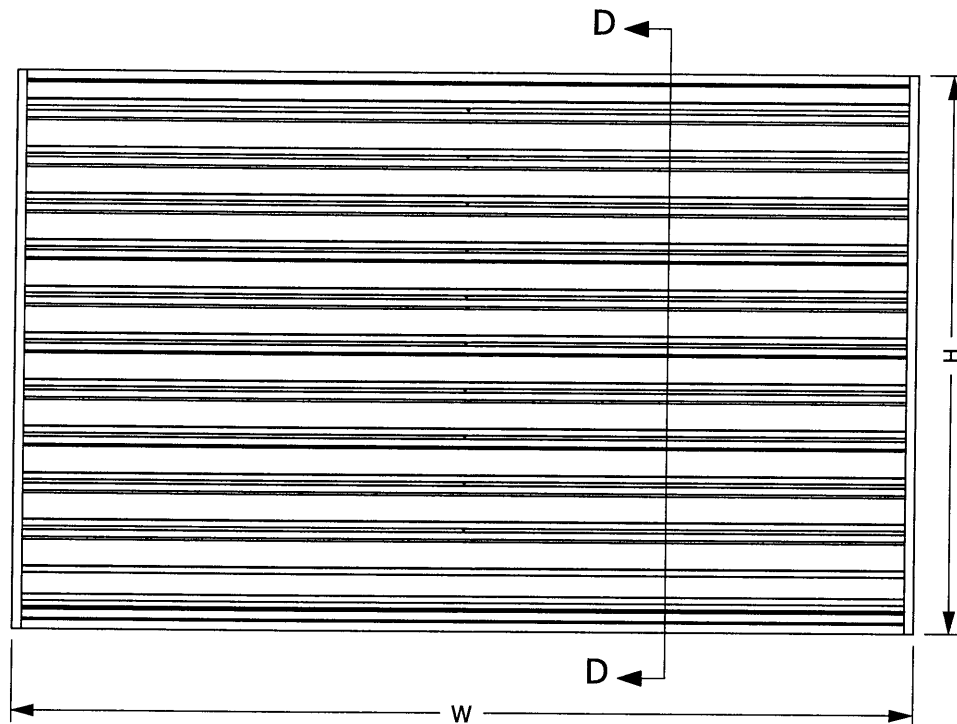
THIS DRAWING AND THE DESIGN REPRESENTED ARE THE CONFIDENTIAL AND PROPRIETARY PROPERTY OF PCI INDUSTRIES AND MAY NOT BE DISCLOSED, LOANED, COPIED, OR USED FOR ANY PURPOSE OTHER THAN DESIGN REVIEW AND APPROVAL WITHOUT THE EXPRESS WRITTEN CONSENT OF PCI INDUSTRIES.

DRAWING DESCR: WOOD ATTACHMENT DETAILS				
PROJECT: FLORIDA BUILDING CODE LOUVERS				
LOCATION:				
CUSTOMER:				
PROJ. MGR:		DRAWN BY: TB		
DATE: 11/24/2009	CHK'D BY:	ORDER NUMBER	P.O. NUMBER	DRAWING NUMBER
SHEET: 5 of 6	SCALE: NTS			WOOD CONDITION

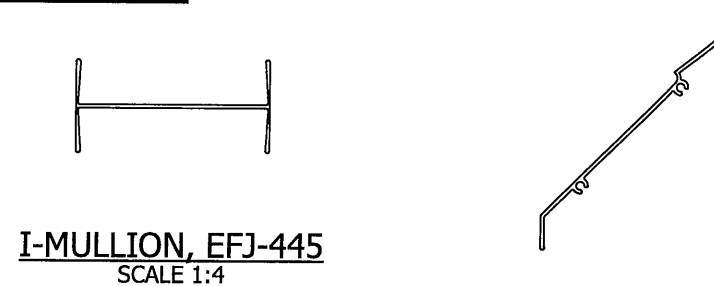
Louver Tributary Height (in.)	EFJ- 445 LOUVER MODEL - Single Section Width Assemblies - Maximum Allowable Design Pressure - (PSF)																							
	Louver Width (in.)																							
	12"	18"	24"	30"	36"	42"	48"	54"	60"	66"	72"	78"	84"	90"	96"	102"	108"	114"	120"					
12"	187	125	93	75	62	50	34	24	17	68	62	57	53	50	47	43	38	34	31					
18"	187	125	93	75	62	50	34	24	17	68	62	57	53	50	47	43	38	34	31					
24"	187	125	93	75	62	50	34	24	17	68	62	57	53	50	47	43	38	34	31					
30"	187	125	93	75	62	50	34	24	17	61	56	52	48	45	42	40	37	34	31					
36"	187	125	93	75	62	50	34	24	17	42	39	36	33	50	47	43	38	34	31					
42"	187	125	93	75	62	50	34	24	17	54	50	46	43	40	37	35	33	32	31					
48"	187	125	93	75	62	50	34	24	17	42	38	35	33	31	47	43	38	34	31					
54"	187	125	93	75	62	50	34	24	17	33	57	53	49	46	43	40	38	34	31					
60"	187	125	93	75	62	50	34	24	17	50	46	43	40	37	35	33	38	34	31					
66"	187	125	93	75	62	50	34	24	17	SIZES IN SHADED CELL GET ANGLE STIFFENER									17					
72"	187	125	93	75	62	50	34	24	17															
78"	187	125	93	75	62	50	34	24	17															
84"	187	125	93	75	62	50	34	24	17															
90"	187	125	93	75	62	50	34	24	17															
96"	187	125	93	75	62	50	34	24	17															
102"	187	125	93	75	62	50	34	24	17															
108"	187	125	93	75	62	50	34	24	17															
114"	187	125	93	75	62	50	34	24	17															
120"	187	125	93	75	62	50	34	24	17															

Louver Tributary Height	EFJ - 445 LOUVER MODEL - Multiple Section Width Assemblies - Maximum Allowable Design Pressure - (PSF)																							
	Louver Width (in.)																							
	12"	18"	24"	30"	36"	42"	48"	54"	60"	66"	72"	78"	84"	90"	96"	102"	108"	114"	120"					
12"	187	125	93	75	62	50	34	24	17	68	62	57	53	50	47	43	38	34	31					
18"	187	125	93	75	62	50	34	24	17	68	62	57	53	50	47	43	38	34	31					
24"	187	125	93	75	62	50	34	24	17	68	62	57	53	50	47	43	38	34	31					
30"	187	125	93	75	62	50	34	24	17	61	56	52	48	45	42	40	37	34	31					
36"	187	125	93	75	62	50	34	24	17	42	39	36	33	50	47	43	38	34	31					
42"	187	125	93	75	62	50	34	24	17	54	50	46	43	40	37	35	33	32	31					
48"	187	125	93	75	62	50	34	24	17	42	38	35	33	31	47	43	38	34	31					
54"	187	125	93	75	62	50	34	24	17	33	57	53	49	46	43	40	38	34	31					
60"	187	125	93	75	62	50	34	24	17	50	46	43	40	37	35	33	34	33	31					
66"	187	125	93	75	62	50	34	24	17	SIZES IN SHADED CELL GET ANGLE STIFFENER									17					
72"	187	125	93	75	62	50	34	24	17															
78"	187	125	93	75	62	50	34	24	17															
84"	187	125	93	75	62	50	34	24	17															
90"	187	125	93	75	62	50	34	24	17															
96"	187	125	93	75	62	50	34	24	17															
102"	171	114	85	68	57	49	34	24	17															
108"	152	102	76	61	51	44	34	24	17															
114"	137	91	68	55	46	39	34	24	17															
120"	123	82	62	49	41	35	31	24	17															

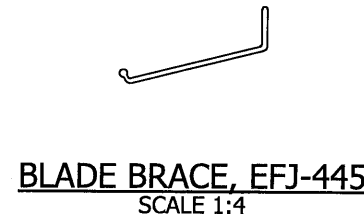
Louver Height (in.)	Stiffener Angle Dimensions (b x a x t)										
	Width (in)										
	66"	72"	78"	84"	90"	96"	102"	108"	114"	120"	
12"	2"x1.5"x1/8"										
18"											
24"											
30"											
36"	2"x2"x1/8"										
42"											
48"	2" x 2" x 1/4"										
54"											
60"											3" x 2" x 1/4"



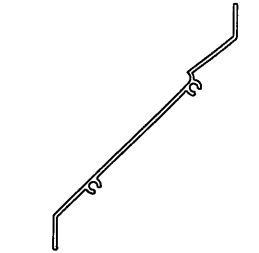
SECTION D-D



I-MULLION, EFJ-445  
SCALE 1:4



BLADE BRACE, EFJ-445  
SCALE 1:4



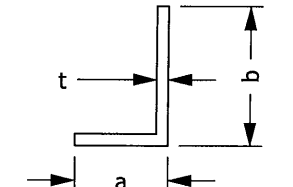
BLADE, EFJ-445  
SCALE 1:4



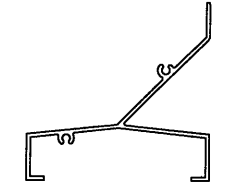
JAMB, EFJ-445  
SCALE 1:4



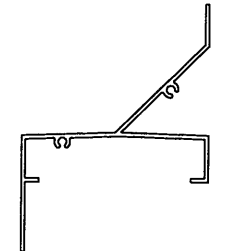
FLANGED JAMB, EFJ-445  
SCALE 1:4



STIFFENER, EFJ-445  
SCALE 1:4



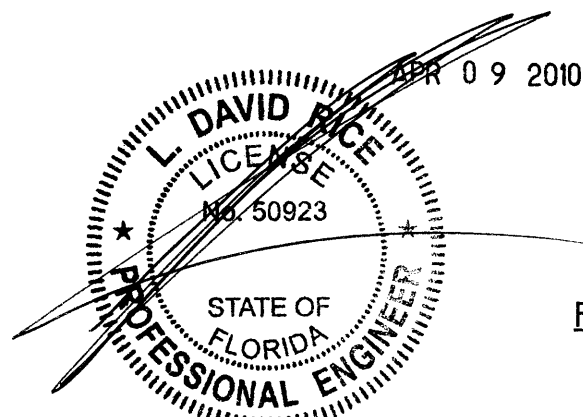
HEAD/SILL, EFJ-445  
SCALE 1:4



FLANGED HEAD/SILL, EFJ-445  
SCALE 1:4

**RICE**  
ENGINEERING  
105 School Creek Trail  
Luxemburg, WI 54217  
Phone: 920.845.1042  
Fax: 920.845.1048  
www.rice-inc.com

Florida Firm No: F-01000005061  
Certificate of Authorization: #9090  
L. David Rice  
Registration No: 50923



UNLESS OTHERWISE SPECIFIED DIMENSION ARE IN INCHES.  
TOLERANCE UNLESS NOTED:  
X.X ±0.030  
X.XX ±0.015  
X.XXX ±0.010  
ANGLE ±1°  
FRACTION ±1/16  
MAX HOLE BREAKOUT: 15% OF MATERIAL THICKNESS

5101 Blue Mound Road  
Fort Worth, Texas 76106  
Phone: 817-509-2300  
Fax: 817-831-3110

THIRD ANGLE PROJECTION

**ALL-LITE**  
ARCHITECTURAL PRODUCTS  
THIS DRAWING AND THE DESIGN REPRESENTED ARE THE CONFIDENTIAL AND PROPRIETARY PROPERTY OF PCI INDUSTRIES AND MAY NOT BE DISCLOSED, LOANED, COPIED, OR USED FOR ANY PURPOSE OTHER THAN DESIGN REVIEW AND APPROVAL WITHOUT THE EXPRESS WRITTEN CONSENT OF PCI INDUSTRIES.

DRAWING DESCR: EFJ-445, ELEVATION & DETAILS				
PROJECT: FLORIDA BUILDING CODE LOUVERS				
LOCATION:				
CUSTOMER:				
PROJ. MGR:		DRAWN BY: TB		
DATE: 11/24/2009	CHK'D BY:	ORDER NUMBER	P.O. NUMBER	DRAWING NUMBER
SHEET: 6 of 6	SCALE: 1:20			EFJ-445