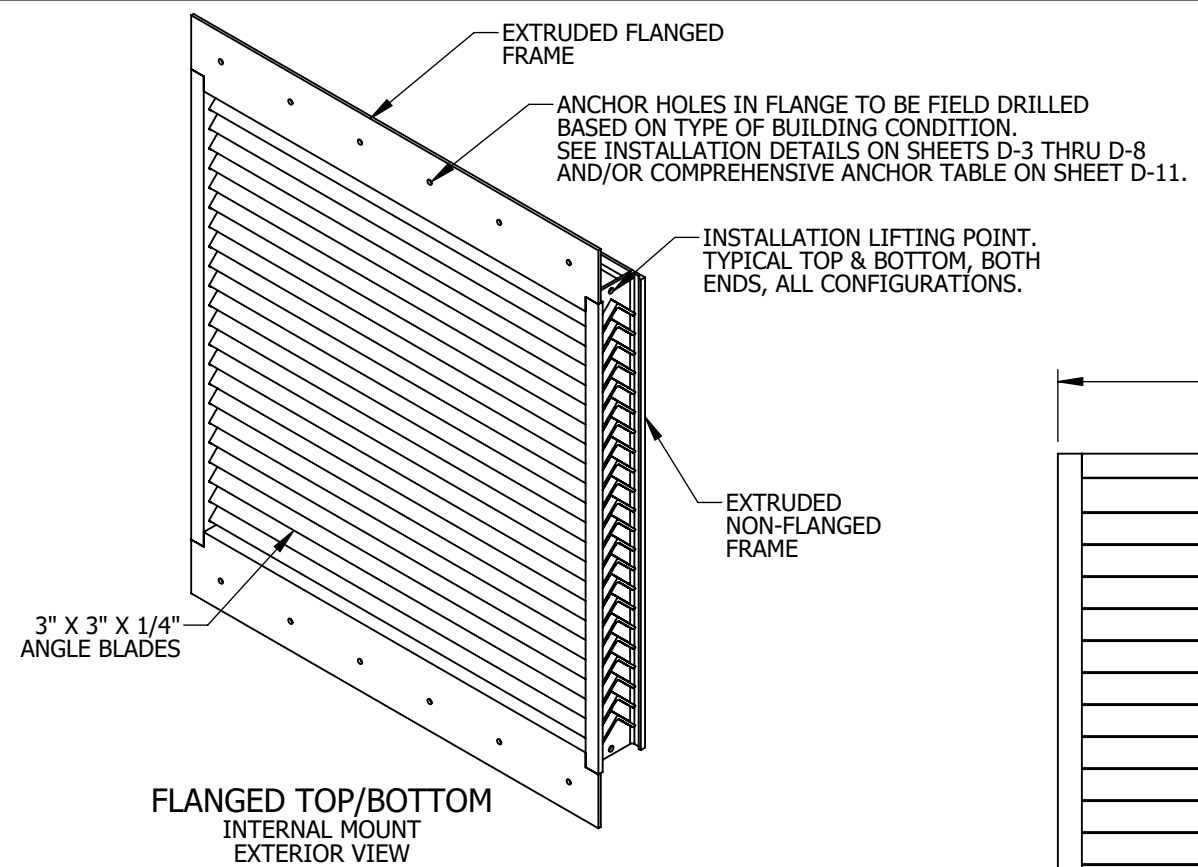
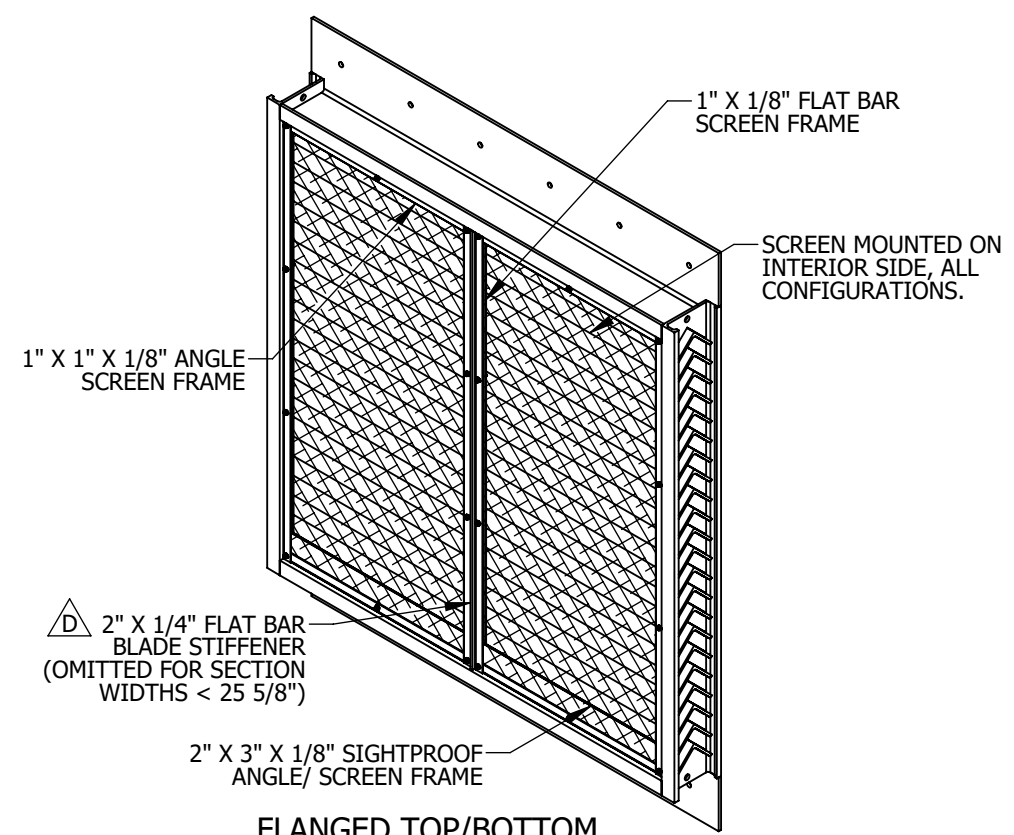


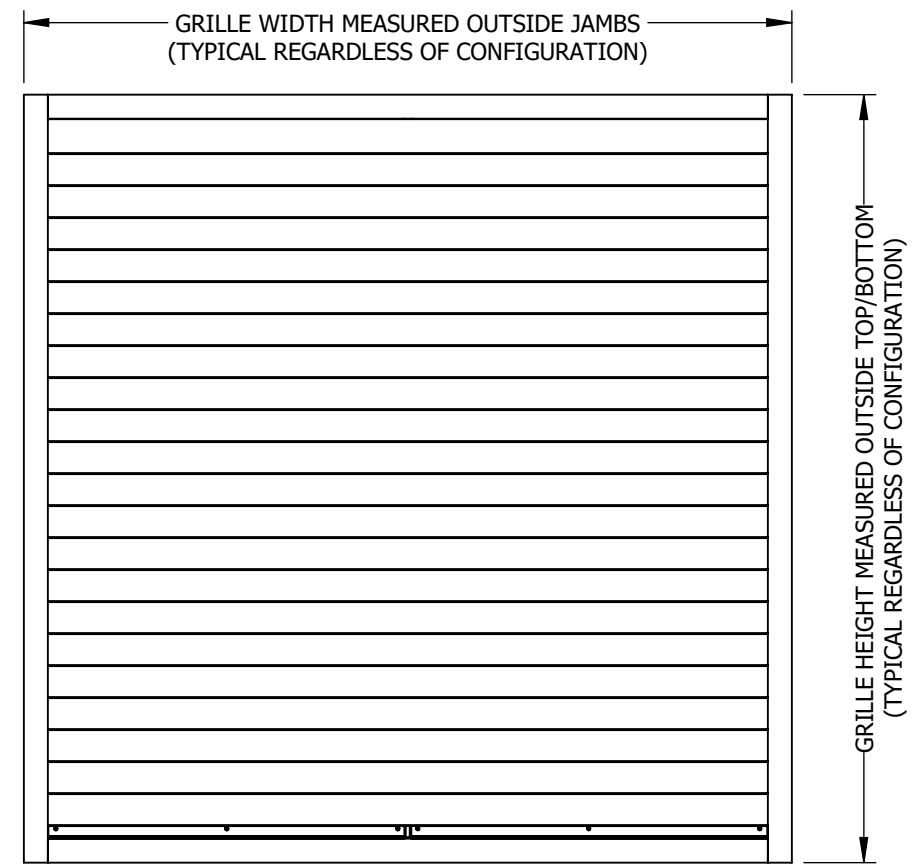
I:\Engineering Library\ECN-EIN\2018\ECN 18-0054 - Revise XAV-545 Installation Drawings\



FLANGED TOP/BOTTOM
INTERNAL MOUNT
EXTERIOR VIEW



FLANGED TOP/BOTTOM
INTERNAL MOUNT
INTERIOR VIEW



NON-FLANGED
EXTERIOR VIEW

FOR NON-FLANGED UNITS GRILLE IS SIZED 1/2" UNDER NOMINAL SIZE
FOR FLANGED INTERNAL MOUNT UNITS GRILLE IS SIZED 1/2" UNDER NOMINAL SIZE
FOR FLANGED EXTERNAL MOUNT UNITS GRILLE IS SIZED 1/2" OVER NOMINAL SIZE

- NOTES:**
- THIS DRAWING INCLUDES INSTALLATION DETAILS TO ATTAIN A 300-PSF DESIGN PRESSURE ACROSS ALL SIZES AND IMPACT RESISTANCE PER FEMA 361/320 AND ICC 500.
 - GRILLE TESTED FOR LARGE MISSILE IMPACT TEST WITH 15 LB 2 X 4 AND 100 MPH VELOCITY.
 - IT IS ASSUMED THAT THE GRILLE SYSTEMS DO NOT SUPPORT ANY LOADS TRANSFERRED FROM THE BUILDING CONDITION.
 - IT IS ASSUMED THAT THE BUILDING CONDITIONS ARE ADEQUATELY DESIGNED TO SUPPORT LOADS IMPARTED BY THE GRILLE.
 - GRILLE DOES NOT PREVENT MOISTURE INGRESS. CRITICAL EQUIPMENT SHOULD BE PROTECTED.
 - ALL HARDWARE SHOWN IS SUPPLIED BY ALL-LITE UNLESS OTHERWISE SPECIFIED. HARDWARE IS SHIPPED LOOSE, MILL FINISH.
 - SEPARATION OF DISSIMILAR METALS/ ALUM. TO STEEL SHOULD BE TAKEN INTO CONSIDERATION, AND IS BY OTHERS UNLESS SPECIFIED OTHERWISE.
 - ALL BACKER ROD, SEALANT/CAULKING IS SUPPLIED BY OTHERS.
 - ALL HOLES, HARDWARE, ANCHORS, AND/OR SHIMS REQUIRED TO INSTALL UNITS TO BUILDING, STRUCTURE, OR EXISTING CONDITION BY OTHERS. HOLES AND HARDWARE, WHERE SHOWN, ARE MINIMUM SIZES, QUANTITIES, AND/OR SPACING RECOMMENDED BY ALL-LITE. THE E.O.R. HAS FINAL RESPONSIBILITY FOR SIZE AND QUANTITY OF ANCHORS.
 - APPROXIMATE WEIGHT FOR GRILLE IS 12 LBS/SQ-FT.

REV. NO.	DESCRIPTION	DATE	DRAWN BY
D	ECN 18-0054	9/21/2018	LGH / NWW
C	REVISED STATIC PRESSURE TABLE	4/4/2018	JG
B	ECN 18-0011	3/01/2018	LGH
A	INITIAL RELEASE - ECN 17-0100	01/26/2018	LGH

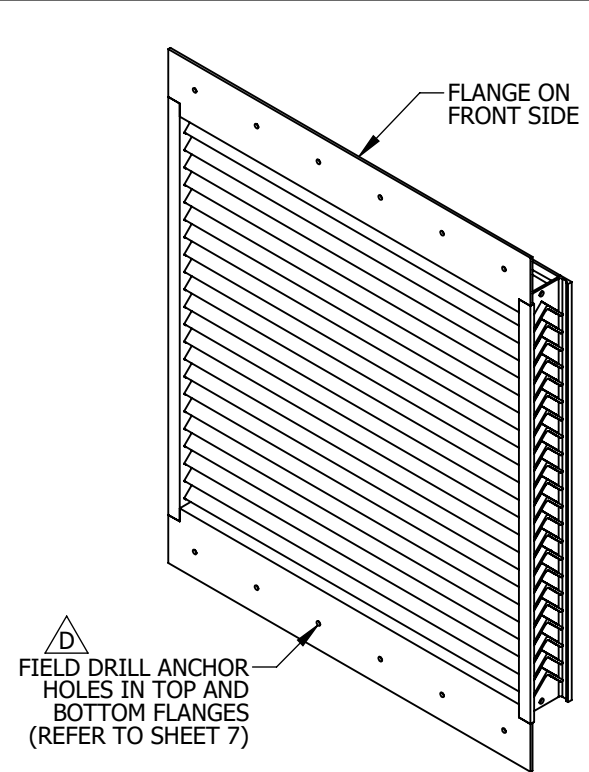
UNLESS OTHERWISE SPECIFIED DIMENSION ARE IN INCHES.	5101 Blue Mound Road Fort Worth, Texas 76106 Phone: 817-509-2300 Fax: 817-831-3110
TOLERANCE UNLESS NOTED: X.X ±0.060 X.XX ±0.030 X.XXX ±0.010 ANGLE ±1° FRACTION ±1/16	THIRD ANGLE PROJECTION
MAX HOLE BREAKOUT: 15% OF MATERIAL THICKNESS	

ALL-LITE
ARCHITECTURAL PRODUCTS

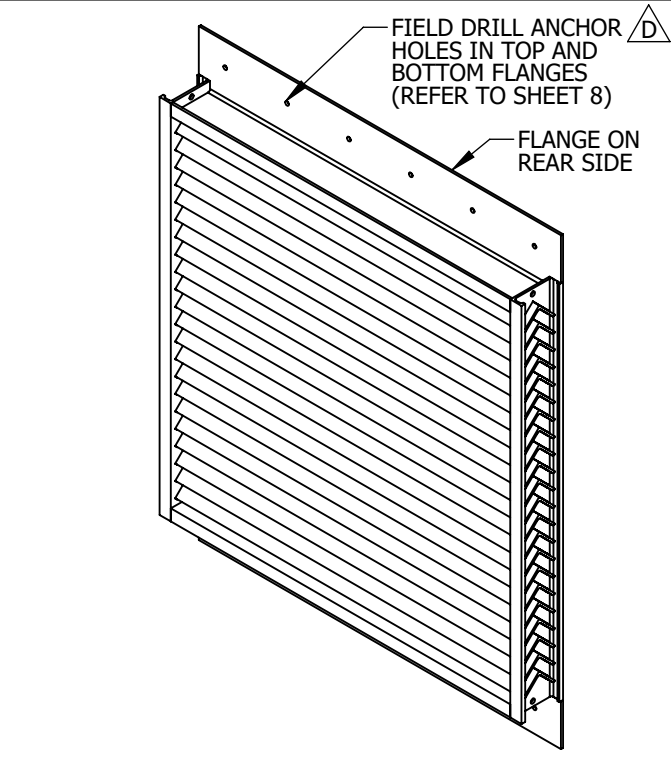
THIS DRAWING AND THE DESIGN REPRESENTED ARE THE CONFIDENTIAL AND PROPRIETARY PROPERTY OF PCI INDUSTRIES AND MAY NOT BE DISCLOSED, LOANED, COPIED, OR USED FOR ANY PURPOSE OTHER THAN DESIGN REVIEW AND APPROVAL WITHOUT THE EXPRESS WRITTEN CONSENT OF PCI INDUSTRIES.

DRAWING DESCR: COVER SHEET				
PROJECT: XAV-545 FEMA 361/320 GRILLE ASSEMBLY & INSTALLATION DETAILS				
LOCATION:				
CUSTOMER:				
PROJ. MGR: NATHAN WOODWORTH		DRAWN BY: LGH		
DATE: 12/14/2017	CHK'D BY: JG/nww	ORDER NUMBER	P.O. NUMBER	DRAWING NUMBER
SHEET: 1 of 17	SCALE: NONE			M-60133 C-1

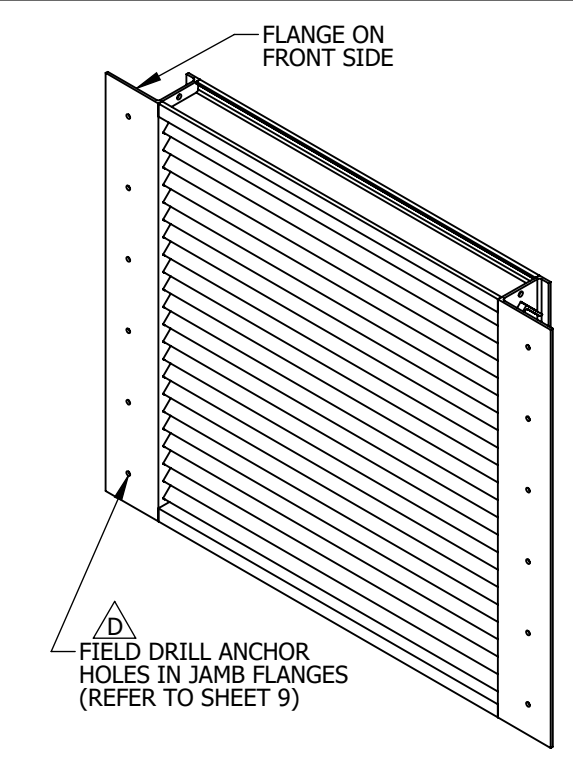
AVAILABLE CONFIGURATIONS



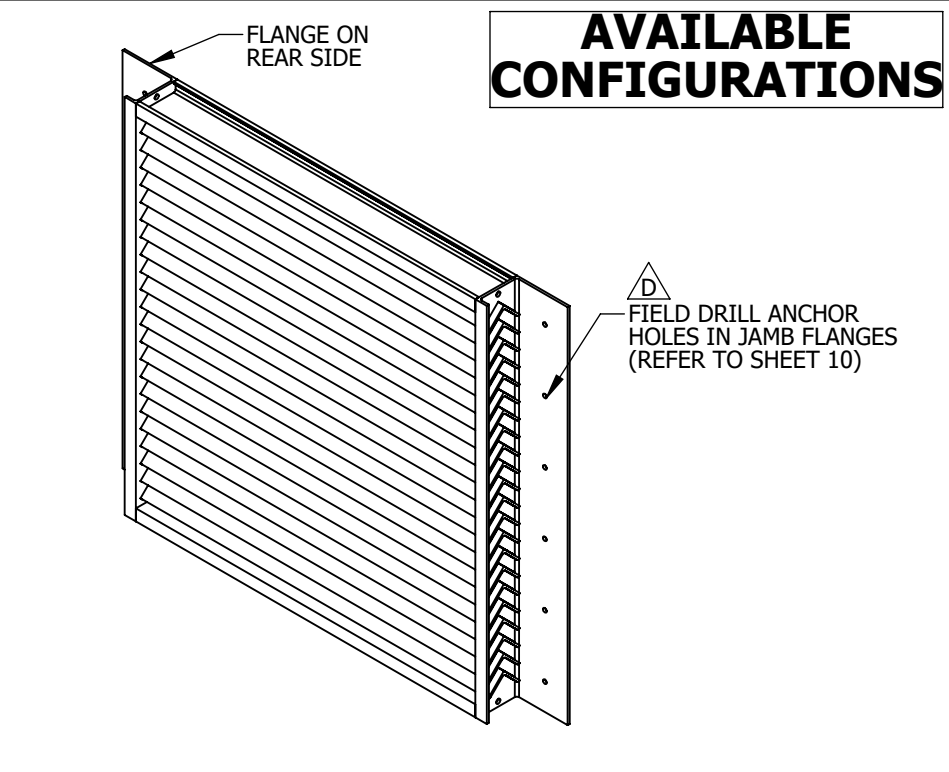
FLANGED TOP/BOTTOM INTERNAL MOUNT
(NOT AVAILABLE IF MORE THAN ONE SECTION HIGH)



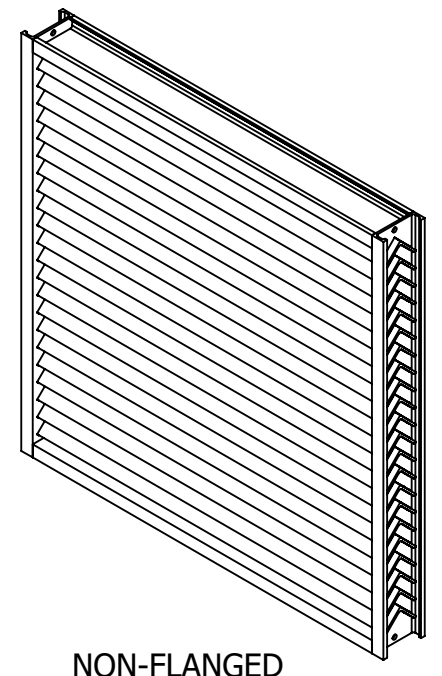
FLANGED TOP/BOTTOM EXTERNAL MOUNT
(NOT AVAILABLE IF MORE THAN ONE SECTION HIGH)



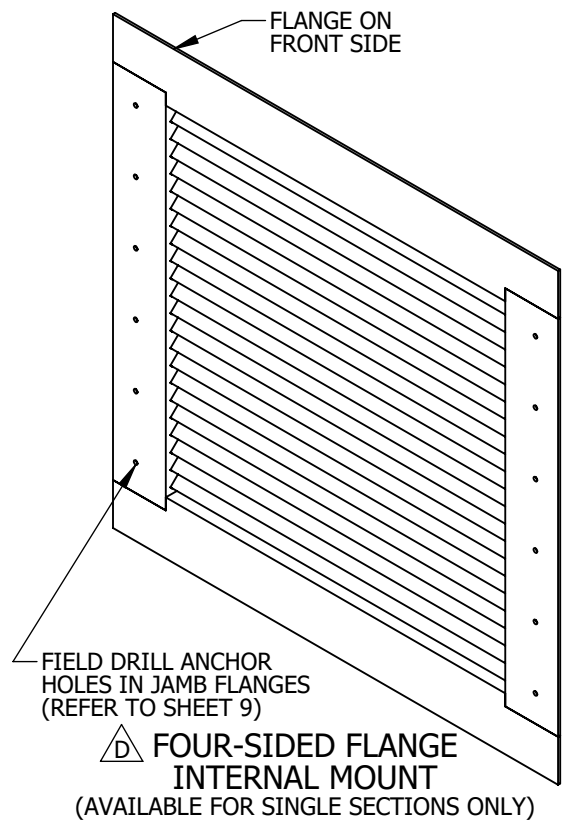
FLANGED JAMBS INTERNAL MOUNT
(NOT AVAILABLE IF MORE THAN ONE SECTION WIDE)



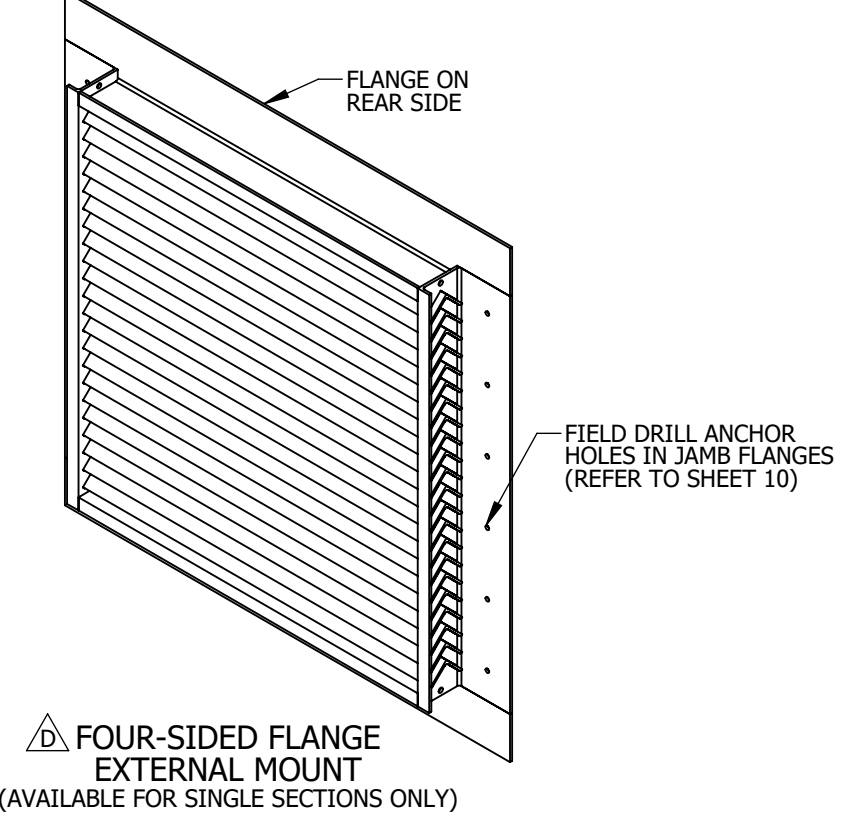
FLANGED JAMBS EXTERNAL MOUNT
(NOT AVAILABLE IF MORE THAN ONE SECTION WIDE)



NON-FLANGED



FOUR-SIDED FLANGE INTERNAL MOUNT
(AVAILABLE FOR SINGLE SECTIONS ONLY)



FOUR-SIDED FLANGE EXTERNAL MOUNT
(AVAILABLE FOR SINGLE SECTIONS ONLY)

I:\Engineering Library\ECN-EIN\2018\ECN 18-0054 - Revise XAV-545 Installation Drawings

REV. NO.	DESCRIPTION	DATE	DRAWN BY
D	ECN 18-0054	9/21/2018	LGH / NWW
C	REVISED STATIC PRESSURE TABLE	4/4/2018	JG
B	ECN 18-0011	3/01/2018	LGH
A	INITIAL RELEASE - ECN 17-0100	01/26/2018	LGH

UNLESS OTHERWISE SPECIFIED DIMENSION ARE IN INCHES.

TOLERANCE UNLESS NOTED:
 X.X ±0.060
 X.XX ±0.030
 X.XXX ±0.010
 ANGLE ±1°
 FRACTION ±1/16

MAX HOLE BREAKOUT:
 15% OF MATERIAL THICKNESS

5101 Blue Mound Road
 Fort Worth, Texas 76106
 Phone: 817-509-2300
 Fax: 817-831-3110

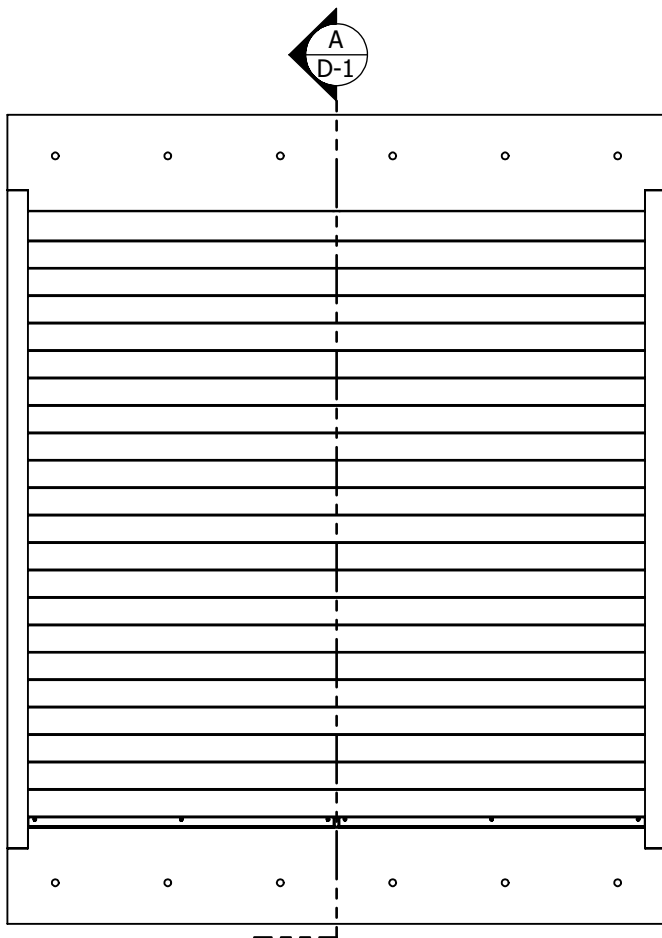
THIRD ANGLE PROJECTION

ALL-LITE
ARCHITECTURAL PRODUCTS

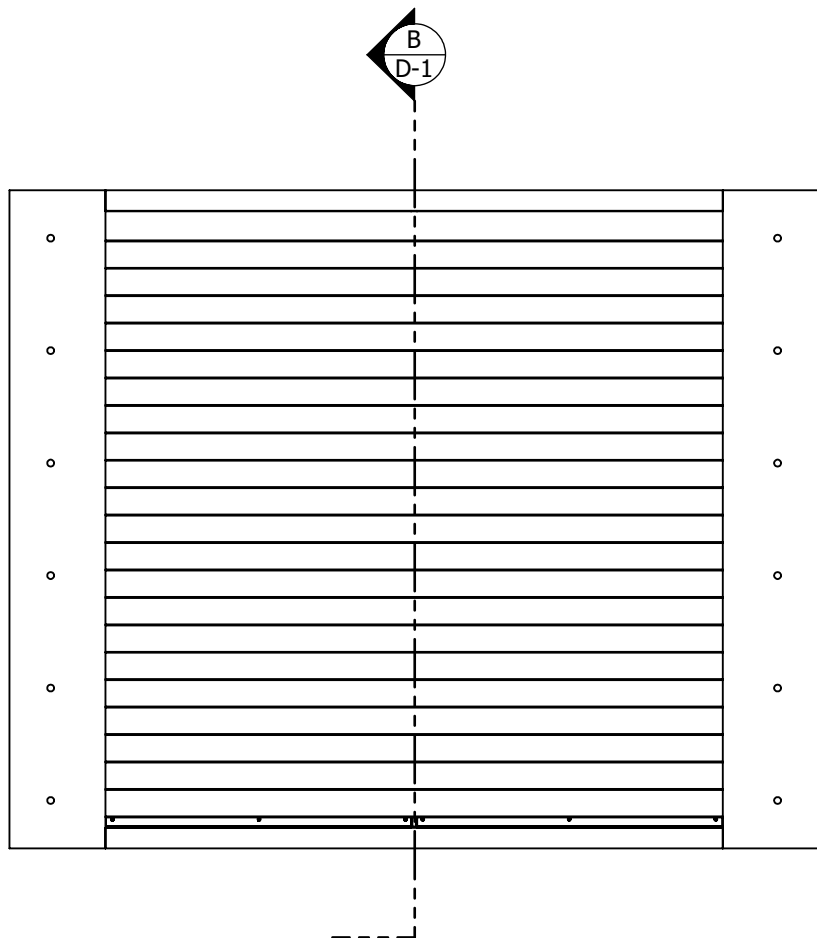
THIS DRAWING AND THE DESIGN REPRESENTED ARE THE CONFIDENTIAL AND PROPRIETARY PROPERTY OF PCI INDUSTRIES AND MAY NOT BE DISCLOSED, LOANED, COPIED, OR USED FOR ANY PURPOSE OTHER THAN DESIGN REVIEW AND APPROVAL WITHOUT THE EXPRESS WRITTEN CONSENT OF PCI INDUSTRIES.

DRAWING DESCR: AVAILABLE CONFIGURATIONS				
PROJECT: XAV-545 FEMA 361/320 GRILLE ASSEMBLY & INSTALLATION DETAILS				
LOCATION:				
CUSTOMER:				
PROJ. MGR: NATHAN WOODWORTH		DRAWN BY: LGH		
DATE: 12/14/2017	CHK'D BY: JG/nww	ORDER NUMBER	P.O. NUMBER	DRAWING NUMBER
SHEET: 2 of 17	SCALE: NONE			M-60133 C-2

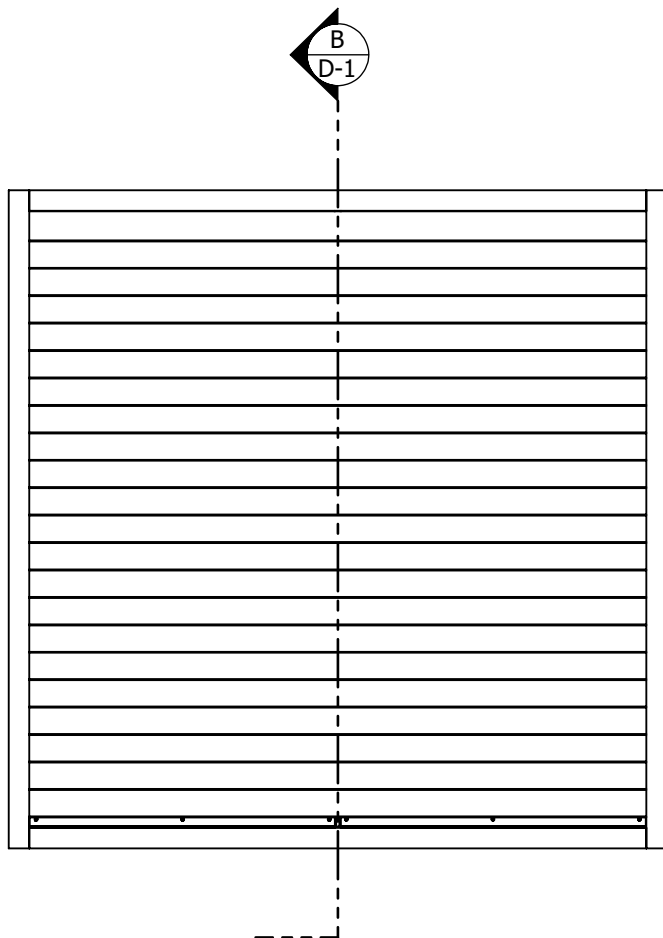
SINGLE SECTION ASSEMBLIES



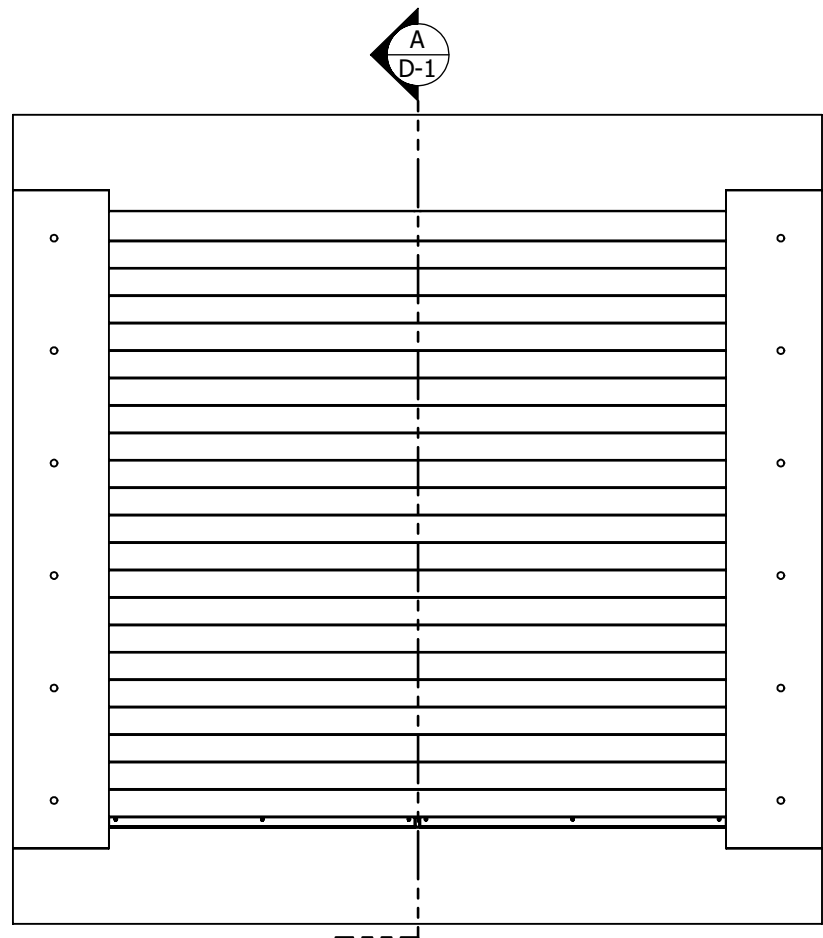
SINGLE SECTION ARRANGEMENT
FLANGED TOP/BOTTOM
INTERNAL MOUNT, EXTERIOR VIEW



SINGLE SECTION ARRANGEMENT
FLANGED JAMBS
INTERNAL MOUNT, EXTERIOR VIEW



SINGLE SECTION ARRANGEMENT
NON-FLANGED
INTERNAL MOUNT, EXTERIOR VIEW



△ SINGLE SECTION ARRANGEMENT
FOUR-SIDED FLANGE
INTERNAL MOUNT, EXTERIOR VIEW

I:\Engineering Library\ECN-EIN\2018\ECN 18-0054 - Revise XAV-545 Installation Drawings\

REV. NO.	DESCRIPTION	DATE	DRAWN BY
D	ECN 18-0054	9/21/2018	LGH / NWW
C	REVISED STATIC PRESSURE TABLE	4/4/2018	JG
B	ECN 18-0011	3/01/2018	LGH
A	INITIAL RELEASE - ECN 17-0100	01/26/2018	LGH

UNLESS OTHERWISE SPECIFIED
DIMENSION ARE IN INCHES.

TOLERANCE UNLESS NOTED:
 X.X ±0.060
 X.XX ±0.030
 X.XXX ±0.010
 ANGLE ±1°
 FRACTION ±1/16

MAX HOLE BREAKOUT:
15% OF MATERIAL THICKNESS

5101 Blue Mound Road
Fort Worth, Texas 76106
Phone: 817-509-2300
Fax: 817-831-3110

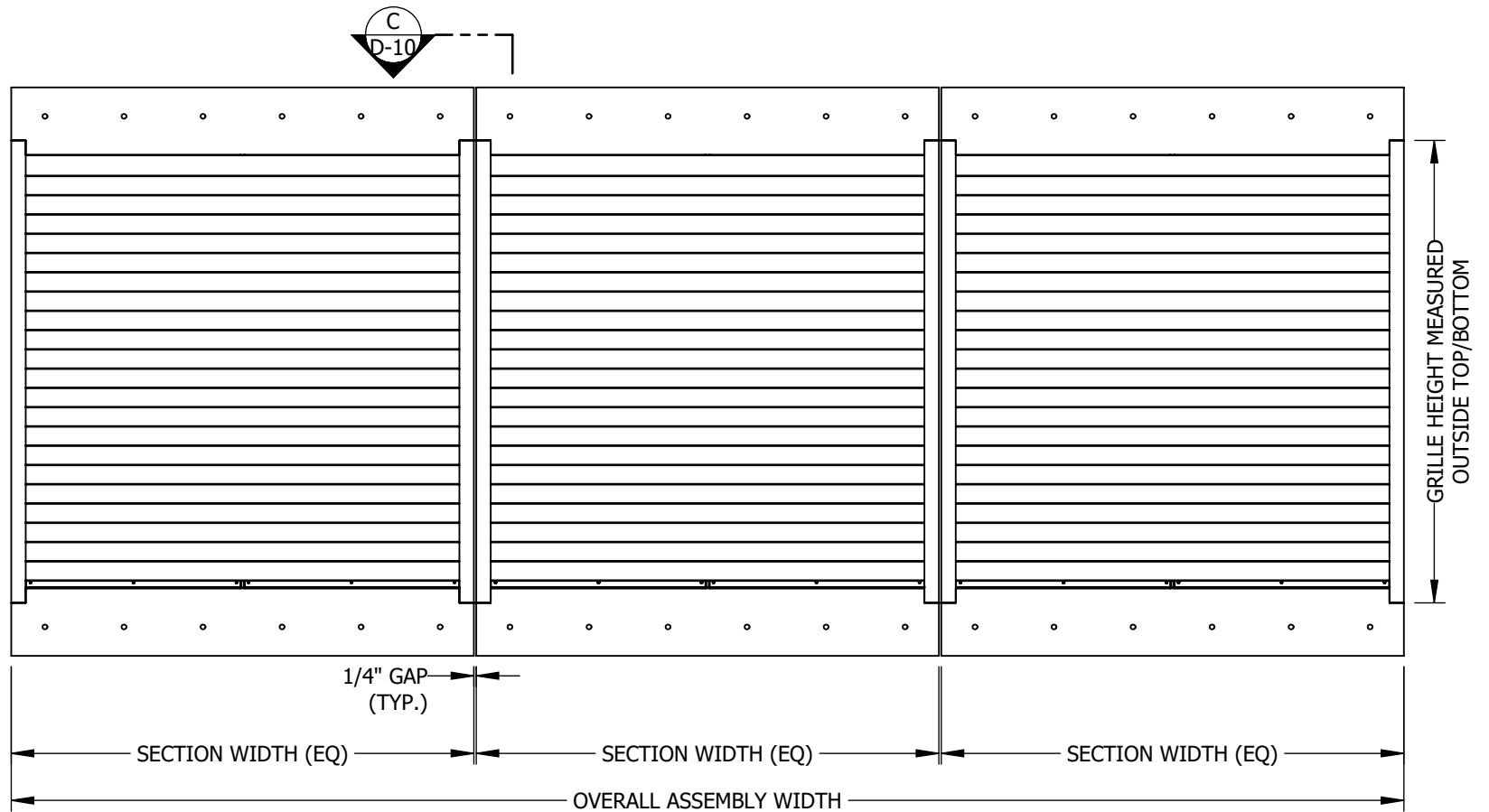
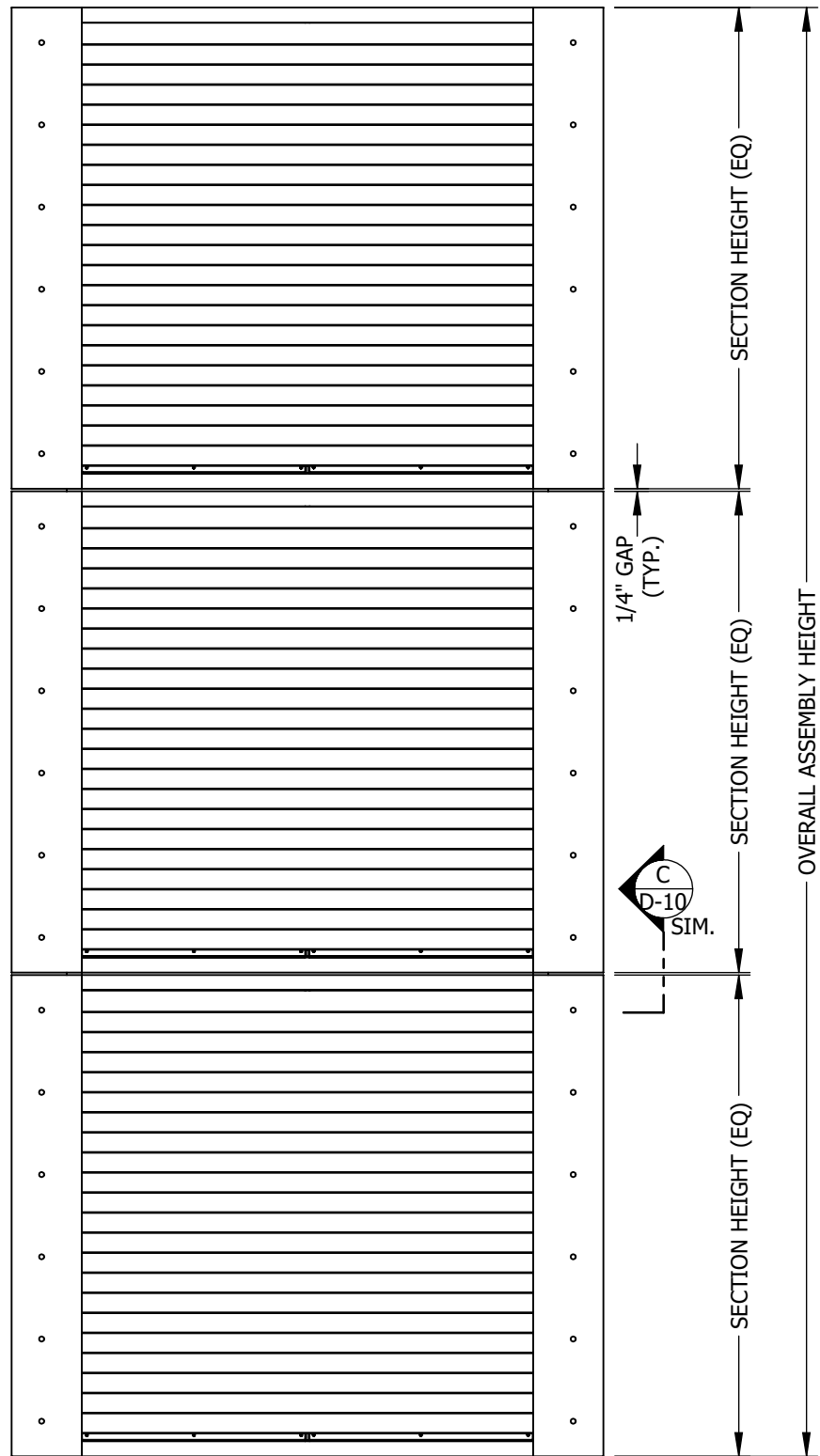
THIRD ANGLE PROJECTION

ALL-LITE
ARCHITECTURAL PRODUCTS

THIS DRAWING AND THE DESIGN REPRESENTED ARE THE CONFIDENTIAL AND PROPRIETARY PROPERTY OF PCI INDUSTRIES AND MAY NOT BE DISCLOSED, LOANED, COPIED, OR USED FOR ANY PURPOSE OTHER THAN DESIGN REVIEW AND APPROVAL WITHOUT THE EXPRESS WRITTEN CONSENT OF PCI INDUSTRIES.

DRAWING DESCR: ELEVATION VIEWS, SINGLE SECTION ASSEMBLIES			
PROJECT: XAV-545 FEMA 361/320 GRILLE ASSEMBLY & INSTALLATION DETAILS			
LOCATION:			
CUSTOMER:			
PROJ. MGR: NATHAN WOODWORTH	DRAWN BY: LGH		
DATE: 12/14/2017	CHK'D BY: JG/nww	ORDER NUMBER	P.O. NUMBER
SHEET: 3 of 17	SCALE: NONE		DRAWING NUMBER
			M-60133 E-1

MULTI SECTION ASSEMBLIES



MULTI-SECTION WIDE (UNLIMITED) ARRANGEMENT
 AVAILABLE IN FLANGED TOP/BOTTOM OR
 NON-FLANGED CONFIGURATIONS ONLY
 FLANGED TOP/BOTTOM SHOWN, INTERNAL MOUNT, EXTERIOR VIEW
 NON-FLANGED SIMILAR

MULTI-SECTION HIGH (UNLIMITED) ARRANGEMENT
 AVAILABLE IN FLANGED JAMBS OR
 NON-FLANGED CONFIGURATIONS ONLY
 FLANGED JAMBS SHOWN, INTERNAL MOUNT, EXTERIOR VIEW
 NON-FLANGED SIMILAR

- NOTES:
 1. MULTI-SECTION CONFIGURATIONS ARE AVAILABLE ONLY IN MULTI-SECTION HIGH X SINGLE SECTION WIDE OR MULTI-SECTION WIDE X SINGLE SECTION HIGH. NO PROVISIONS HAVE BEEN MADE FOR MULTI-SECTION HIGH X MULTI-SECTION WIDE CONFIGURATIONS.

I:\Engineering Library\ECN-EIN\2018\ECN 18-0054 - Revise XAV-545 Installation Drawings\

REV. NO.	DESCRIPTION	DATE	DRAWN BY
D	ECN 18-0054	9/21/2018	LGH / NWW
C	REVISED STATIC PRESSURE TABLE	4/4/2018	JG
B	ECN 18-0011	3/01/2018	LGH
A	INITIAL RELEASE - ECN 17-0100	01/26/2018	LGH

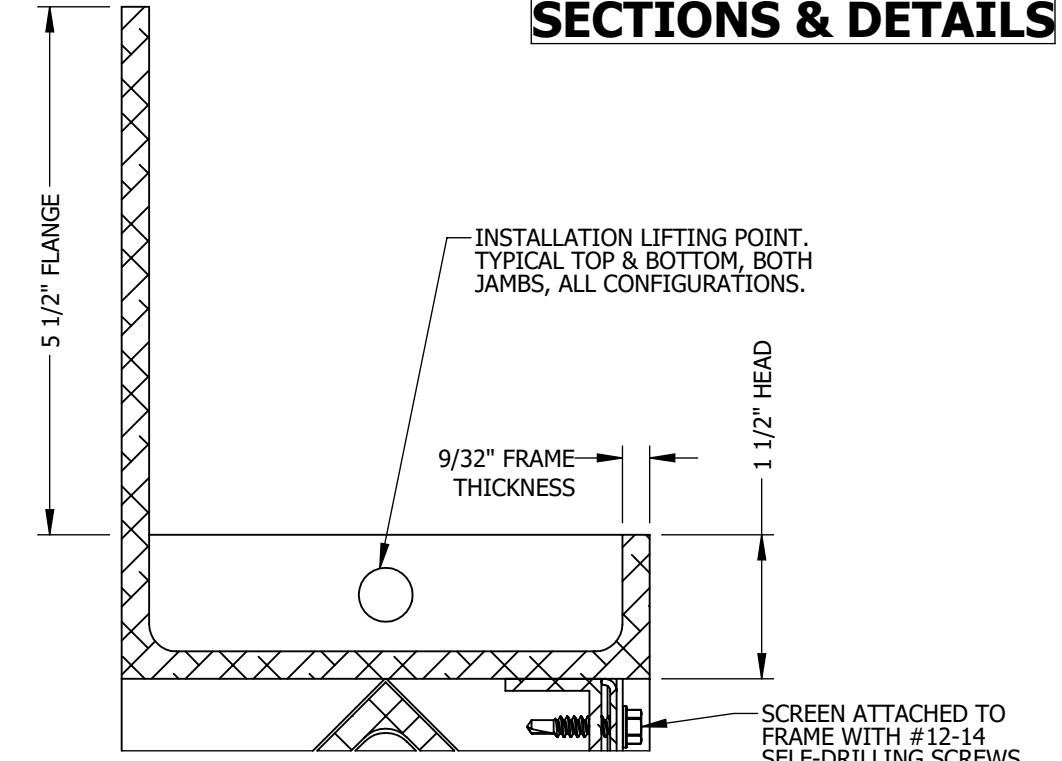
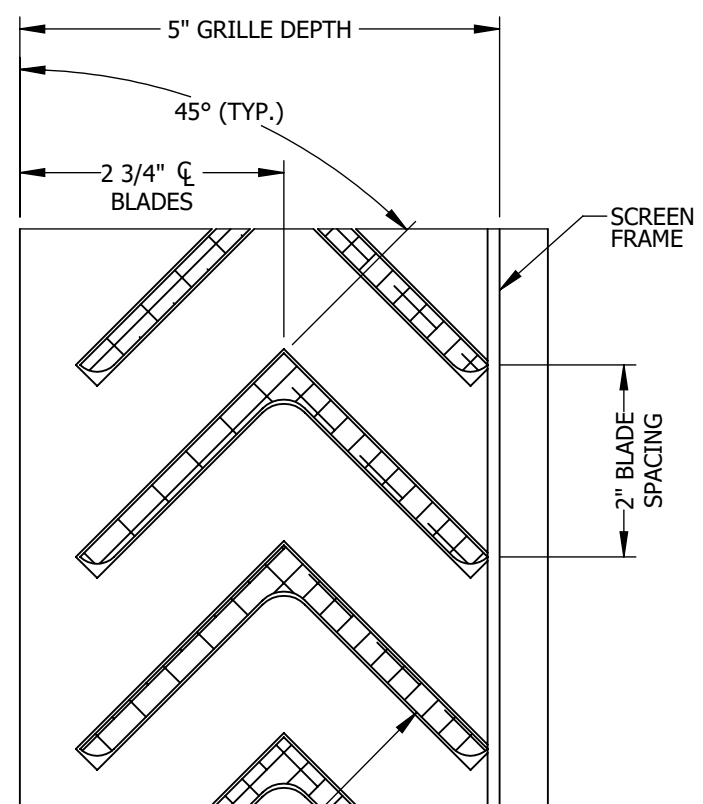
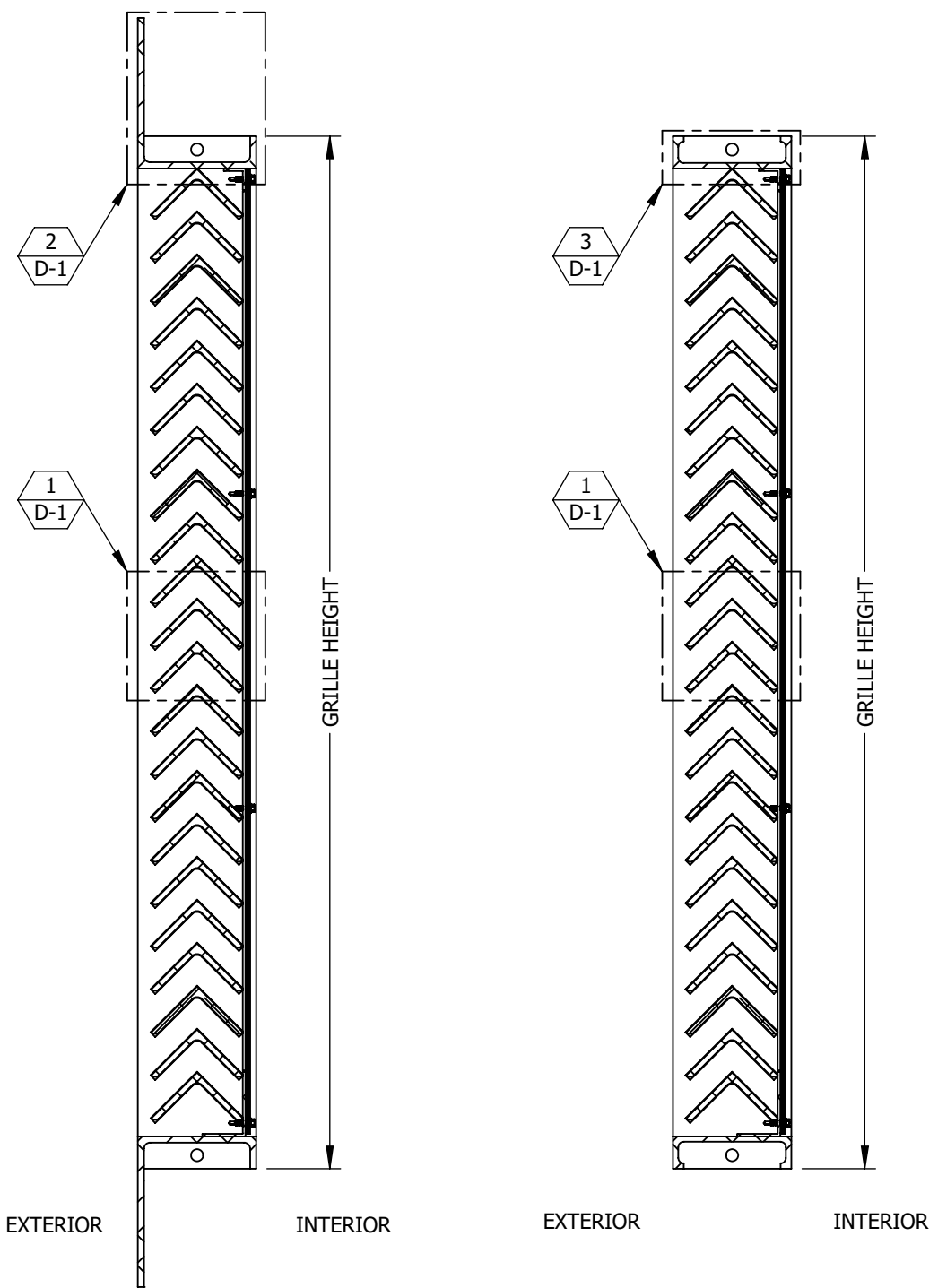
UNLESS OTHERWISE SPECIFIED DIMENSION ARE IN INCHES.
 TOLERANCE UNLESS NOTED:
 X.X ±0.060
 X.XX ±0.030
 X.XXX ±0.010
 ANGLE ±1°
 FRACTION ±1/16
 MAX HOLE BREAKOUT:
 15% OF MATERIAL THICKNESS

5101 Blue Mound Road
 Fort Worth, Texas 76106
 Phone: 817-509-2300
 Fax: 817-831-3110
 THIRD ANGLE PROJECTION

ALL-LITE
ARCHITECTURAL PRODUCTS
 THIS DRAWING AND THE DESIGN REPRESENTED ARE THE CONFIDENTIAL AND PROPRIETARY PROPERTY OF PCI INDUSTRIES AND MAY NOT BE DISCLOSED, LOANED, COPIED, OR USED FOR ANY PURPOSE OTHER THAN DESIGN REVIEW AND APPROVAL WITHOUT THE EXPRESS WRITTEN CONSENT OF PCI INDUSTRIES.

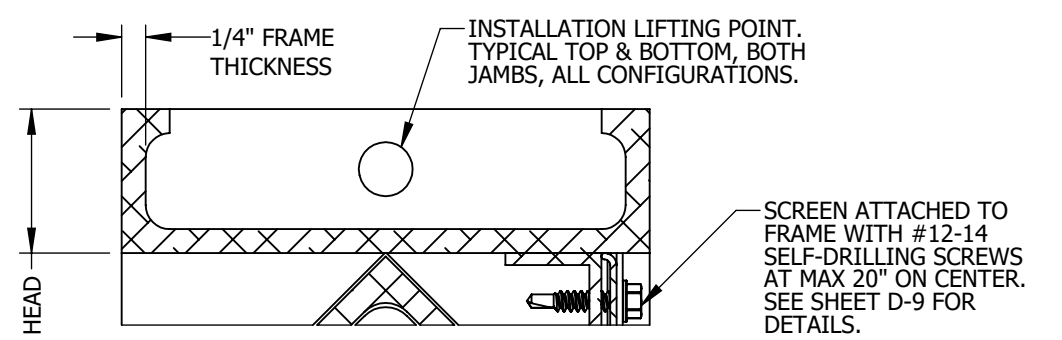
DRAWING DESCR: ELEVATION VIEWS, MULTIPLE SECTION ASSEMBLIES				
PROJECT: XAV-545 FEMA 361/320 GRILLE ASSEMBLY & INSTALLATION DETAILS				
LOCATION:				
CUSTOMER:				
PROJ. MGR: NATHAN WOODWORTH		DRAWN BY: LGH		
DATE: 12/14/2017	CHK'D BY: JG/nww	ORDER NUMBER	P.O. NUMBER	DRAWING NUMBER
SHEET: 4 of 17	SCALE: NONE			M-60133 E-2

SECTIONS & DETAILS



FLANGED TOP **2** DETAIL
SCALE: 6" = 1'-0" D-1 D-1

INTERNAL MOUNT TOP DETAIL SHOWN
EXTERNAL MOUNT HAS FLANGE OPPOSITE SIDE
FLANGED BOTTOM AND FLANGED JAMB DETAILS SIMILAR



NON-FLANGED TOP **3** DETAIL
SCALE: 6" = 1'-0" D-1 D-1

INTERNAL MOUNT HEAD DETAIL SHOWN
EXTERNAL MOUNT HAS FLANGE OPPOSITE SIDE
NON-FLANGED BOTTOM AND NON-FLANGED JAMB DETAILS SIMILAR

SECTION **A** VIEW
1-1/2" = 1'-0" D-1 E-1
INTERNAL MOUNT ARRANGEMENT SHOWN
EXTERNAL MOUNT HAS FLANGE OPPOSITE SIDE

SECTION **B** VIEW
1-1/2" = 1'-0" D-1 E-1
INTERNAL MOUNT ARRANGEMENT SHOWN
NON-FLANGED ARRANGEMENT SIMILAR
EXTERNAL MOUNT HAS FLANGE OPPOSITE SIDE

BLADE **1** DETAIL
SCALE: 6" = 1'-0" D-1 D-1

I:\Engineering Library\ECN-EIN\2018\ECN 18-0054 - Revise XAV-545 Installation Drawings\

REV. NO.	DESCRIPTION	DATE	DRAWN BY
D	ECN 18-0054	9/21/2018	LGH / NWW
C	REVISED STATIC PRESSURE TABLE	4/4/2018	JG
B	ECN 18-0011	3/01/2018	LGH
A	INITIAL RELEASE - ECN 17-0100	01/26/2018	LGH

UNLESS OTHERWISE SPECIFIED
DIMENSION ARE IN INCHES.

TOLERANCE UNLESS NOTED:
X.X ±0.060
X.XX ±0.030
X.XXX ±0.010
ANGLE ±1°
FRACTION ±1/16

MAX HOLE BREAKOUT:
15% OF MATERIAL THICKNESS

5101 Blue Mound Road
Fort Worth, Texas 76106
Phone: 817-509-2300
Fax: 817-831-3110

THIRD ANGLE PROJECTION

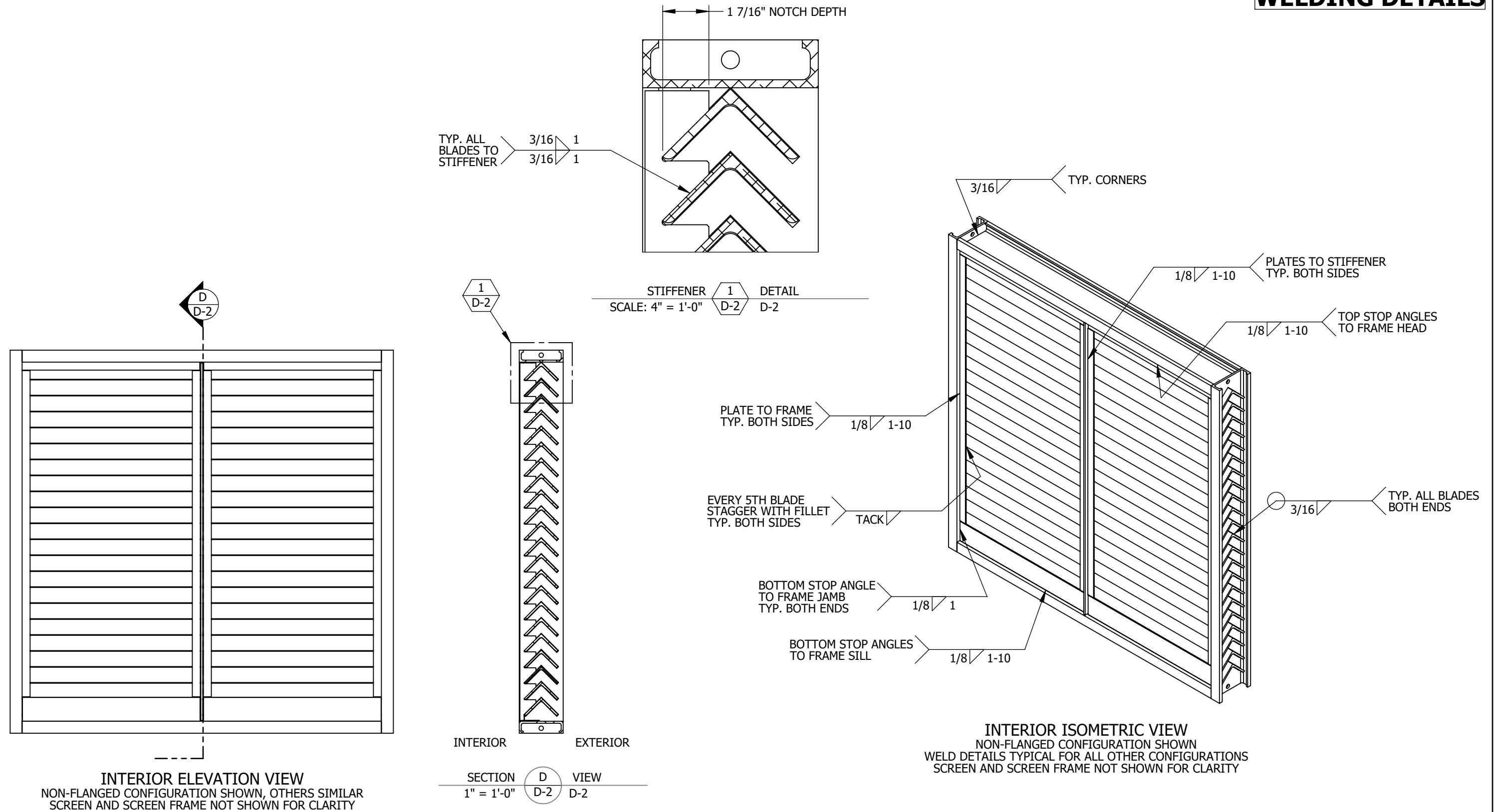
ALL-LITE

ARCHITECTURAL PRODUCTS

THIS DRAWING AND THE DESIGN REPRESENTED ARE THE CONFIDENTIAL AND PROPRIETARY PROPERTY OF PCI INDUSTRIES AND MAY NOT BE DISCLOSED, LOANED, COPIED, OR USED FOR ANY PURPOSE OTHER THAN DESIGN REVIEW AND APPROVAL WITHOUT THE EXPRESS WRITTEN CONSENT OF PCI INDUSTRIES.

DRAWING DESCR: SECTIONS & DETAILS				
PROJECT: XAV-545 FEMA 361/320 GRILLE ASSEMBLY & INSTALLATION DETAILS				
LOCATION:				
CUSTOMER:				
PROJ. MGR: NATHAN WOODWORTH		DRAWN BY: LGH		
DATE: 12/14/2017	CHK'D BY: JG/nww	ORDER NUMBER	P.O. NUMBER	DRAWING NUMBER
SHEET: 5 of 17	SCALE: AS NOTED			M-60133 D-1

WELDING DETAILS



I:\Engineering Library\ECN-EIN\2018\ECN 18-0054 - Revise XAV-545 Installation Drawings

REV. NO.	DESCRIPTION	DATE	DRAWN BY
D	ECN 18-0054	9/21/2018	LGH / NWW
C	REVISED STATIC PRESSURE TABLE	4/4/2018	JG
B	ECN 18-0011	3/01/2018	LGH
A	INITIAL RELEASE - ECN 17-0100	01/26/2018	LGH

UNLESS OTHERWISE SPECIFIED DIMENSION ARE IN INCHES.

TOLERANCE UNLESS NOTED:
 X.X ±0.060
 X.XX ±0.030
 X.XXX ±0.010
 ANGLE ±1°
 FRACTION ±1/16

MAX HOLE BREAKOUT:
 15% OF MATERIAL THICKNESS

5101 Blue Mound Road
 Fort Worth, Texas 76106
 Phone: 817-509-2300
 Fax: 817-831-3110

THIRD ANGLE PROJECTION

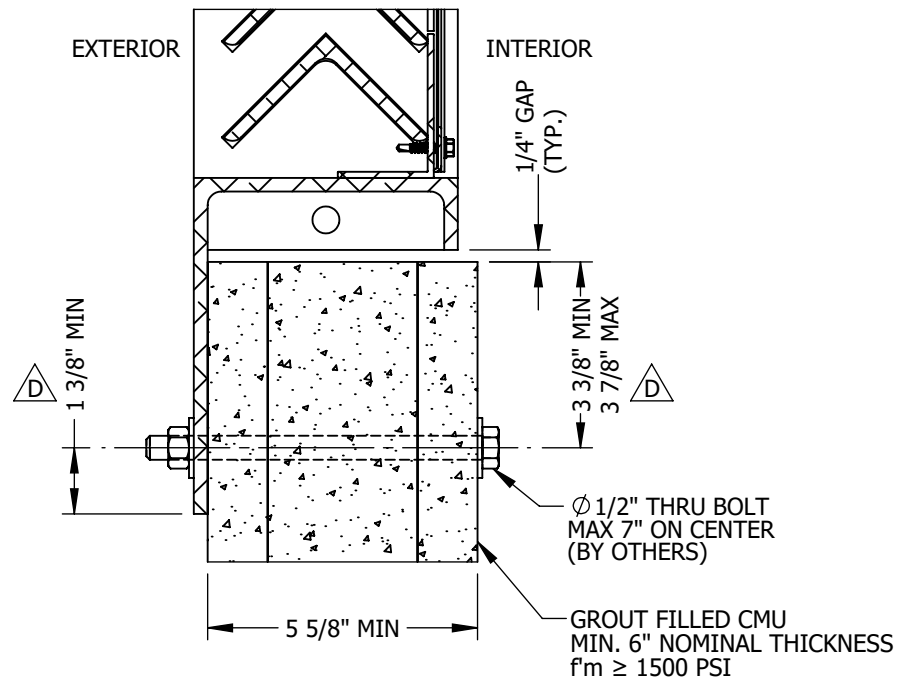
ALL-LITE

ARCHITECTURAL PRODUCTS

THIS DRAWING AND THE DESIGN REPRESENTED ARE THE CONFIDENTIAL AND PROPRIETARY PROPERTY OF PCI INDUSTRIES AND MAY NOT BE DISCLOSED, LOANED, COPIED, OR USED FOR ANY PURPOSE OTHER THAN DESIGN REVIEW AND APPROVAL WITHOUT THE EXPRESS WRITTEN CONSENT OF PCI INDUSTRIES.

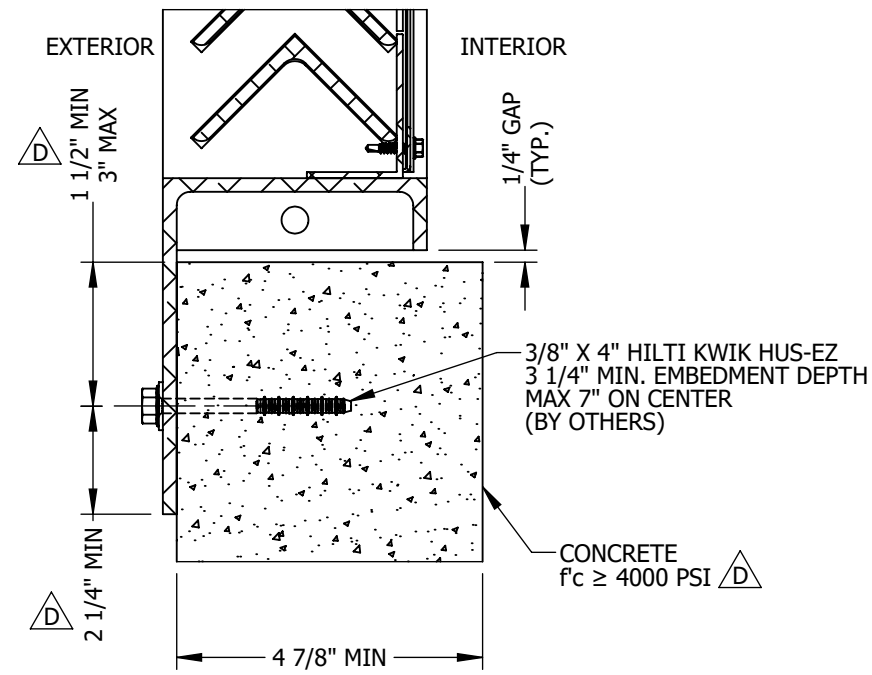
DRAWING DESCR: WELDING DETAILS D				
PROJECT: XAV-545 FEMA 361/320 GRILLE ASSEMBLY & INSTALLATION DETAILS				
LOCATION:				
CUSTOMER:				
PROJ. MGR: NATHAN WOODWORTH		DRAWN BY: LGH		
DATE: 12/14/2017	CHK'D BY: JG/nww	ORDER NUMBER	P.O. NUMBER	DRAWING NUMBER
SHEET: 6 of 17	SCALE: AS NOTED			M-60133 D-2

FLANGED TOP/BOTTOM INTERNAL MOUNT



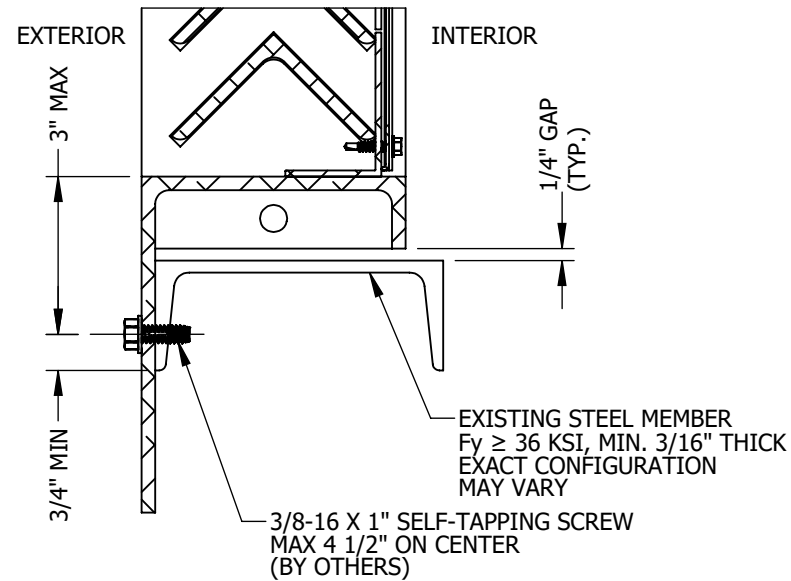
INSTALLATION DETAIL **1** GROUT FILLED CMU
SCALE: 3" = 1'-0" **D-3** INTERNAL MOUNT

FLANGED BOTTOM DETAIL SHOWN
TYPICAL FOR FLANGED TOP



INSTALLATION DETAIL **2** CONCRETE
SCALE: 3" = 1'-0" **D-3** INTERNAL MOUNT

FLANGED BOTTOM DETAIL SHOWN
TYPICAL FOR FLANGED TOP



INSTALLATION DETAIL **3** STRUCTURAL STEEL
SCALE: 3" = 1'-0" **D-3** INTERNAL MOUNT

FLANGED BOTTOM DETAIL SHOWN
TYPICAL FOR FLANGED TOP

- NOTES:
1. SEE SHEET D-11 FOR COMPREHENSIVE ANCHOR REQUIREMENT TABLE.
2. MAX ANCHOR DISTANCE FROM ENDS OF FLANGE = 1/2 x SPACING BETWEEN ANCHORS

I:\Engineering Library\ECN-EIN\2018\ECN 18-0054 - Revise XAV-545 Installation Drawings\

REV. NO.	DESCRIPTION	DATE	DRAWN BY
D	ECN 18-0054	9/21/2018	LGH / NWW
C	REVISED STATIC PRESSURE TABLE	4/4/2018	JG
B	ECN 18-0011	3/01/2018	LGH
A	INITIAL RELEASE - ECN 17-0100	01/26/2018	LGH

UNLESS OTHERWISE SPECIFIED
DIMENSION ARE IN INCHES.

TOLERANCE UNLESS NOTED:
X.X ±0.060
X.XX ±0.030
X.XXX ±0.010
ANGLE ±1°
FRACTION ±1/16

MAX HOLE BREAKOUT:
15% OF MATERIAL THICKNESS

5101 Blue Mound Road
Fort Worth, Texas 76106
Phone: 817-509-2300
Fax: 817-831-3110

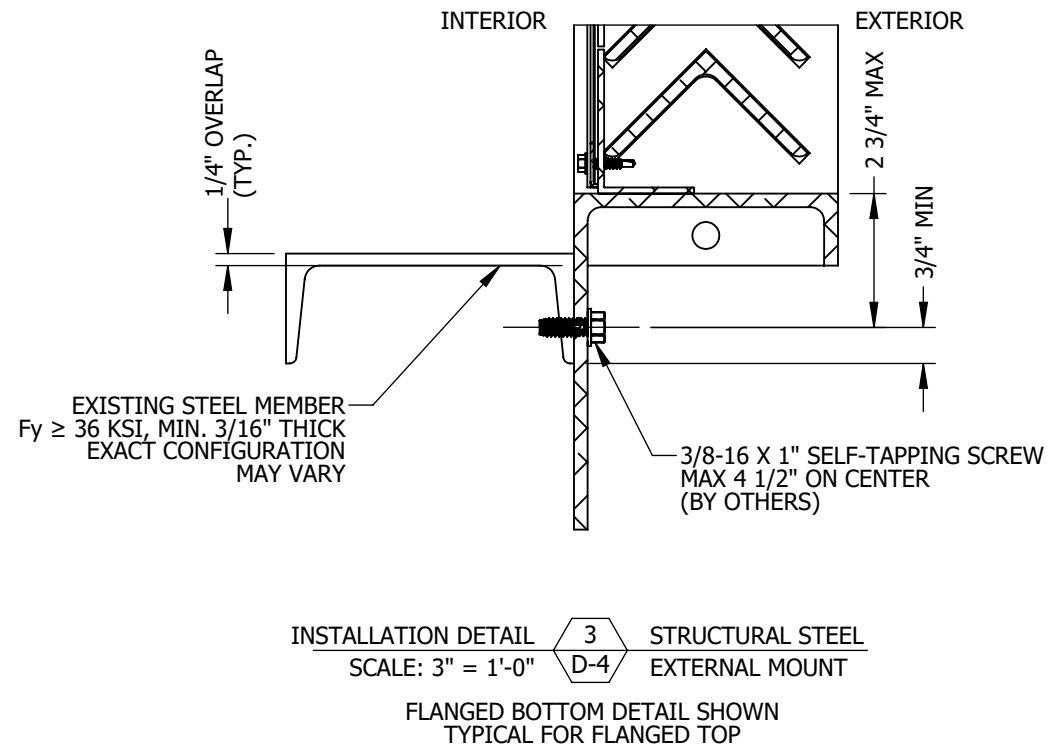
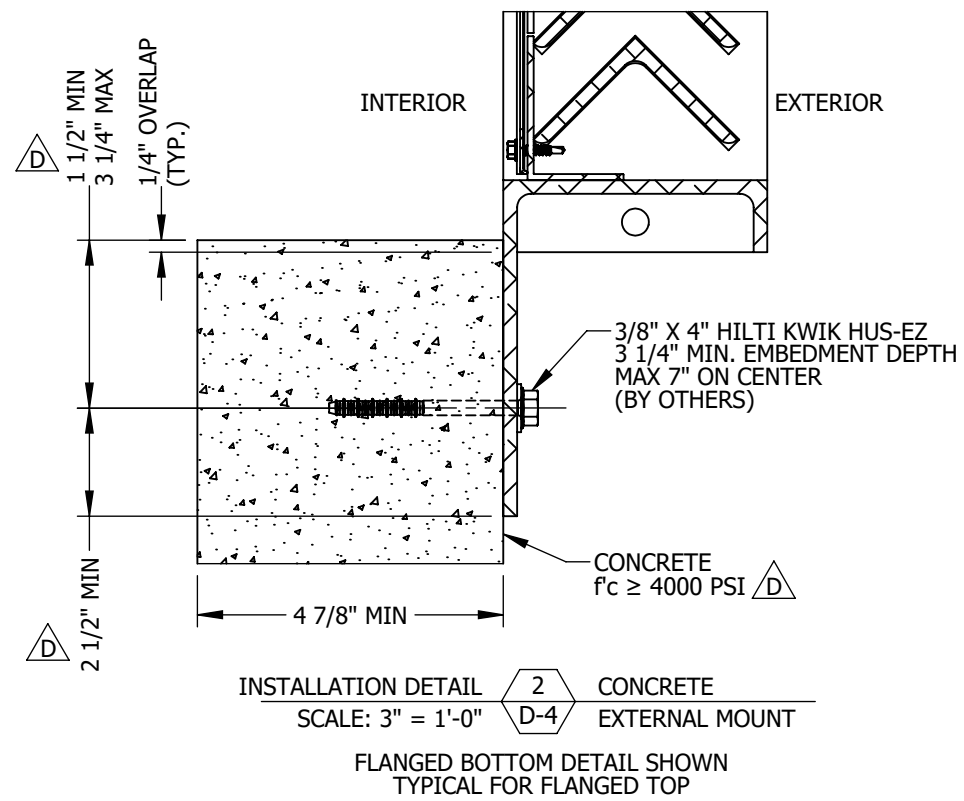
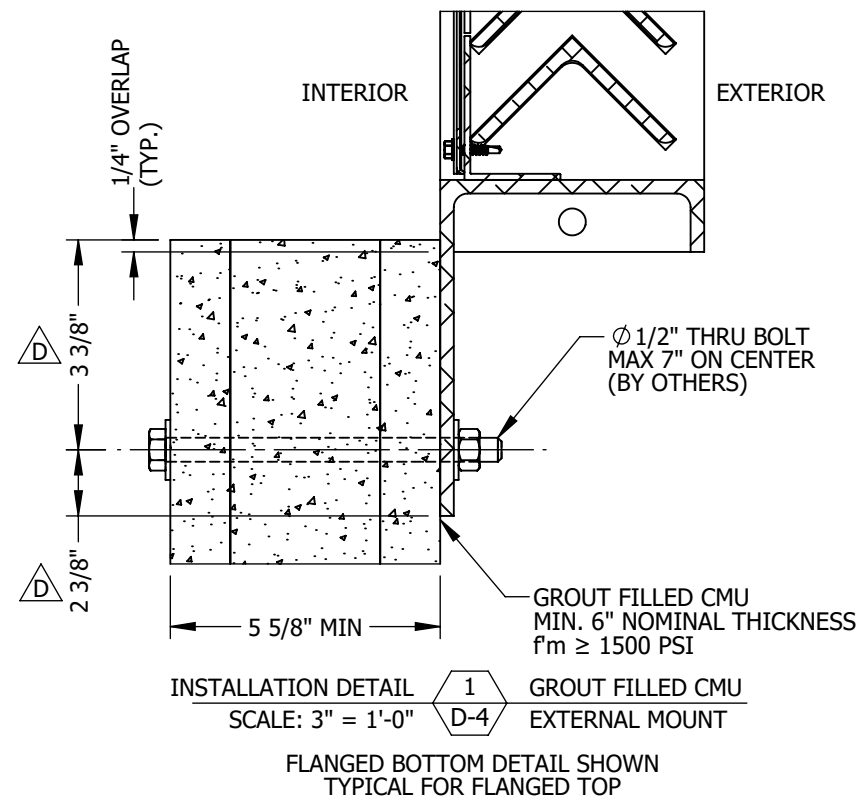
THIRD ANGLE PROJECTION

ALL-LITE
ARCHITECTURAL PRODUCTS

THIS DRAWING AND THE DESIGN REPRESENTED ARE THE CONFIDENTIAL AND PROPRIETARY PROPERTY OF PCI INDUSTRIES AND MAY NOT BE DISCLOSED, LOANED, COPIED, OR USED FOR ANY PURPOSE OTHER THAN DESIGN REVIEW AND APPROVAL WITHOUT THE EXPRESS WRITTEN CONSENT OF PCI INDUSTRIES.

DRAWING DESCR: INSTALLATION DETAILS, FLANGED TOP/BOTTOM, INTERNAL MOUNT				
PROJECT: XAV-545 FEMA 361/320 GRILLE ASSEMBLY & INSTALLATION DETAILS				
LOCATION:				
CUSTOMER:				
PROJ. MGR: NATHAN WOODWORTH		DRAWN BY: LGH		
DATE: 12/14/2017	CHK'D BY: JG/nww	ORDER NUMBER	P.O. NUMBER	DRAWING NUMBER
SHEET: 7 of 17	SCALE: AS NOTED			M-60133 D-3

FLANGED TOP/BOTTOM EXTERNAL MOUNT



- NOTES:
 1. SEE SHEET D-11 FOR COMPREHENSIVE ANCHOR REQUIREMENT TABLE.
 2. MAX ANCHOR DISTANCE FROM ENDS OF FLANGE = 1/2 x SPACING BETWEEN ANCHORS

I:\Engineering Library\ECN-EIN\2018\ECN 18-0054 - Revise XAV-545 Installation Drawings\

REV. NO.	DESCRIPTION	DATE	DRAWN BY
D	ECN 18-0054	9/21/2018	LGH / NWW
C	REVISED STATIC PRESSURE TABLE	4/4/2018	JG
B	ECN 18-0011	3/01/2018	LGH
A	INITIAL RELEASE - ECN 17-0100	01/26/2018	LGH

UNLESS OTHERWISE SPECIFIED
DIMENSION ARE IN INCHES.

TOLERANCE UNLESS NOTED:
 X.X ±0.060
 X.XX ±0.030
 X.XXX ±0.010
 ANGLE ±1°
 FRACTION ±1/16

MAX HOLE BREAKOUT:
15% OF MATERIAL THICKNESS

5101 Blue Mound Road
Fort Worth, Texas 76106
Phone: 817-509-2300
Fax: 817-831-3110

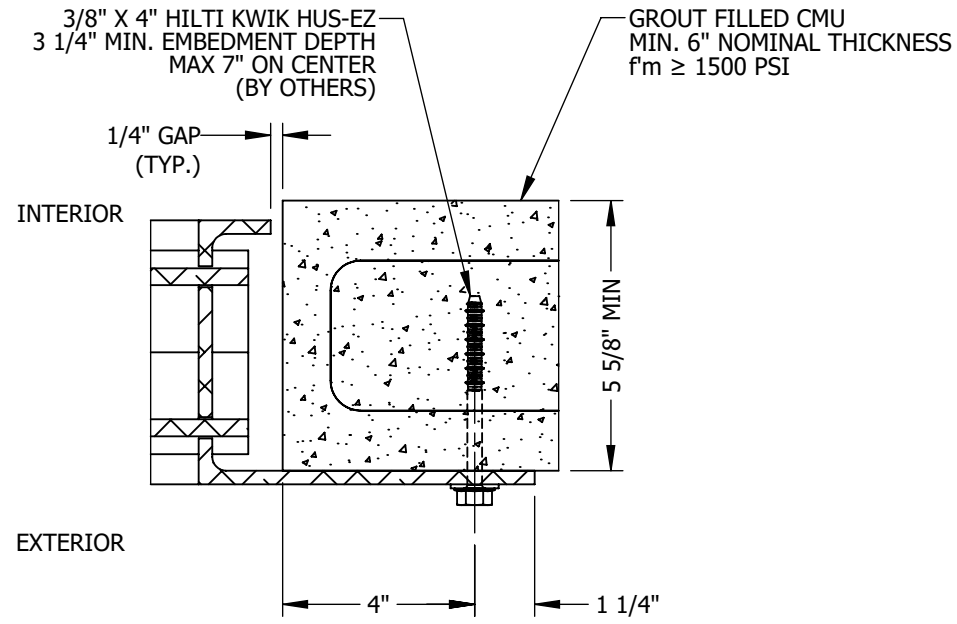
THIRD ANGLE PROJECTION

ALL-LITE
ARCHITECTURAL PRODUCTS

THIS DRAWING AND THE DESIGN REPRESENTED ARE THE CONFIDENTIAL AND PROPRIETARY PROPERTY OF PCI INDUSTRIES AND MAY NOT BE DISCLOSED, LOANED, COPIED, OR USED FOR ANY PURPOSE OTHER THAN DESIGN REVIEW AND APPROVAL WITHOUT THE EXPRESS WRITTEN CONSENT OF PCI INDUSTRIES.

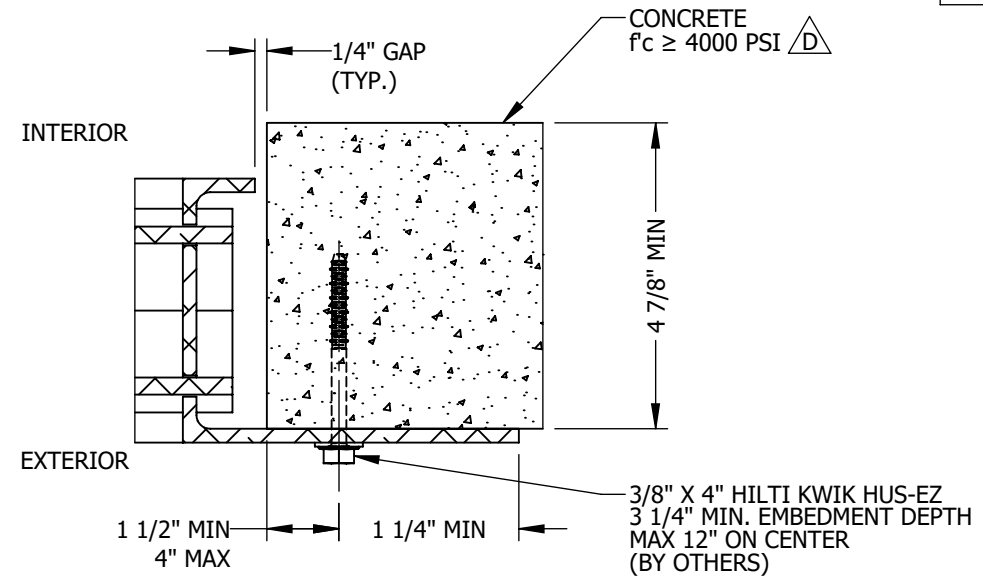
DRAWING DESCR: INSTALLATION DETAILS, FLANGED TOP/BOTTOM, EXTERNAL MOUNT				
PROJECT: XAV-545 FEMA 361/320 GRILLE ASSEMBLY & INSTALLATION DETAILS				
LOCATION:				
CUSTOMER:				
PROJ. MGR: NATHAN WOODWORTH		DRAWN BY: LGH		
DATE: 12/14/2017	CHK'D BY: JG/nww	ORDER NUMBER	P.O. NUMBER	DRAWING NUMBER
SHEET: 8 of 17	SCALE: AS NOTED			M-60133 D-4

FLANGED JAMBS INTERNAL MOUNT



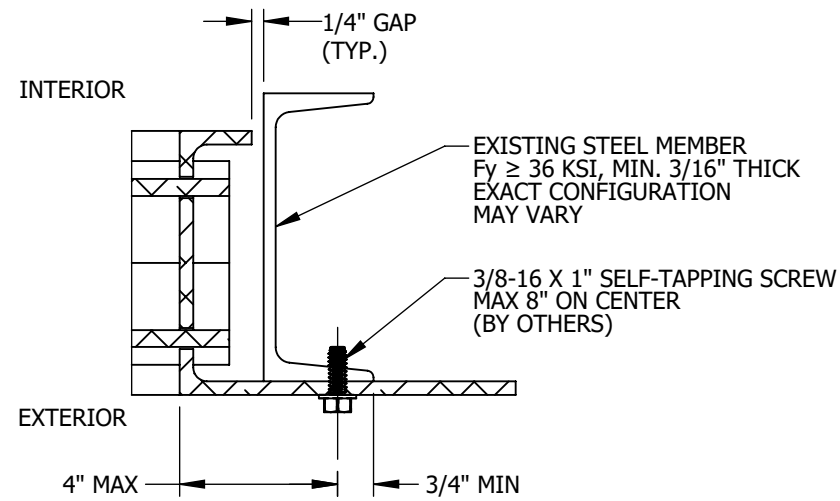
INSTALLATION DETAIL 1 GROUT FILLED CMU
SCALE: 3" = 1'-0" D-5 INTERNAL MOUNT

TYPICAL BOTH JAMBS



INSTALLATION DETAIL 2 CONCRETE
SCALE: 3" = 1'-0" D-5 INTERNAL MOUNT

TYPICAL BOTH JAMBS



INSTALLATION DETAIL 3 STRUCTURAL STEEL
SCALE: 3" = 1'-0" D-5 INTERNAL MOUNT

TYPICAL BOTH JAMBS

- NOTES:
 1. SEE SHEET D-11 FOR COMPREHENSIVE ANCHOR REQUIREMENT TABLE.
 2. MAX ANCHOR DISTANCE FROM ENDS OF FLANGE = 1/2 x SPACING BETWEEN ANCHORS

I:\Engineering Library\ECN-EIN\2018\ECN 18-0054 - Revise XAV-545 Installation Drawings\

REV. NO.	DESCRIPTION	DATE	DRAWN BY
D	ECN 18-0054	9/21/2018	LGH / NWW
C	REVISED STATIC PRESSURE TABLE	4/4/2018	JG
B	ECN 18-0011	3/01/2018	LGH
A	INITIAL RELEASE - ECN 17-0100	01/26/2018	LGH

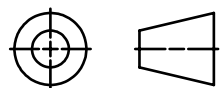
UNLESS OTHERWISE SPECIFIED
DIMENSION ARE IN INCHES.

TOLERANCE UNLESS NOTED:
 X.X ±0.060
 X.XX ±0.030
 X.XXX ±0.010
 ANGLE ±1°
 FRACTION ±1/16

MAX HOLE BREAKOUT:
15% OF MATERIAL THICKNESS

5101 Blue Mound Road
Fort Worth, Texas 76106
Phone: 817-509-2300
Fax: 817-831-3110

THIRD ANGLE PROJECTION



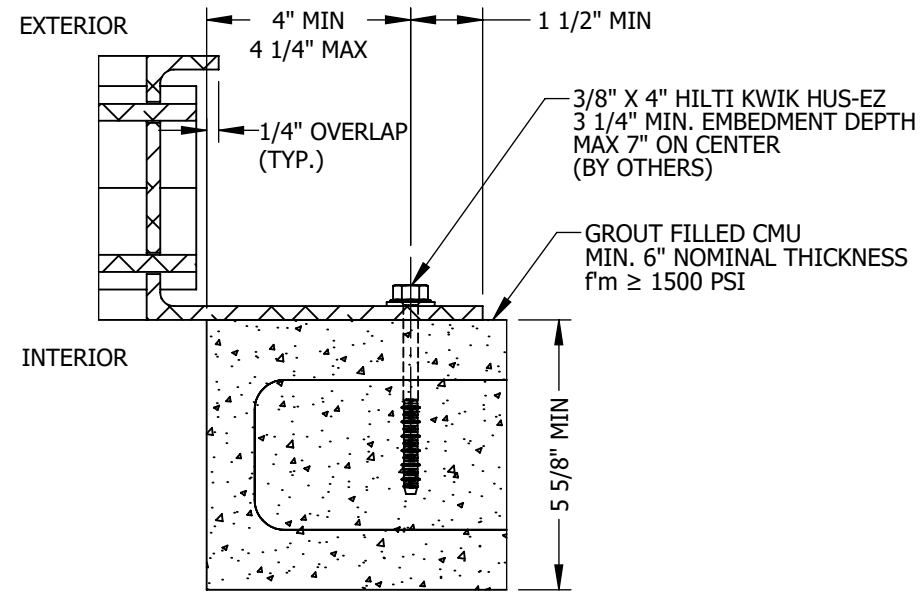
ALL-LITE

ARCHITECTURAL PRODUCTS

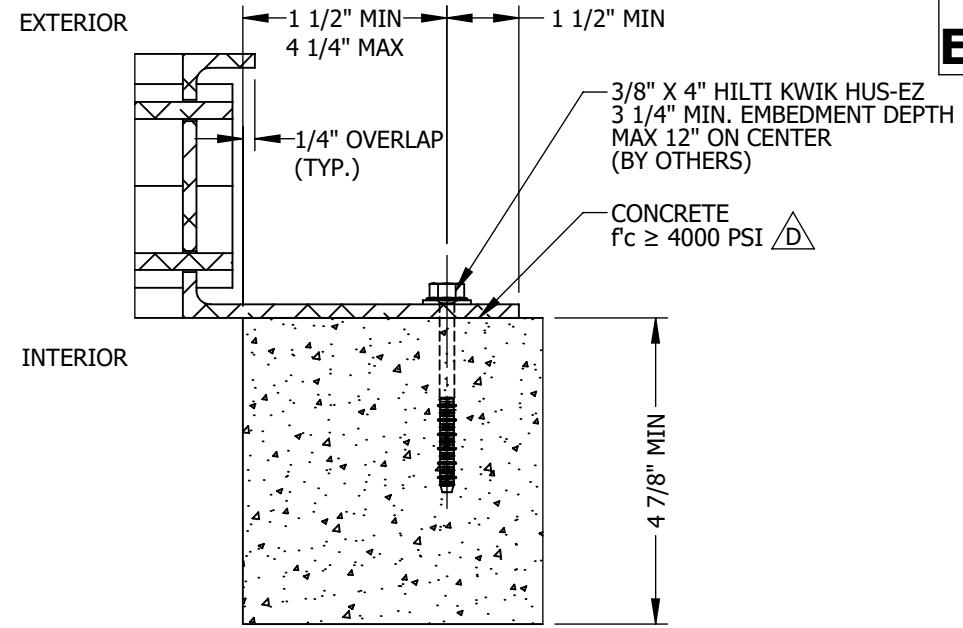
THIS DRAWING AND THE DESIGN REPRESENTED ARE THE CONFIDENTIAL AND PROPRIETARY PROPERTY OF PCI INDUSTRIES AND MAY NOT BE DISCLOSED, LOANED, COPIED, OR USED FOR ANY PURPOSE OTHER THAN DESIGN REVIEW AND APPROVAL WITHOUT THE EXPRESS WRITTEN CONSENT OF PCI INDUSTRIES.

DRAWING DESCR: INSTALLATION DETAILS, FLANGED JAMBS, INTERNAL MOUNT				
PROJECT: XAV-545 FEMA 361/320 GRILLE ASSEMBLY & INSTALLATION DETAILS				
LOCATION:				
CUSTOMER:				
PROJ. MGR: NATHAN WOODWORTH		DRAWN BY: LGH		
DATE: 12/14/2017	CHK'D BY: JG/nww	ORDER NUMBER	P.O. NUMBER	DRAWING NUMBER
SHEET: 9 of 17	SCALE: AS NOTED			M-60133 D-5

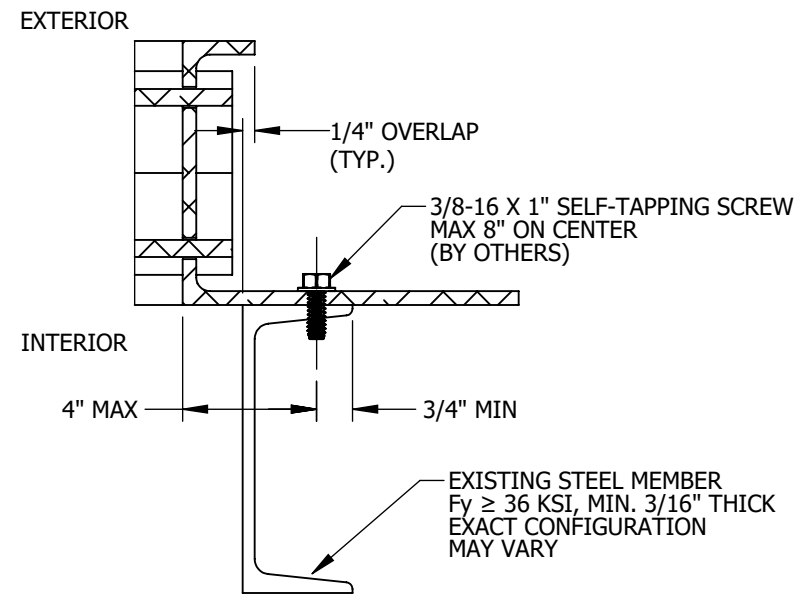
FLANGED JAMBS EXTERNAL MOUNT



INSTALLATION DETAIL **1** GROUT FILLED CMU
SCALE: 3" = 1'-0" **D-6** EXTERNAL MOUNT
TYPICAL BOTH JAMBS



INSTALLATION DETAIL **2** CONCRETE
SCALE: 3" = 1'-0" **D-6** EXTERNAL MOUNT
TYPICAL BOTH JAMBS



INSTALLATION DETAIL **3** STRUCTURAL STEEL
SCALE: 3" = 1'-0" **D-6** EXTERNAL MOUNT
TYPICAL BOTH JAMBS

- NOTES:
1. SEE SHEET D-11 FOR COMPREHENSIVE ANCHOR REQUIREMENT TABLE.
2. MAX ANCHOR DISTANCE FROM ENDS OF FLANGE = 1/2 x SPACING BETWEEN ANCHORS

I:\Engineering Library\ECN-EIN\2018\ECN 18-0054 - Revise XAV-545 Installation Drawings\

REV. NO.	DESCRIPTION	DATE	DRAWN BY
D	ECN 18-0054	9/21/2018	LGH / NWW
C	REVISED STATIC PRESSURE TABLE	4/4/2018	JG
B	ECN 18-0011	3/01/2018	LGH
A	INITIAL RELEASE - ECN 17-0100	01/26/2018	LGH

UNLESS OTHERWISE SPECIFIED
DIMENSION ARE IN INCHES.

TOLERANCE UNLESS NOTED:
X.X ±0.060
X.XX ±0.030
X.XXX ±0.010
ANGLE ±1°
FRACTION ±1/16

MAX HOLE BREAKOUT:
15% OF MATERIAL THICKNESS

5101 Blue Mound Road
Fort Worth, Texas 76106
Phone: 817-509-2300
Fax: 817-831-3110

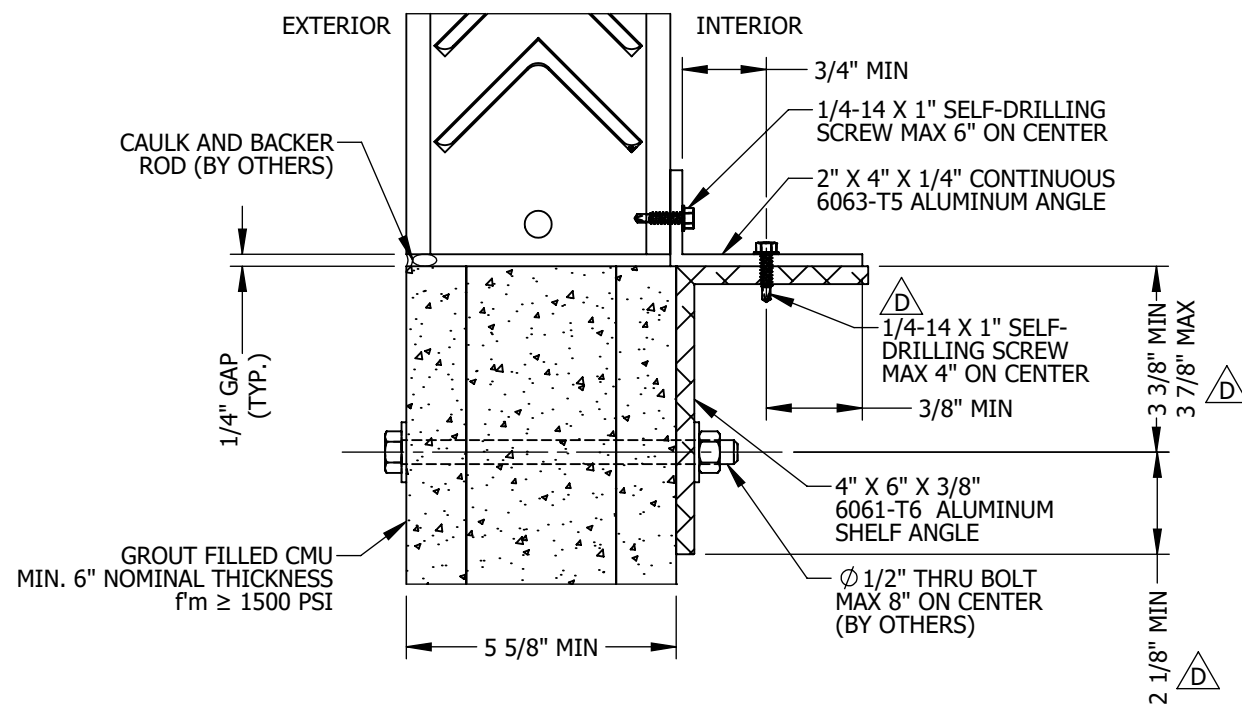
THIRD ANGLE PROJECTION

ALL-LITE
ARCHITECTURAL PRODUCTS

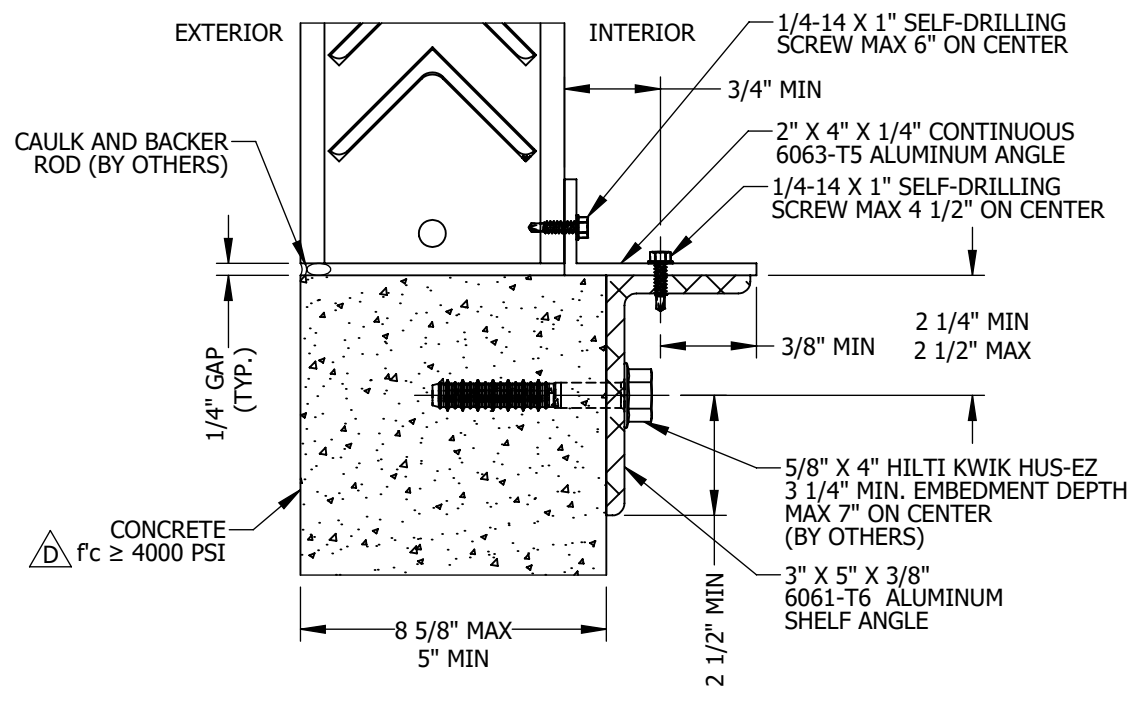
THIS DRAWING AND THE DESIGN REPRESENTED ARE THE CONFIDENTIAL AND PROPRIETARY PROPERTY OF PCI INDUSTRIES AND MAY NOT BE DISCLOSED, LOANED, COPIED, OR USED FOR ANY PURPOSE OTHER THAN DESIGN REVIEW AND APPROVAL WITHOUT THE EXPRESS WRITTEN CONSENT OF PCI INDUSTRIES.

DRAWING DESCR: INSTALLATION DETAILS, FLANGED JAMBS, EXTERNAL MOUNT				
PROJECT: XAV-545 FEMA 361/320 GRILLE ASSEMBLY & INSTALLATION DETAILS				
LOCATION:				
CUSTOMER:				
PROJ. MGR: NATHAN WOODWORTH		DRAWN BY: LGH		
DATE: 12/14/2017	CHK'D BY: JG/nww	ORDER NUMBER	P.O. NUMBER	DRAWING NUMBER
SHEET: 10 of 17	SCALE: AS NOTED			M-60133 D-6

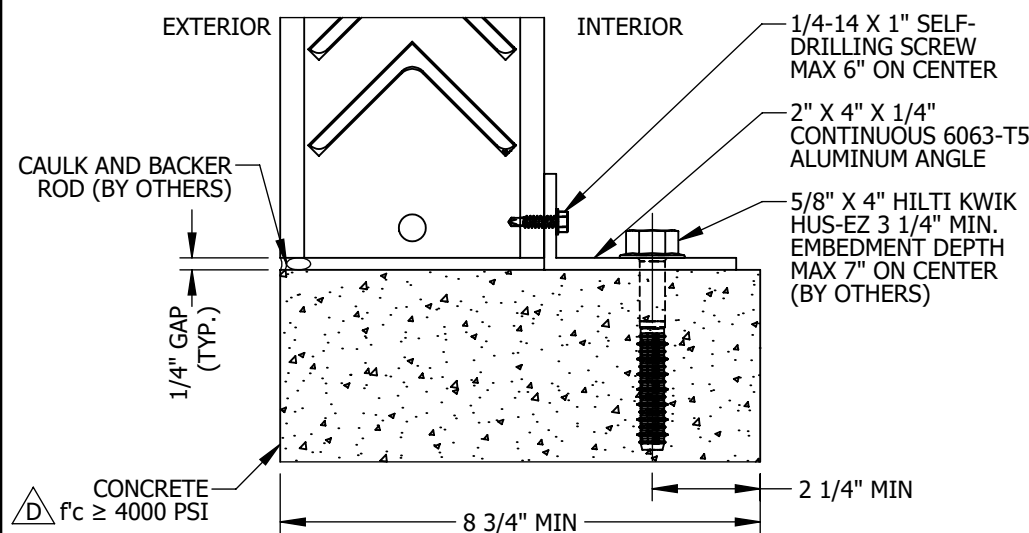
**NON-FLANGED
TOP/BOTTOM**



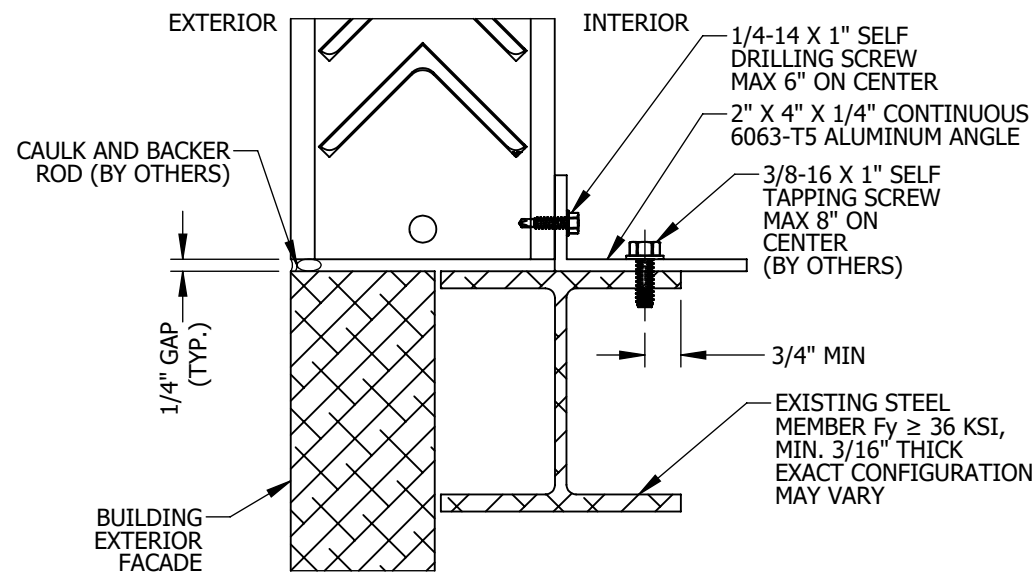
INSTALLATION DETAIL 1 GROUT FILLED CMU
SCALE: 3" = 1'-0" D-7 NON-FLANGED
NON-FLANGED BOTTOM DETAIL SHOWN
TYPICAL FOR NON-FLANGED TOP



INSTALLATION DETAIL 2 CONCRETE < 8 3/4"
SCALE: 3" = 1'-0" D-7 NON-FLANGED
NON-FLANGED BOTTOM DETAIL SHOWN
TYPICAL FOR NON-FLANGED TOP



INSTALLATION DETAIL 3 CONCRETE ≥ 8 3/4"
SCALE: 3" = 1'-0" D-7 NON-FLANGED
NON-FLANGED BOTTOM DETAIL SHOWN
TYPICAL FOR NON-FLANGED TOP



INSTALLATION DETAIL 4 STRUCTURAL STEEL
SCALE: 3" = 1'-0" D-7 NON-FLANGED
NON-FLANGED BOTTOM DETAIL SHOWN
TYPICAL FOR NON-FLANGED TOP

- NOTES:
1. SEE SHEET D-11 FOR COMPREHENSIVE ANCHOR REQUIREMENT TABLE.
2. MAX ANCHOR DISTANCE FROM ENDS OF FLANGE = 1/2 x SPACING BETWEEN ANCHORS

I:\Engineering Library\ECN-EIN\2018\ECN 18-0054 - Revise XAV-545 Installation Drawings\

REV. NO.	DESCRIPTION	DATE	DRAWN BY
D	ECN 18-0054	9/21/2018	LGH / NWW
C	REVISED STATIC PRESSURE TABLE	4/4/2018	JG
B	ECN 18-0011	3/01/2018	LGH
A	INITIAL RELEASE - ECN 17-0100	01/26/2018	LGH

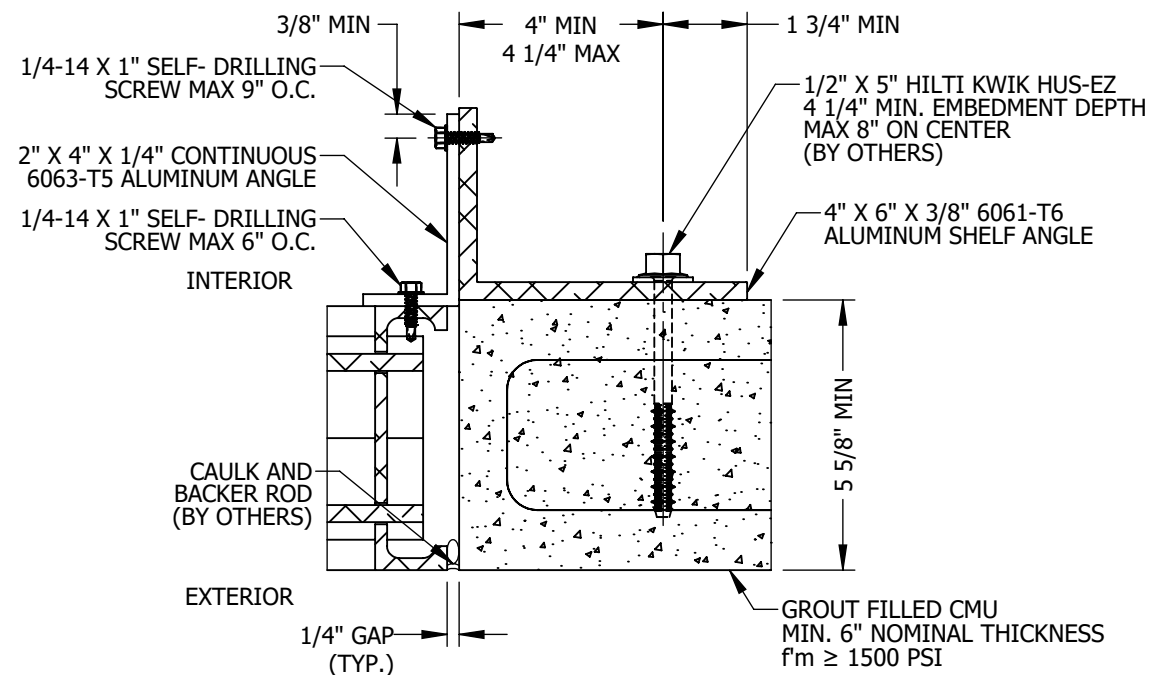
UNLESS OTHERWISE SPECIFIED DIMENSION ARE IN INCHES.
TOLERANCE UNLESS NOTED:
X.X ±0.060
X.XX ±0.030
X.XXX ±0.010
ANGLE ±1°
FRACTION ±1/16
MAX HOLE BREAKOUT:
15% OF MATERIAL THICKNESS

5101 Blue Mound Road
Fort Worth, Texas 76106
Phone: 817-509-2300
Fax: 817-831-3110
THIRD ANGLE PROJECTION

ALL-LITE
ARCHITECTURAL PRODUCTS
THIS DRAWING AND THE DESIGN REPRESENTED ARE THE CONFIDENTIAL AND PROPRIETARY PROPERTY OF PCI INDUSTRIES AND MAY NOT BE DISCLOSED, LOANED, COPIED, OR USED FOR ANY PURPOSE OTHER THAN DESIGN REVIEW AND APPROVAL WITHOUT THE EXPRESS WRITTEN CONSENT OF PCI INDUSTRIES.

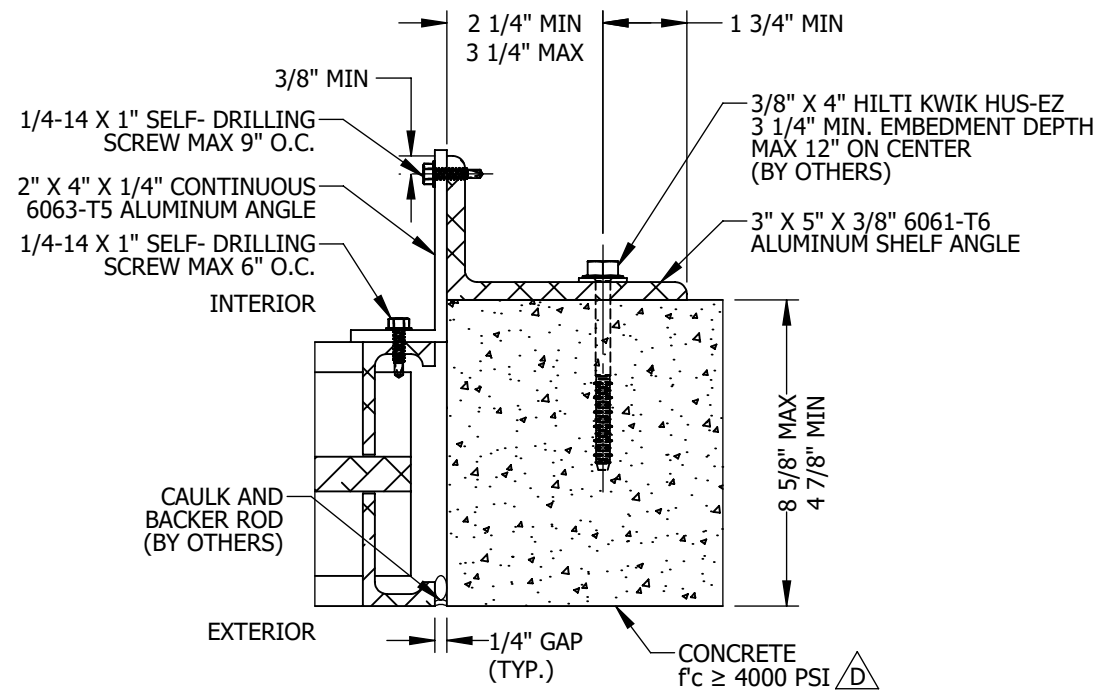
DRAWING DESCR: INSTALLATION DETAILS, NON-FLANGED TOP/BOTTOM				
PROJECT: XAV-545 FEMA 361/320 GRILLE ASSEMBLY & INSTALLATION DETAILS				
LOCATION:				
CUSTOMER:				
PROJ. MGR: NATHAN WOODWORTH		DRAWN BY: LGH		
DATE: 12/14/2017	CHK'D BY: JG/nww	ORDER NUMBER	P.O. NUMBER	DRAWING NUMBER
SHEET: 11 of 17	SCALE: AS NOTED			M-60133 D-7

NON-FLANGED JAMBS



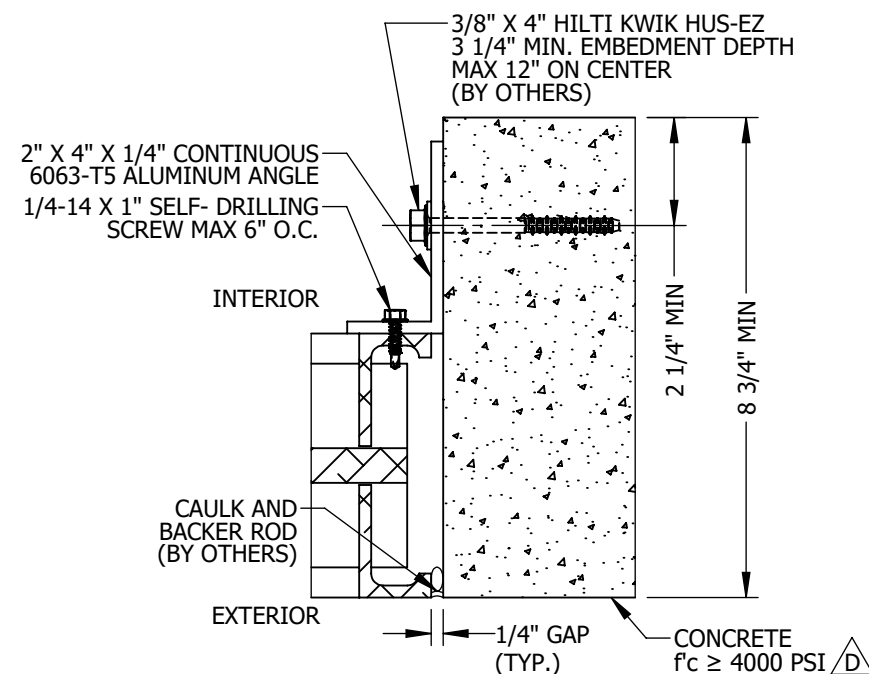
INSTALLATION DETAIL 1
SCALE: 3" = 1'-0" D-8
GROUT FILLED CMU
NON-FLANGED

TYPICAL BOTH JAMBS



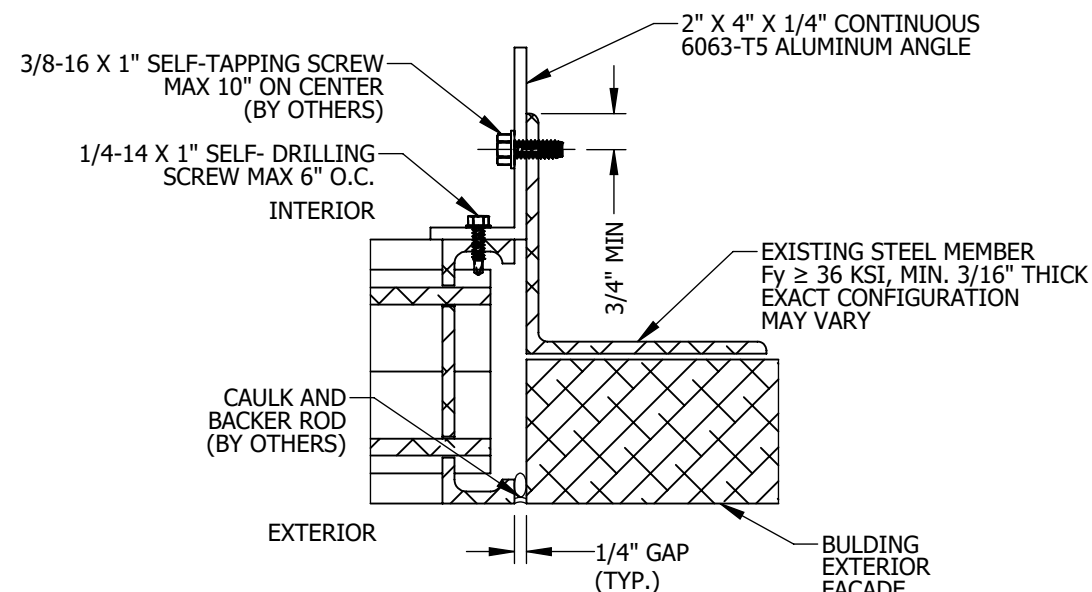
INSTALLATION DETAIL 2
SCALE: 3" = 1'-0" D-8
CONCRETE < 8 3/4"
NON-FLANGED

TYPICAL BOTH JAMBS



INSTALLATION DETAIL 3
SCALE: 3" = 1'-0" D-8
CONCRETE ≥ 8 3/4"
NON-FLANGED

TYPICAL BOTH JAMBS



INSTALLATION DETAIL 4
SCALE: 3" = 1'-0" D-8
STRUCTURAL STEEL
NON-FLANGED

TYPICAL BOTH JAMBS

- NOTES:
1. SEE SHEET D-11 FOR COMPREHENSIVE ANCHOR REQUIREMENT TABLE.
2. MAX ANCHOR DISTANCE FROM ENDS OF FLANGE = 1/2 x SPACING BETWEEN ANCHORS

I:\Engineering Library\ECN-EIN\2018\ECN 18-0054 - Revise XAV-545 Installation Drawings\

REV. NO.	DESCRIPTION	DATE	DRAWN BY
D	ECN 18-0054	9/21/2018	LGH / NWW
C	REVISED STATIC PRESSURE TABLE	4/4/2018	JG
B	ECN 18-0011	3/01/2018	LGH
A	INITIAL RELEASE - ECN 17-0100	01/26/2018	LGH

UNLESS OTHERWISE SPECIFIED DIMENSION ARE IN INCHES.
TOLERANCE UNLESS NOTED:
X.X ±0.060
X.XX ±0.030
X.XXX ±0.010
ANGLE ±1°
FRACTION ±1/16
MAX HOLE BREAKOUT:
15% OF MATERIAL THICKNESS

5101 Blue Mound Road
Fort Worth, Texas 76106
Phone: 817-509-2300
Fax: 817-831-3110
THIRD ANGLE PROJECTION

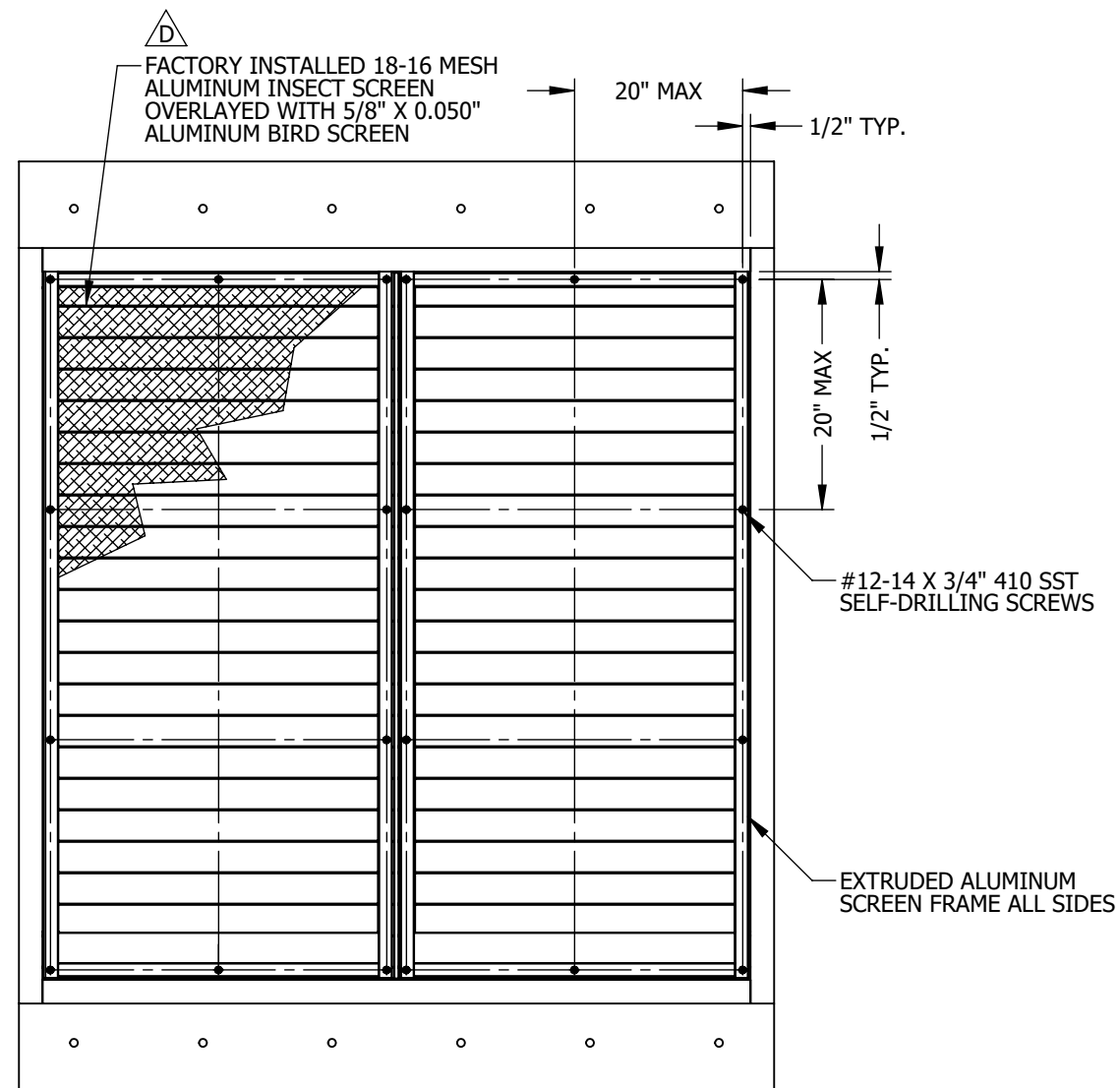
ALL-LITE

ARCHITECTURAL PRODUCTS

THIS DRAWING AND THE DESIGN REPRESENTED ARE THE CONFIDENTIAL AND PROPRIETARY PROPERTY OF PCI INDUSTRIES AND MAY NOT BE DISCLOSED, LOANED, COPIED, OR USED FOR ANY PURPOSE OTHER THAN DESIGN REVIEW AND APPROVAL WITHOUT THE EXPRESS WRITTEN CONSENT OF PCI INDUSTRIES.

DRAWING DESCR: INSTALLATION DETAILS, NON-FLANGED JAMBS				
PROJECT: XAV-545 FEMA 361/320 GRILLE ASSEMBLY & INSTALLATION DETAILS				
LOCATION:				
CUSTOMER:				
PROJ. MGR: NATHAN WOODWORTH		DRAWN BY: LGH		
DATE: 12/14/2017	CHK'D BY: JG/nww	ORDER NUMBER	P.O. NUMBER	DRAWING NUMBER
SHEET: 12 of 17	SCALE: AS NOTED			M-60133 D-8

SCREEN INSTALLATION



SCREEN INSTALLATION
 INTERIOR VIEW
 TOP/BOTTOM FLANGED CONFIGURATION SHOWN
 OTHER CONFIGURATIONS SIMILAR
 SCREEN IS ALWAYS TO INTERIOR SIDE, REGARDLESS OF CONFIGURATION

I:\Engineering Library\ECN-EIN\2018\ECN 18-0054 - Revise XAV-545 Installation Drawings\

REV. NO.	DESCRIPTION	DATE	DRAWN BY
D	ECN 18-0054	9/21/2018	LGH / NWW
C	REVISED STATIC PRESSURE TABLE	4/4/2018	JG
B	ECN 18-0011	3/01/2018	LGH
A	INITIAL RELEASE - ECN 17-0100	01/26/2018	LGH

UNLESS OTHERWISE SPECIFIED DIMENSION ARE IN INCHES.

TOLERANCE UNLESS NOTED:
 X.X ±0.060
 X.XX ±0.030
 X.XXX ±0.010
 ANGLE ±1°
 FRACTION ±1/16

MAX HOLE BREAKOUT:
 15% OF MATERIAL THICKNESS

5101 Blue Mound Road
 Fort Worth, Texas 76106
 Phone: 817-509-2300
 Fax: 817-831-3110

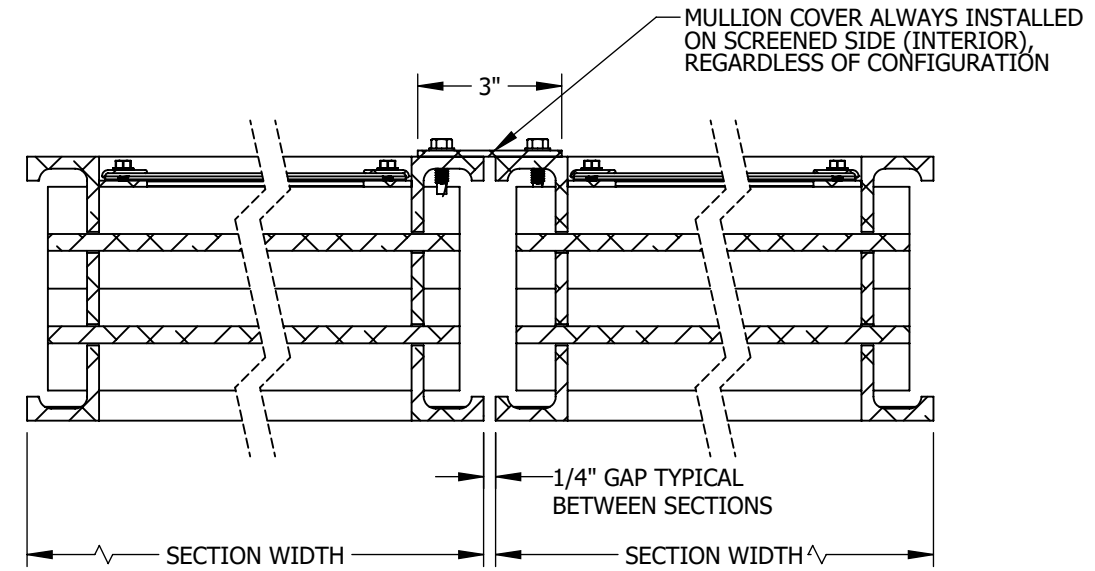
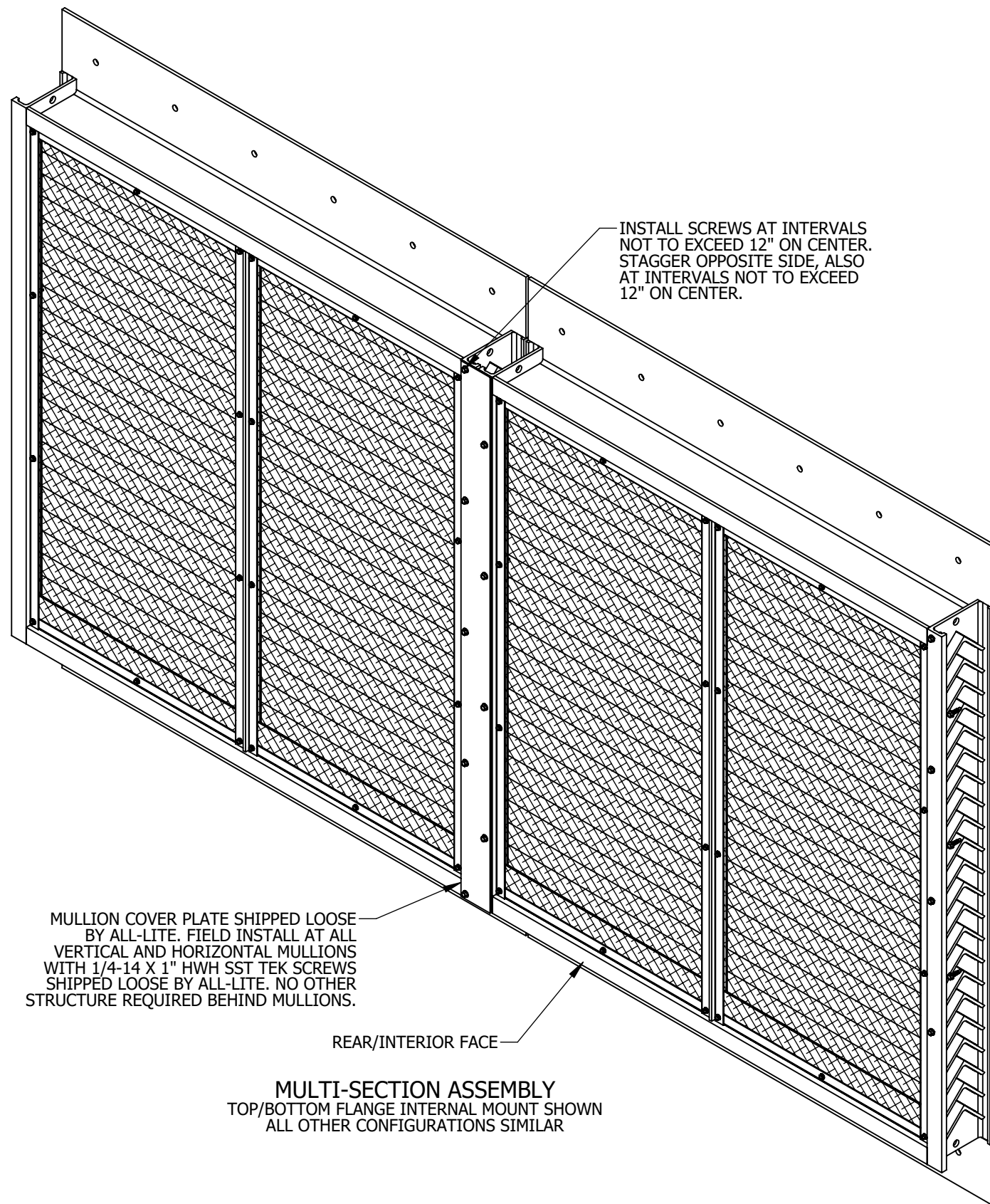
THIRD ANGLE PROJECTION

ALL-LITE
ARCHITECTURAL PRODUCTS

THIS DRAWING AND THE DESIGN REPRESENTED ARE THE CONFIDENTIAL AND PROPRIETARY PROPERTY OF PCI INDUSTRIES AND MAY NOT BE DISCLOSED, LOANED, COPIED, OR USED FOR ANY PURPOSE OTHER THAN DESIGN REVIEW AND APPROVAL WITHOUT THE EXPRESS WRITTEN CONSENT OF PCI INDUSTRIES.

DRAWING DESCR: SCREEN INSTALLATION DETAILS			
PROJECT: XAV-545 FEMA 361/320 GRILLE ASSEMBLY & INSTALLATION DETAILS			
LOCATION:			
CUSTOMER:			
PROJ. MGR: NATHAN WOODWORTH	DRAWN BY: LGH		
DATE: 12/14/2017	CHK'D BY: JG/nww	ORDER NUMBER	P.O. NUMBER
SHEET: 13 of 17	SCALE: 1"=1'0"		DRAWING NUMBER
			M-60133 D-9

MULLION COVER INSTALLATION



SECTION VIEW C MULLION INSTALLATION
 3" = 1'-0" D-10 E-2

HORIZONTAL SECTION SHOWN
 VERTICAL SECTION SIMILAR

MULLION COVER PLATE SHIPPED LOOSE BY ALL-LITE. FIELD INSTALL AT ALL VERTICAL AND HORIZONTAL MULLIONS WITH 1/4-14 X 1" HWH SST TEK SCREWS SHIPPED LOOSE BY ALL-LITE. NO OTHER STRUCTURE REQUIRED BEHIND MULLIONS.

REAR/INTERIOR FACE

MULTI-SECTION ASSEMBLY
 TOP/BOTTOM FLANGE INTERNAL MOUNT SHOWN
 ALL OTHER CONFIGURATIONS SIMILAR

I:\Engineering Library\ECN-EIN\2018\ECN 18-0054 - Revise XAV-545 Installation Drawings\

REV. NO.	DESCRIPTION	DATE	DRAWN BY
D	ECN 18-0054	9/21/2018	LGH / NWW
C	REVISED STATIC PRESSURE TABLE	4/4/2018	JG
B	ECN 18-0011	3/01/2018	LGH
A	INITIAL RELEASE - ECN 17-0100	01/26/2018	LGH

UNLESS OTHERWISE SPECIFIED DIMENSION ARE IN INCHES.

TOLERANCE UNLESS NOTED:
 X.X ±0.060
 X.XX ±0.030
 X.XXX ±0.010
 ANGLE ±1°
 FRACTION ±1/16

MAX HOLE BREAKOUT:
 15% OF MATERIAL THICKNESS

5101 Blue Mound Road
 Fort Worth, Texas 76106
 Phone: 817-509-2300
 Fax: 817-831-3110

THIRD ANGLE PROJECTION

ALL-LITE
ARCHITECTURAL PRODUCTS

THIS DRAWING AND THE DESIGN REPRESENTED ARE THE CONFIDENTIAL AND PROPRIETARY PROPERTY OF PCI INDUSTRIES AND MAY NOT BE DISCLOSED, LOANED, COPIED, OR USED FOR ANY PURPOSE OTHER THAN DESIGN REVIEW AND APPROVAL WITHOUT THE EXPRESS WRITTEN CONSENT OF PCI INDUSTRIES.

DRAWING DESCR: MULLION COVER INSTALLATION DETAILS				
PROJECT: XAV-545 FEMA 361/320 GRILLE ASSEMBLY & INSTALLATION DETAILS				
LOCATION:				
CUSTOMER:				
PROJ. MGR: NATHAN WOODWORTH		DRAWN BY: LGH		
DATE: 12/14/2017	CHK'D BY: JG/nww	ORDER NUMBER	P.O. NUMBER	DRAWING NUMBER
SHEET: 14 of 17	SCALE: 1"=10"			M-60133 D-10

ANCHOR REQUIREMENTS

TABLE 3: XAV-545 ANCHOR REQUIREMENTS \triangle

ATTACHMENT METHOD	ATTACHMENT LOCATION	BUILDING SUBSTRATE	ANCHOR TYPE	MIN EDGE DISTANCE	MAX SPACING	MIN EMBEDMENT DEPTH
FLANGE-MOUNTED (INTERNAL OR EXTERNAL MOUNT)	JAMBS	GROUT-FILLED CMU ($f'_m \geq 1500$ PSI)	3/8" X 4" HILTI KWIK HUS-EZ SCREW ANCHOR	4"	7"	3 1/4"
		CONCRETE ($f'_c \geq 4000$ PSI)	3/8" X 4" HILTI KWIK HUS-EZ SCREW ANCHOR	1 1/2"	12"	3 1/4"
		STEEL (MIN 3/16" THICK, $F_y \geq 36$ KSI)	3/8" X 1" SELF TAPPING SCREW*	3/4"	8"	3/16"
	TOP & BOTTOM	GROUT-FILLED CMU ($f'_m \geq 1500$ PSI)	1/2" THROUGH-BOLT W/ NUT & FLAT WASHER	3 3/8"	7"	FULL
		CONCRETE ($f'_c \geq 4000$ PSI)	3/8" X 4" HILTI KWIK HUS-EZ SCREW ANCHOR	1 1/2"	7"	3 1/4"
		STEEL (MIN 3/16" THICK, $F_y \geq 36$ KSI)	3/8" X 1" SELF TAPPING SCREW*	3/4"	4 1/2"	3/16"
CONTINUOUS ANGLES (NON-FLANGED, INTERNAL MOUNT ONLY)	JAMBS	GROUT-FILLED CMU ($f'_m \geq 1500$ PSI)	1/2" X 5" HILTI KWIK HUS-EZ SCREW ANCHOR	4"	8"	4 1/4"
		CONCRETE ($f'_c \geq 4000$ PSI)	3/8" X 4" HILTI KWIK HUS-EZ SCREW ANCHOR	2 1/4"	12"	3 1/4"
		STEEL (MIN 3/16" THICK, $F_y \geq 36$ KSI)	3/8" X 1" SELF TAPPING SCREW*	3/4"	12"	3/16"
	TOP & BOTTOM	GROUT-FILLED CMU ($f'_m \geq 1500$ PSI)	1/2" THROUGH-BOLT W/ NUT & FLAT WASHER	3 3/8"	8"	FULL
		CONCRETE ($f'_c \geq 4000$ PSI)	5/8" X 4" HILTI KWIK HUS-EZ SCREW ANCHOR	2 1/4"	7"	3 1/4"
		STEEL (MIN 3/16" THICK, $F_y \geq 36$ KSI)	3/8" X 1" SELF TAPPING SCREW*	3/4"	8"	3/16"

*NOTE: IT IS ACCEPTABLE TO SUBSTITUTE 3/8-16 BOLTS, NUTS, AND FLAT WASHERS INSTEAD OF 3/8" SELF-TAPPING SCREWS.

I:\Engineering Library\ECN-EIN\2018\ECN 18-0054 - Revise XAV-545 Installation Drawings\

D	ECN 18-0054	9/21/2018	LGH / NWW
C	REVISED STATIC PRESSURE TABLE	4/4/2018	JG
B	ECN 18-0011	3/01/2018	LGH
A	INITIAL RELEASE - ECN 17-0100	01/26/2018	LGH
REV. NO.	DESCRIPTION	DATE	DRAWN BY

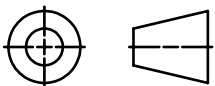
UNLESS OTHERWISE SPECIFIED DIMENSION ARE IN INCHES.

TOLERANCE UNLESS NOTED:
 X.X ±0.060
 X.XX ±0.030
 X.XXX ±0.010
 ANGLE ±1°
 FRACTION ±1/16

MAX HOLE BREAKOUT:
 15% OF MATERIAL THICKNESS

5101 Blue Mound Road
 Fort Worth, Texas 76106
 Phone: 817-509-2300
 Fax: 817-831-3110

THIRD ANGLE PROJECTION



ALL-LITE

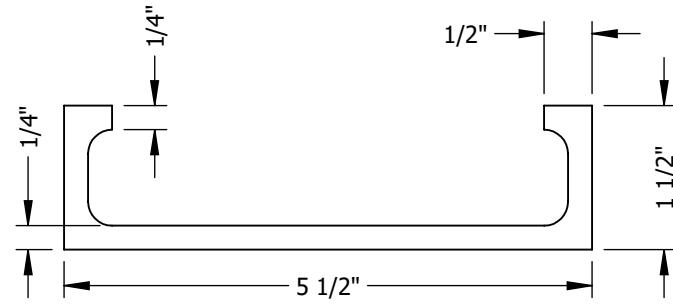
ARCHITECTURAL PRODUCTS

THIS DRAWING AND THE DESIGN REPRESENTED ARE THE CONFIDENTIAL AND PROPRIETARY PROPERTY OF PCI INDUSTRIES AND MAY NOT BE DISCLOSED, LOANED, COPIED, OR USED FOR ANY PURPOSE OTHER THAN DESIGN REVIEW AND APPROVAL WITHOUT THE EXPRESS WRITTEN CONSENT OF PCI INDUSTRIES.

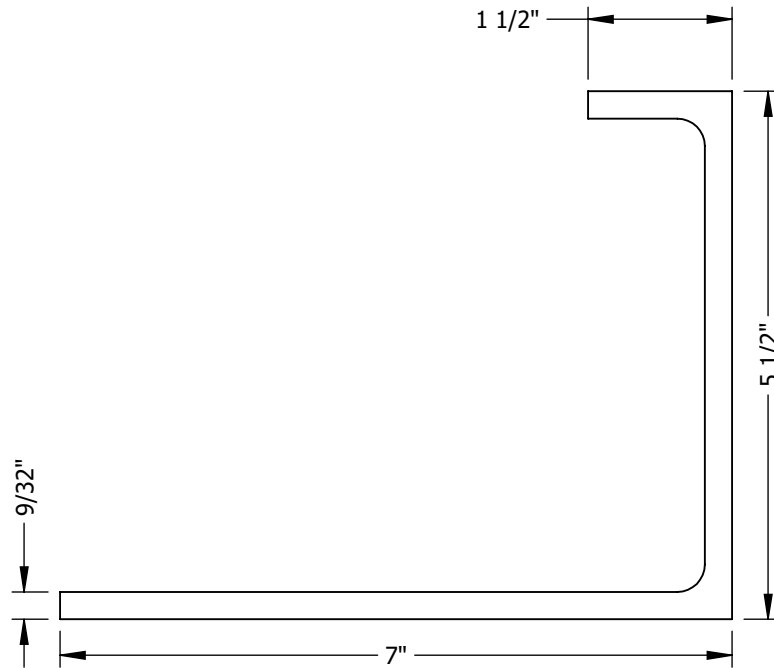
DRAWING DESCR: ANCHOR REQUIREMENTS				
PROJECT: XAV-545 FEMA 361/320 GRILLE ASSEMBLY & INSTALLATION DETAILS				
LOCATION:				
CUSTOMER:				
PROJ. MGR: NATHAN WOODWORTH		DRAWN BY: LGH		
DATE: 12/14/2017	CHK'D BY: JG/nww	ORDER NUMBER	P.O. NUMBER	DRAWING NUMBER
SHEET: 15 of 17	SCALE: NONE			M-60133 D-11

I:\Engineering Library\ECN-EIN\2018\ECN 18-0054 - Revise XAV-545 Installation Drawings\

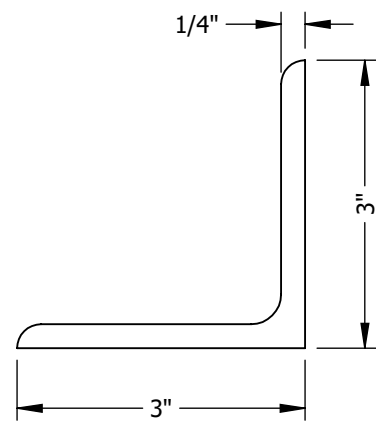
DESCRIPTION: NON-FLANGED FRAME EXTRUSION
 MATERIAL: 6005A-T61 ALUMINUM $\triangle D$
 ALL-LITE PART NO: M-59976
 SCALE: 6" = 1'-0"



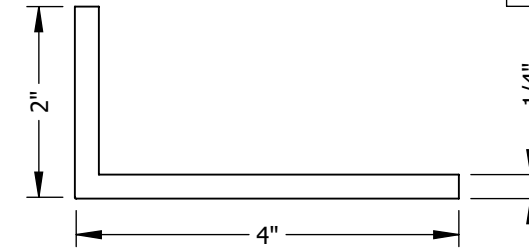
DESCRIPTION: FLANGED FRAME EXTRUSION
 MATERIAL: 6005A-T61 ALUMINUM $\triangle D$
 ALL-LITE PART NO: M-59977
 SCALE: 6" = 1'-0"



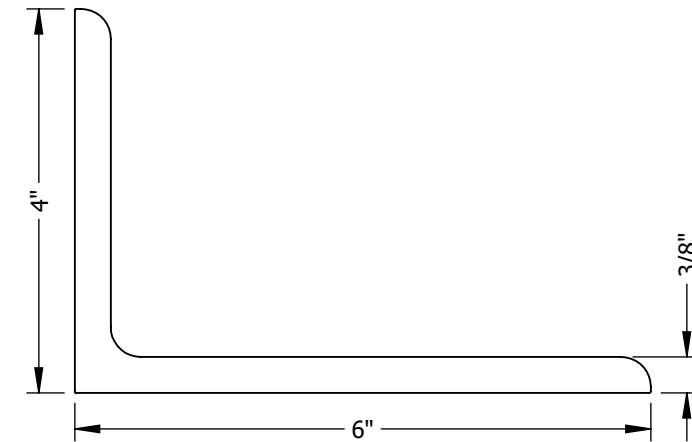
DESCRIPTION: 3" X 3" X 1/4" ANGLE BLADE
 MATERIAL: 6005A-T61 ALUMINUM $\triangle D$
 ALL-LITE PART NO: M-54433
 SCALE: 6" = 1'-0"



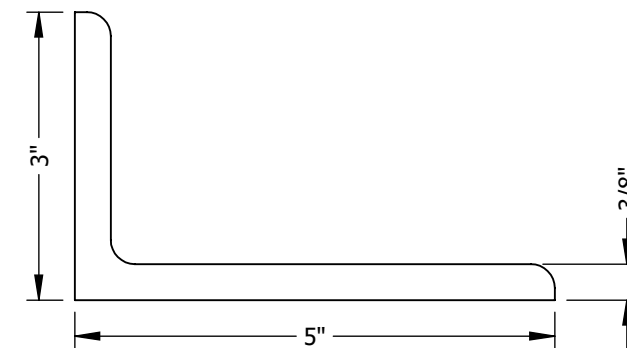
DESCRIPTION: 2" X 4" X 1/4" ANGLE
 MATERIAL: 6063-T5 ALUMINUM
 ALL-LITE PART NO: M-12937
 SCALE: 6" = 1'-0"



DESCRIPTION: 4" X 6" X 3/8" ANGLE
 MATERIAL: 6061-T6 ALUMINUM
 ALL-LITE PART NO: M-12863
 SCALE: 6" = 1'-0"



DESCRIPTION: 3" X 5" X 3/8" ANGLE
 MATERIAL: 6061-T6 ALUMINUM
 ALL-LITE PART NO: M-50498
 SCALE: 6" = 1'-0"



EXTRUDED PART DETAILS

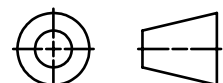
UNLESS OTHERWISE SPECIFIED DIMENSION ARE IN INCHES.

TOLERANCE UNLESS NOTED:
 X.X ±0.060
 X.XX ±0.030
 X.XXX ±0.010
 ANGLE ±1°
 FRACTION ±1/16

MAX HOLE BREAKOUT:
 15% OF MATERIAL THICKNESS

5101 Blue Mound Road
 Fort Worth, Texas 76106
 Phone: 817-509-2300
 Fax: 817-831-3110

THIRD ANGLE PROJECTION



ALL-LITE
ARCHITECTURAL PRODUCTS

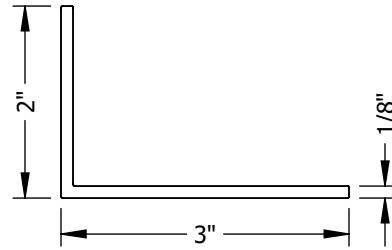
THIS DRAWING AND THE DESIGN REPRESENTED ARE THE CONFIDENTIAL AND PROPRIETARY PROPERTY OF PCI INDUSTRIES AND MAY NOT BE DISCLOSED, LOANED, COPIED, OR USED FOR ANY PURPOSE OTHER THAN DESIGN REVIEW AND APPROVAL WITHOUT THE EXPRESS WRITTEN CONSENT OF PCI INDUSTRIES.

DRAWING DESCR: EXTRUDED PART DETAILS				
PROJECT: XAV-545 FEMA 361/320 GRILLE ASSEMBLY & INSTALLATION DETAILS				
LOCATION:				
CUSTOMER:				
PROJ. MGR: NATHAN WOODWORTH		DRAWN BY: LGH		
DATE: 12/14/2017	CHK'D BY: JG/nww	ORDER NUMBER	P.O. NUMBER	DRAWING NUMBER
SHEET: 16 of 17	SCALE: AS NOTED			M-60133 D-12

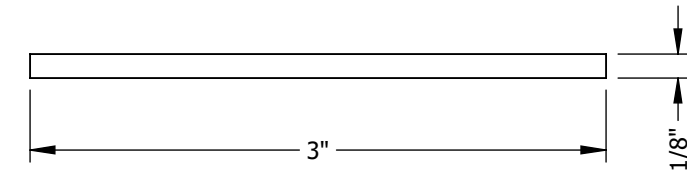
REV. NO.	DESCRIPTION	DATE	DRAWN BY
D	ECN 18-0054	9/21/2018	LGH / NWW
C	REVISED STATIC PRESSURE TABLE	4/4/2018	JG
B	ECN 18-0011	3/01/2018	LGH
A	INITIAL RELEASE - ECN 17-0100	01/26/2018	LGH

**EXTRUDED PART
DETAILS**

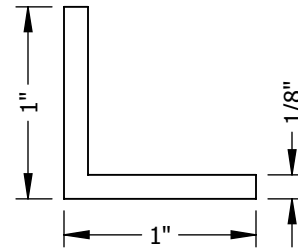
DESCRIPTION: 2" X 3" X 1/8" ANGLE
 MATERIAL: 6063-T5 ALUMINUM
 ALL-LITE PART NO: M-50678
 SCALE: 6" = 1'-0"



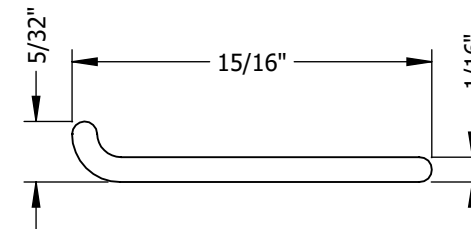
DESCRIPTION: 3" X 1/8" BAR
 MATERIAL: 6063-T52 ALUMINUM
 ALL-LITE PART NO: M-50617
 SCALE: 1" = 1"



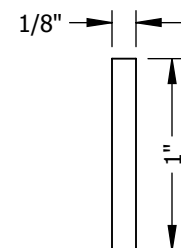
DESCRIPTION: 1" X 1" X 1/8" ANGLE
 MATERIAL: 6063-T52 ALUMINUM
 ALL-LITE PART NO: M-50390
 SCALE: 1" = 1"



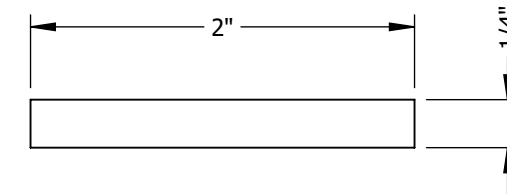
DESCRIPTION: 1" SCREEN FRAME
 MATERIAL: 6063-T5 ALUMINUM
 ALL-LITE PART NO: M-12966
 SCALE: 2" = 1"



DESCRIPTION: 1" X 1/8" BAR
 MATERIAL: 6061-T6 ALUMINUM
 ALL-LITE PART NO: M-54977
 SCALE: 1" = 1"



DESCRIPTION: 2" X 1/4" BLADE STIFFENER $\triangle D$
 MATERIAL: 6063-T5 ALUMINUM
 ALL-LITE PART NO: M-54516
 SCALE: 1" = 1"



I:\Engineering Library\ECN-EIN\2018\ECN 18-0054 - Revise XAV-545 Installation Drawings\

D	ECN 18-0054	9/21/2018	LGH / NWW
C	REVISED STATIC PRESSURE TABLE	4/4/2018	JG
B	ECN 18-0011	3/01/2018	LGH
A	INITIAL RELEASE - ECN 17-0100	01/26/2018	LGH
REV. NO.	DESCRIPTION	DATE	DRAWN BY

UNLESS OTHERWISE SPECIFIED
 DIMENSION ARE IN INCHES.

TOLERANCE UNLESS NOTED:
 X.X ±0.060
 X.XX ±0.030
 X.XXX ±0.010
 ANGLE ±1°
 FRACTION ±1/16

MAX HOLE BREAKOUT:
 15% OF MATERIAL THICKNESS

5101 Blue Mound Road
 Fort Worth, Texas 76106
 Phone: 817-509-2300
 Fax: 817-831-3110

THIRD ANGLE PROJECTION

ALL-LITE
ARCHITECTURAL PRODUCTS

THIS DRAWING AND THE DESIGN REPRESENTED ARE THE CONFIDENTIAL AND PROPRIETARY PROPERTY OF PCI INDUSTRIES AND MAY NOT BE DISCLOSED, LOANED, COPIED, OR USED FOR ANY PURPOSE OTHER THAN DESIGN REVIEW AND APPROVAL WITHOUT THE EXPRESS WRITTEN CONSENT OF PCI INDUSTRIES.

DRAWING DESCR: EXTRUDED PART DETAILS				
PROJECT: XAV-545 FEMA 361/320 GRILLE ASSEMBLY & INSTALLATION DETAILS				
LOCATION:				
CUSTOMER:				
PROJ. MGR: NATHAN WOODWORTH		DRAWN BY: LGH		
DATE: 12/14/2017	CHK'D BY: JG/nww	ORDER NUMBER	P.O. NUMBER	DRAWING NUMBER
SHEET: 17 of 17	SCALE: AS NOTED			M-60133 D-13